

Waseda University New LMS



First Steps

Improving the Learning and
Teaching Experience

Anything you could do before, you can still do now! /

Course N@vi ▶ Waseda Moodle Comparison



Sharing/ Publishing Data

Documentation



URL



File



Page



Label

On-demand
Content



CCS (Contents Creation Studio)



URL



Media (millvi)

Trial Tester Comments

I was able to post a lot of documents at once using drag & drop!

(School of Fundamental Science and Engineering)

Communication

Announcements



Announcement

Mailbox mail



Message My teacher

Questionnaire



Questionnaire

Discussion



Forum

NEW



Workshop

Trial Tester Comments

The surveys were visually easy to see and students had an easy time answering them!

(School of Education)

Verifying Student Progress

Review Sheet



Quiz



Assignment

Quiz



Quiz

Reporting



Assignment

Trial Tester Comments

The Question bank lets me use the same problems across different courses!

(School of Fundamental Science and Engineering)

Student Management

Attendance



Attendance

Managing Grades



Grades

Group Management



Groups

Trial Tester Comments

The new system let me grade using decimals, and changing score weights was easy!

(School of Advanced Science and Engineering)



“Waseda Moodle” is the name of the new *Learning Management System (LMS)* which will be replacing Waseda-net Course N@vi, Waseda University’s LMS since 2007. It is based on “Moodle”, an open-source platform used world-wide in over 230 countries with over 70 million users. The transition to Waseda Moodle will allow our university to continue to adapt to new advances in information technology and changes to educational paradigms.

What is Moodle?

Moodle is short for “**M**odular **O**bject-Oriented **D**ynamic **L**earning **E**nvironment”. First developed in Australia, it continues to be improved by programmers and users within the Moodle community around the world. New releases are published biannually, and various examples of usage are available online.

Why Waseda Moodle?

Multi-Device Compatibility



With multi-device compatibility, students and faculty members can access Waseda Moodle from anywhere, anytime using any smart device including personal computers, tablets or even smartphones.

Multilingual User Interface



Various language options are available for non-Japanese speakers. Switch between Japanese, English or any of the 9 other language settings.

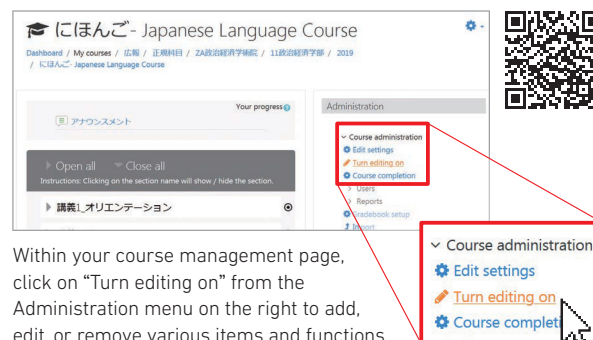
Enhanced Usability



The user interface is intuitive and easy to understand, which allows users to rearrange or show/hide content with ease and speed.

Click on “Turn editing on” to Add, Edit, or Remove Functions!

See website for more information



Within your course management page, click on “Turn editing on” from the Administration menu on the right to add, edit, or remove various items and functions.

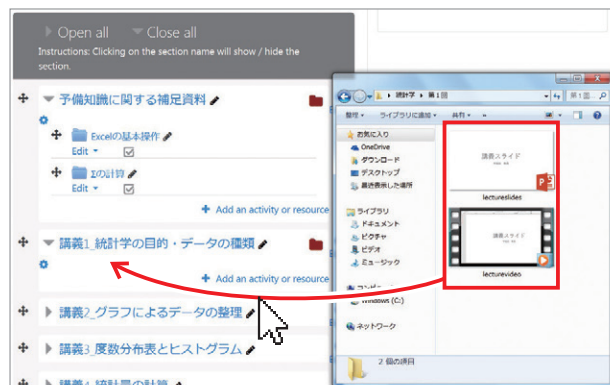
4 Functions Worth a Try

1

File

Easier File Transfers

The *File* module lets you post lecture slides, supplementary materials, and more.

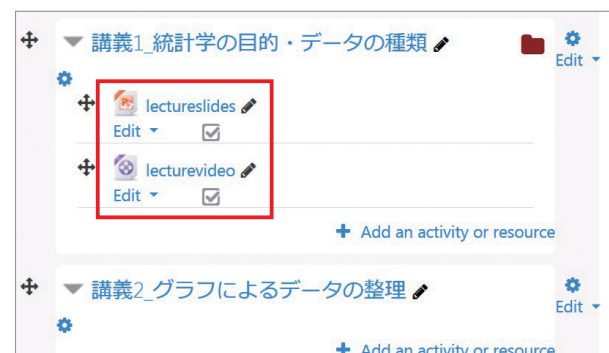


Arrange your windows so you can access the console, then simply drag and drop your files to upload to the appropriate course folder. No additional steps required!

Trial Tester Comments
I thought the transition would take time, but transferring the files was easy!
(School of Commerce)



See website for more information



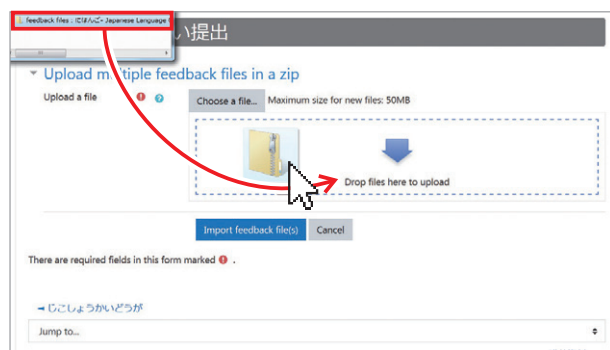
Once the data has been uploaded, click on "Edit" to replace, show or hide files.

2

Assignment

Quick and Easy Feedback

Uploading feedback is no longer time-consuming.

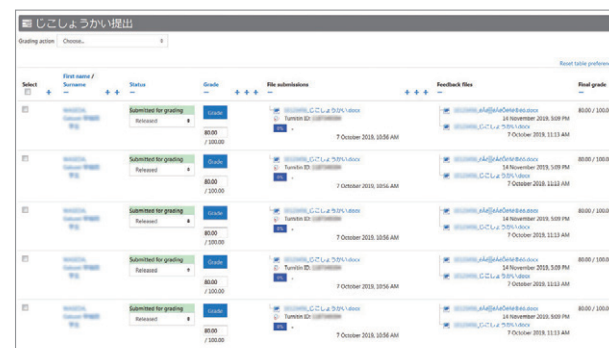


Select "Upload multiple feedback files in a zip" to send feedback files to all students at once, rather than uploading each file individually.

Trial Tester Comments
Being able to return proofread/scored Word or PDF files to individual students all at once is convenient!
(Global Education Center)



See website for more information



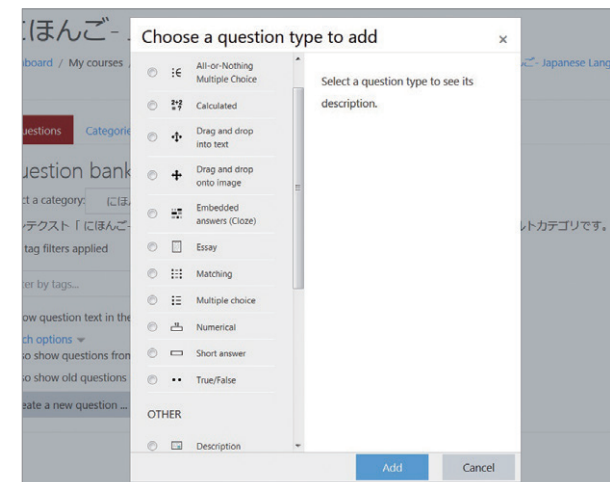
Students can use the detailed feedback to improve their academic performance.

3

Quiz

Diverse Quiz Designs

The *Quiz* module provides many options for creating the "perfect" quiz.

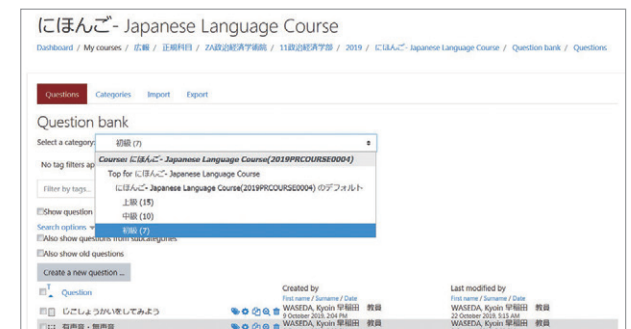


Instructors can choose from numerous question types including multiple choice, true or false, short answer etc., as well as various settings such as deadlines or trial limits.

Trial Tester Comments
I have more options now, including various question types and the ability to shuffle the orders around!
(School of Fundamental Science and Engineering)



See website for more information



Questions can be saved in the Question bank by category. They can be copied and used across different courses.

4

Forum

Enhanced Student Engagement

Instructors and students can communicate with each other using the *Forum*.

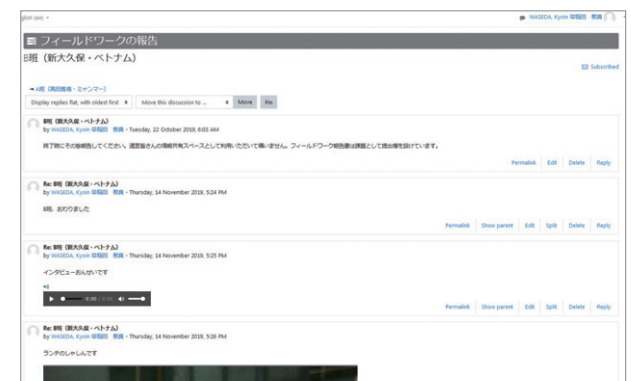


The forums facilitate discussions between students and/or instructors as well as the sharing of data and information.

Trial Tester Comments
Group work was more efficient with the forums!
(School of Political Science and Economics)



See website for more information



To all Faculty Members

Regarding Preparations for the 2020 Implementation of the New LMS

The process of implementing Waseda Moodle will begin late November 2019, and will be open for use by the *2020 academic year*.

Please make sure that any tasks required to transition your courses from Course N@vi to Waseda Moodle are completed by *April 2020*.

Please provide the following contact information to any students with inquiries regarding Waseda Moodle.

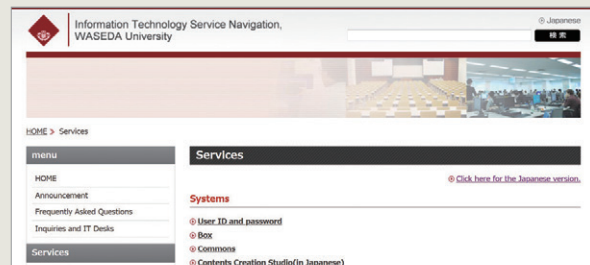
*New students beginning April 2020 will be taking their New Student Start-up courses via Waseda Moodle. *Course N@vi will be operational until March 2021.

Please make use of the "Useful Content for Faculty and Staff" course and materials.
(You can copy and paste the sample content to help create quizzes, etc.)

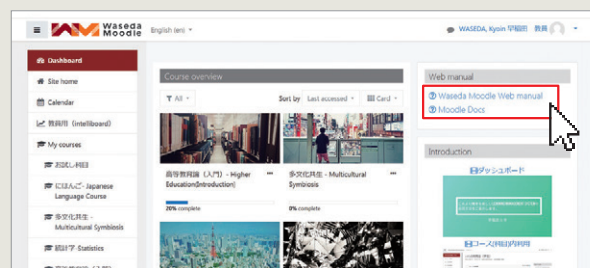
Please feel free to ask us any questions

1. Please see the Waseda Moodle page linked from the IT Service Navigation page.

<http://www.waseda.jp/navi/wsdmoodle/>



2. Moodle Docs (English) and the Instructor Manual can be accessed from the link at the top right corner of your dashboard.



3. Inquiries: Please see contact info (email, phone) at the following link.

*Please direct inquiries to the branch office located at your campus.

<http://www.waseda.jp/navi/inquiry.html>

