



# WISH TIMES

*Ending is Beginning*

Version 47  
January 2022

Winds of Change

This time, I finally realized "the second year was here".

The history of Nakano: The Nakano Elephant

Dorm Graduation ~Farewell WISH~

# Contents

2	Winds of Change
5	This time, I finally realized “the second year was here”.
10	The history of Nakano: The Nakano Elephant
12	Dorm Graduation ∼Farewell WISH∼



Writer: Chrisanne  
Translator: Moeka  
Designer: Honami

# WINDS OF CHANGE



Wind is the quintessence of change. It makes you realize where and when you are. Whenever your perception of the wind changes, that means you are experiencing change. In the spring and summer, the wind feels refreshing and subtle. It makes the leaves rustle softly; making the sunbeams dance in the shade. During the past few months, the northwesterly cold wind blew the leaves from the trees, forming a crunchy layer on top of the earth. The wind put on layers of thick clothing on people and tucked animals into a deep sleep. Like the winds, the students of WISH faced changes every single day. One of the biggest changes many dormitory students will face in the coming months is the change of a new living environment. Here, we talked with four dormitory students who will be leaving WISH about their engagement with the concept of change.



Reka

now

“Although first, I thought last new year would be pretty lonely because I can't spend it with my family and most of my Japanese dormmates go home, it turned out to be my dearest memory in WISH.

With the Japanese dormitory students who didn't go home and other international students from the 11th floor, we decided to do our own "oshogatsu" in WISH. While being careful of infectious diseases, we cooked soba, bought tempura and kirimochi, and watched Kohaku during the whole night. The stronger members even stayed up until morning to see the first sun of the New Year but it was not something for an early bird (others say granny) like me.

I think I'll never forget counting down until midnight with all these lovely people who changed my life in WISH. Without them, my life in WISH wouldn't have been even half as fun as it was!”



Rina

now

“Growing up, I enjoyed meeting new people and being surrounded by my friends. However, maintaining my personal space was something I've always valued as well. Hence, the thought of moving to WISH was nerve-wracking. Since my move-in day was delayed for 6 months due to the pandemic, I decided to make the most out of my time with my friends in WISH. When we first got here, we were like children who had never been out for a long time: we went on day trips, had movie nights, had late-night talks, cooked for each other, et cetera. I think we barely slept because we just wanted to make the most out of it. I know it sounds cheesy, but we even made a list of what we wanted to do while in WISH. We did accomplish quite a lot of it! As time passes, you become closer, but at the same time, you also learn to respect each other's spaces. Sometimes we would sit in the same room in silence, but it's not awkward. We are like family in a way. I'm confident to say that I made lifelong friends at WISH. Although I am sad that we'll no longer be living together anymore, I'm also super excited to move on to the next chapter of our lives together. It'll be weird having to decide where to meet when we hang out, but there are so many things I am looking forward to after moving out. I am so grateful for all the memories I had here in WISH! Thank you everyone!”





EK

now

“I think my favorite memory about change at WISH is when my friends and I had a Christmas party in the living room. It was about three months since I moved into WISH; my first time away from home. We made lots of food and snacks and watched a movie using my friend’s projector. The atmosphere was so warm and welcoming and it was the first time I felt at home at WISH.”



Tharit

now


“Entering into a country I have never been to before while lacking the ability to convey my feelings and perspective to the locals was a fearful welcoming gift. Yet the friends I have made during my time in WISH were the cure for the petrifying problems of being in a new environment. I was able to experience growth, hatred, love, affection, and much more. Such an experience was similar to having a “family” and they helped me through all of the rough and smooth paths that I have faced and will face later on. Although I had to adapt to the new changes of being in a new environment, the WISH community had helped me feel at home.”



*Let's look towards  
a bright future*

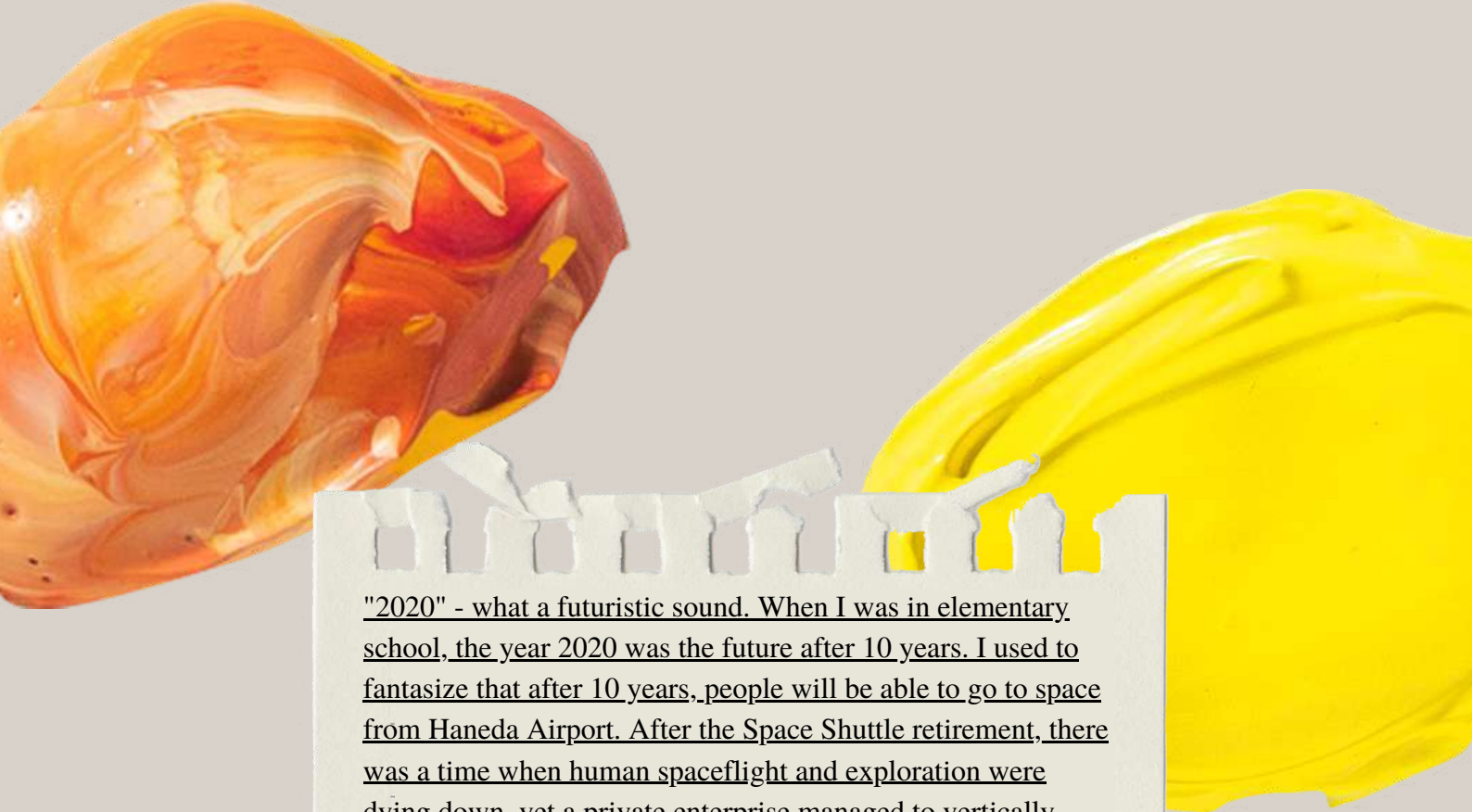


Writer: Daichi  
Translator: Haruki  
Designer: Miho



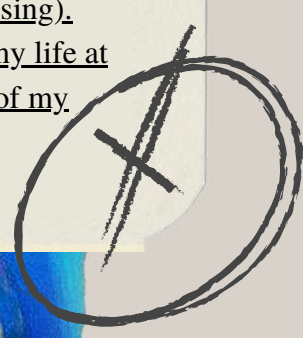
This time, I finally realized  
“the second year was here”.





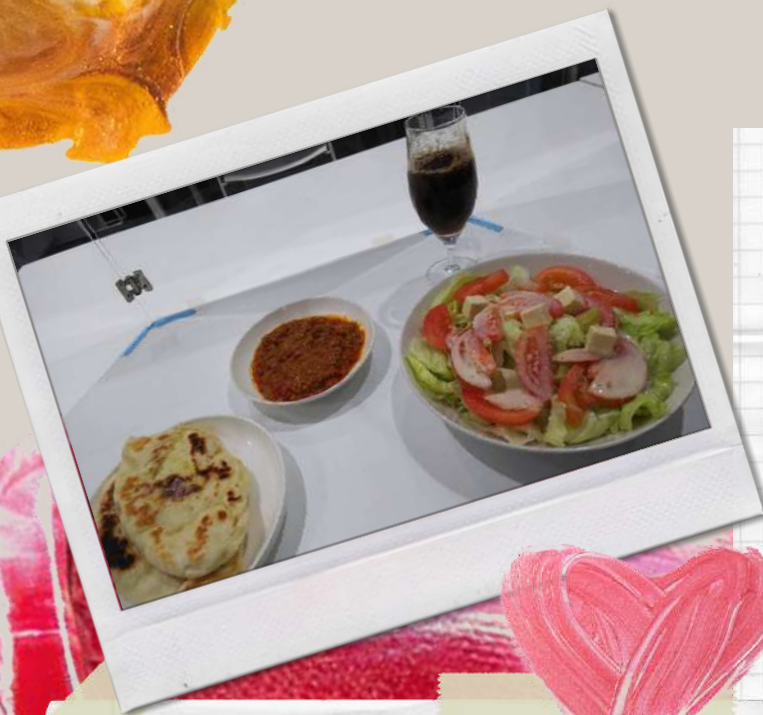
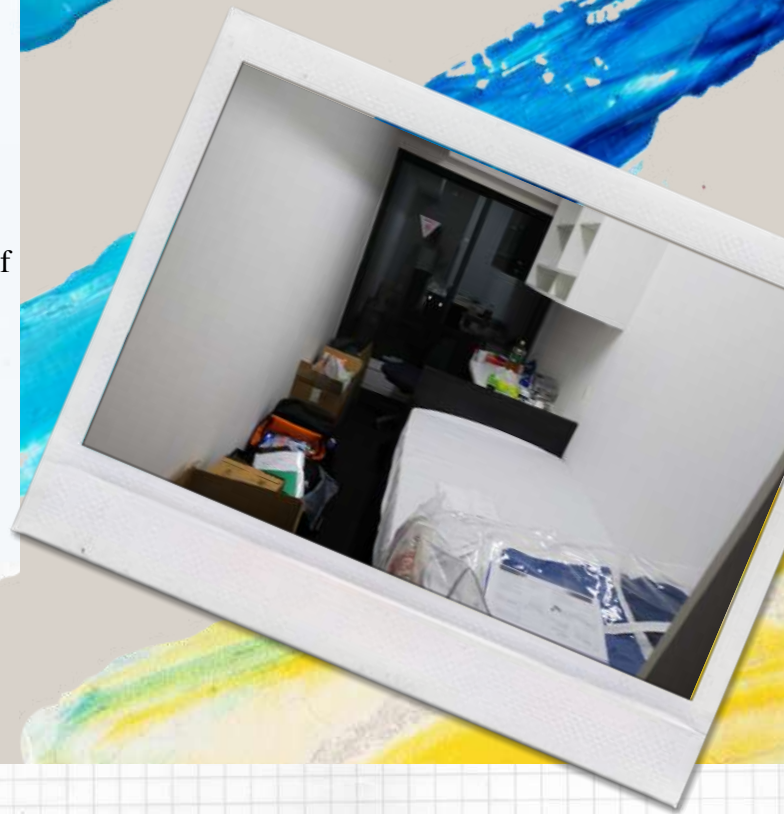
"2020" - what a futuristic sound. When I was in elementary school, the year 2020 was the future after 10 years. I used to fantasize that after 10 years, people will be able to go to space from Haneda Airport. After the Space Shuttle retirement, there was a time when human spaceflight and exploration were dying down, yet a private enterprise managed to vertically land a rocket and the moon exploration program restarted; they did not fail to fill me with eager anticipation. As the 2020 Tokyo Olympics awaits, the world of Sci-Fi seems to be forthcoming.

The first year of the 2020's, what has covered the world with turmoil, terror and masks was Covid-19. When I finished my exams in late February, what drew the most attention from the society is Covid-19. Luckily, the graduation ceremony for my high school was able to be held, the participants were only the third-year students and their parents. There was no room for an event such that Kohai would ask us to give them the button of my jacket! (There is a tradition in Japan where students ask whoever they love for the buttons of their jackets) Until May, when the classes begin, I dedicated my life to returning my loans to Tom Nook in a desert island (Animal Crossing). When I realized, it is already 2022 and the end of my life at WISH is coming up close. Let me reflect on some of my memories now.





【1】 Entering the dorm a half year later  
Even though the initial expected month for entering WISH was April, it was extended to September in the end. I was impatiently waiting to enter the dorm, and when I opened the door of the unit room, it was full of souvenirs; plastic bags full of clothes to be washed, armour for American football, rice cooker, photo albums from twenty years ago... and more. I ended up spending the rest of my summer holiday putting them away. Now that I remember, they were fulfilling days.



【2】 Figuring out how to cook  
I am facing the difficulties; 19 years of compensation for leaving it up to my parents. Merely making the food is not everything about cooking. I have to buy and prepare all the ingredients. Actually, this might be harder. Meats can be frozen in the freezer, but vegetables spoil quickly. Thus, I decided to use the leftover vegetables for Japanese pickles as ~~I wanted to keep the expenses~~. I was inspired by the sublime philosophy of SDGs. I highly recommend it because it is very good albeit it is hard to take care of it.

【3】 A sudden room change  
It is not that I did something that makes people talk behind my back. The seventh floor I was living in will turn into a girl's floor next year, therefore, the seventh-floor residents back then had to move to their new rooms. It was nice and refreshing to change my room, though that made me update my residence card, my number card, driver licence, student ID and bank account information twice in half a year.





#### 【4】 Writing in WISH Times

This is my fifth time writing an article in WISH Times. Once I went for an interview at Nakano Broadway, and on another occasion, I wrote an article introducing the rooms of the residents. We can talk about my skills later, but I liked writing so I am very pleased to have this kind of opportunity. Not only writing, having a meeting at the park while having breakfast was memorable as well. Thus, it is sad that this is my last chance to write an article in WISH Times.



#### 【5】 With my roommate

The majority of my life at the dorm is dominated by memories with my roommates. It might have been significant that all three of us are in the same grade. We played board games every night and when the public bath was not available, we went to Sento. During the season of final exams, we brought our faces up close and studied together in the living room. During long holidays, we went out many times together. It became a great start of my university life because of living in WISH after the Covid-19 crisis.





As I look back at my life at the dorm, it sounds truly clichéd when I write it out with words. However, without exaggeration, isn't this "cliché" what really is precious during Covid-19 crisis? Going back to the story at the start, 2020's that I, as an elementary school student, imagined are approaching steadily, nonetheless, it has not arrived yet. Only the astronauts and billionaires have the chance to be in the universe. However, it is aggravating to just look enviously at them. I want to be actively involved in the development of spaceships. By the end of my grandchildren's generation, at least I want to make space travel common. I have made friends with whom I can share such dreams without embarrassment thanks to WISH. Due to the Covid-19, perhaps I was not able to taste and fully experience the fascinations of WISH. Nevertheless, I believe we have the advantage of living in WISH at such a time. Needless to say, I hope that the freshman and new students who will be entering the dorm will thoroughly enjoy WISH on behalf of current sophomores.



Lastly, I want to express my deepest gratitude to WISH for allowing me to enter the dorm when my house is five minutes away from the dorm with a bike. Why I was able to enter the dorm is a question that I find most miraculous.



# The history of Nakano

## The Nakano Elephant



city-tokyo-nakano.jp

Writer: Yui  
Designer: Shiki  
Translator: Yui

“I believe that the history of the town is a treasure that should be shared”, said Ms.Nakamura who has been working in the educational puppet industry, and making pamphlets about the history of Nakano for kids. In this article, I will introduce the history of elephants in Nakano that Ms.Nakamura told me about.

2021 December 12th, 4PM.

People of different ages from all over the Tokyo area gathered in エカイエ to learn about the history of the Nakano elephant. I was the youngest one out of all of the participants, so I was indeed quite nervous. We started off by reading the script of the history of elephants made by Ms.Nakamura and her theater friends and the story goes like this...

Back in the Edo period, when Tokugawa Yoshimune, the 8th Shogun was in power, the Qing Dynasty sent out a letter to Yoshimune asking if he wanted an elephant.

The debate about whether to accept the offer or not heated up between the shogun's council of elders because taking care of the elephant is costly. Yoshimune, thinking that the elephant will be white, gladly accepted the offer, since white elephants were said to bring in good fortune.



徳川吉宗 - Wikipedia

At the end, two elephants, male and female each, were brought from Annam, now known as Vietnam, to Nagasaki. Sadly, the female elephant lost her life shortly after arriving, but the male elephant made it all the way to Edo walking for two months. He was offered to Yoshimune and was kept in Hama-Gozen.

The situation changed drastically when the Kyoho Famine happened. Luxury was prohibited, and along with the reduction of spending, the elephant was off the Bakufu's hand.

Gensuke, the elephant caretaker who lived in Nakano, agreed to look after the elephant in exchange for subsidies. He started an elephant tent show business and sold elephant feces as medicine. Unfortunately, his business started to go downhill; the popularity of the elephant fell, and the subsidies were cut off.

On December 11th, 1742, the elephant passed away. It is said his tusk is being kept in Hosen-ji.

What used to be a tent show is now a park, located near Nakano Sakaue station. There is a little signboard with a brief description of the history.

Ms. Nakamura and several others were professionals who read the script aloud because they played a puppet show. I didn't like reading aloud homework, so I tried my best to read it aloud without making any mistakes, but I had a good time.

After reading the script, we took an elephant exam and got an elephant badge.

The next edition will be about the history of Tetugaku park, so don't miss it out!





# DORM GRADUATION ~FAREWELL WISH~

Writer: Yukie  
Translator: Hanna  
Designer: Rika



FAREWELL WISH

The column series "RA & Resident's Life." This time, I interviewed 2 RAs who are graduating this spring.

So, did you enjoy last volume's Residents' Life "My Local Colorful Season"? With the help of many residents, I was able to introduce autumn sceneries from the north to the south of Japan that make our hearts overflow. As you can see, residents from all over Japan and the world have come and live together. Four years ago, I was one of the students who moved to Tokyo after living in my hometown for eighteen years. The international interaction with fellows at WISH was very inspiring for me who only knew about the small world and it was an experience that made me grow. From the second year, I had an exchange program to the United States and I was living in the dorm there. However, I thought WISH is the only place where we could learn to encounter people who would help us in the future from the events and SI. That is why I decided to return to WISH as an RA after coming back to Japan. Just like me, there are many RAs who used to be residents and came back at WISH as a supporter. Out of those people, I interviewed two RAs who will graduate WISH this spring. They have led the other RAs while there were many difficulties due to the Covid-19 crisis, such as fewer students from overseas and events being canceled. I asked them about their ambitious thoughts about WISH and RA. Please enjoy!

# 11TH FLOOR RA: SHIONE

- Self-Introduction

I am Shione, a fourth-year in law! Since my hometown is Shizuoka, I enjoyed gazing at the view of Mount Fuji from WISH. The four years that I spent at WISH are irreplaceable memories.

- Why did you decide to become an RA?

It is because I thought, “We should utilize WISH more.” Here at WISH, there are residents that come from various backgrounds. Personally, thanks to the SI programs, events, and study trips, I was able to communicate with other residents and broaden my perspective and thinking. This time, as an RA who stands in the position of organizing the SI Programs and events, I wanted to give back to the residents by using my own experience.

- Do you have any memories at WISH?

It is during the summer of 2019 when I went to Hokkaido for a domestic research study trip for two weeks. The farmers in Hokkaido took great care of us, and we learned about beekeeping, farming, and tomato cultivation. It was my first time at Hokkaido, and I was moved by the magnificent nature. Since I was able to understand the heart of the producers that “want to deliver good product”, it was a precious experience. I was able to participate in many research study trips, and they were all very insightful! Please be proactive and participate in these research study trips!

- Do you have a personal way of enjoying Nakano?

I recommend stopping by any shop that you’re interested in while walking. If you walk around Nakano station, there are many underrated shops you can find! On a day when I have free time, I go on a trip where I ride the bus and get off at various stops along the way. It feels like a mini-vacation :)

- In what area do you feel the rewarding aspects of being an RA?

Being able to plan and organize the events and SI Programs. The moment we can come together with the same desire of “I wish we can have this kind of event,” and see the event planning unfold is extremely fun. There are times when residents express words such as “It was fun,” “I want to attend again,” and from the bottom of my heart

I feel glad that I am able to become an RA.







- Do you think the experiences that you gained in WISH/from being an RA is connected with your journey beyond graduation?

After graduation, I will work at a TV company. As an RA of WISH, the experiences that “we were able to create something better as a team” is definitely connected to my current path. I have had the opportunity to spectate several TV sites, and I felt like the attitude of working together as a team to provide better content connected to my experiences of being an RA. From now on, I think that my experiences as an RA will be helpful in any situation.

- Lastly, do you have any messages for WISH residents?

Please take with you the experiences, encounters, and lessons that you had at WISH! Your experiences in your day-to-day life are a seed for your growth. The university experience seems long yet it goes by so fast. Have the courage to take one step of bravery and challenge yourself to anything!

## 6TH FLOOR RA: KEIIN

- Self-Introduction

I am Keiin, a fourth-year in commerce! After 18 years of living in Hamamatsu City, I enrolled in Waseda University! My hobby is traveling and during my university years I traveled all around more than 20 countries! Even after graduation, I want to travel as much as I can!

- Why did you decide to become an RA?

I wanted to be someone who can expand the potential of the residents! As I come from a single mother home in the suburban area, I used to limit myself. However, staying at

WISH with students from around the world and Japan helped to expand my horizons, as well as provide more options for my future plans. I think there are various type of RA, but I would like to open up the possibilities of dormitory students by encouraging communication between dormitory students on a daily basis.





- **Do you have any memories at WISH?**

When I was a resident, I have memories of spending time with my fellow 7th-floor friends every day. My roommates at the time were Taiwanese and Mongolian, so it felt like a very international environment with all three of our cultures intertwining. We were very close, but back then I was a new resident I was unable to speak English, so I was able to think, “I have to study!” I feel like this environment had a large impact on how I chose a path of backpacking and long-term study abroad. All of us on the 7th floor was close, so we still play around frequently together! The times where I traveled to Thai, Cambodia, Vietnam, Korea, and Taiwan with my friends from the 7th floor are all wonderful memories!



- Do you have a personal way of enjoying Nakano?

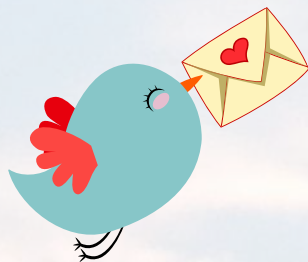
Definitely, restaurant touring! Near the North and South exit of Nakano Station, there are many restaurants that exist. There are quite a lot of delicious and reasonable restaurants so you can go out to eat every day! Contact me if you can't figure out where to eat at Nakano!

- In what area do you feel the rewarding aspects of being an RA?

Being able to spend time every day with extraordinary colleagues and people from various backgrounds is one aspect. This is not limited to only RAs, but I am also impressed daily by the residents I get along with. My life has been very exciting and stimulating since I can see my growth while working on projects as an RA and discussing with other students in the same environment.

- Do you think that the experiences that you gained in WISH/from being an RA is connected with your journey beyond graduation?

Without a doubt, they are connected! While job hunting with my fellow colleagues Ohashi and Shimada, I remember feeling frustrated since both of them were very clear about the direction for their future career. However, it is thanks to these two that I was able to figure out what I want for my future, what to prioritize at the moment, and in the end, I was able to decide on a path that I am satisfied with. Even if I thank them personally, it is never enough.





Including the many sempai RAs where I received advice, the RAs in the same grade where we talked about our concerns, the reason why I was able to overcome the challenge of job hunting is because of the RA environment. Since RA activities are conducted by each organization as a unit, I was able to have an objective analysis on myself as for finding a suitable role for myself while working for an organization.

- Lastly, do you have any messages for WISH residents?

WISH is your “home, and the people that you spend time with are your “family.” In your university experience, your environment suddenly changes, and you might encounter difficulties and challenges. But the environment that will support you throughout your everyday life is WISH. Now that you have gained an incredible environment like WISH, let's find an amazing group of people as well. A university experience that no one can beat you in is about to begin.

Thank you both so much for your time while you are busy. I have known Shione since we were both residents on the 11th floor, and even as an RA she was someone who naturally attracts others through her kindness. As for Keiin, we became RAs around the same time, and he was someone who constantly raised the morale for the RAs. Through our first interview, I feel like I've gotten closer to them already. WISH is overflowing with friends like these! It is my sincere wish that you spend a meaningful university life while at WISH by treasuring every experience here at WISH.



THANK YOU!!

# Contributions

## Writers



**Chrisanne**



**Daichi**

## Translators



**Haruki**



**Hanna**

## Designers



**Rika**



**Shiki**



**Honami**

## RA Supporters



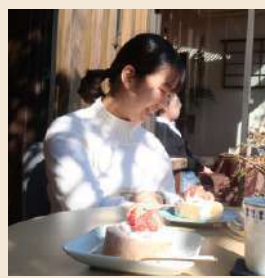
**Moeka**



**Miho**



**Yukie**



**Ren**



**Yui**