

Waseda that Shines on the World Stage as an International Research University



Request for Contribution to the
Waseda Open Innovation Valley Project

Request for Support Toward the Realization of the Waseda Open Innovation Valley Project



Waseda University has launched initiatives to enhance its **research, education, and social contribution** and take them to world-class levels, with the aim of transforming Waseda into a leading university that “**shines on the world stage.**” As a part of these efforts, the **new Research Innovation Center** was established in FY2020 under the Research Promotion Division. **As an organization that supports research activities, this Center integrates support functions that are related to research strategy, industry-academia-government collaboration, the creation and utilization of intellectual property, and the start-up and acceleration of venture businesses,** with the aim of providing effective support for research activities by faculty, researchers, and students toward the realization of “a Waseda that shines on the world stage.” The support functions of this Center are concentrated in the **new Building No. 121 completed in March 2020** (at a total construction cost of around 10 billion yen; comprising two floors below ground and six above, with a total floor area of approximately 18,000 m²), and includes a one-stop center for research promotion services.

One of the strategies of the Research Innovation Center is the **Waseda Open Innovation Ecosystem**, aimed at putting Waseda University on the same standing as other top universities around the world. This ecosystem leverages on Waseda’s knowledge to **co-create the most prominent and unique technologies in the world in cooperation with its corporate partners,** bring about the **development of industries,** and through that, **contribute to sustainable living that is safe, secure and convenient for people around the world.** At the same time, through the participation of doctoral students and other graduate students who have benefitted from industry-academia collaborative research funds, in these industry-academia collaboration, the ecosystem will nurture **highly skilled and immediately effective human resources who understand social needs.** This co-creation does not result only in **high value-added products.** The technologies created are disseminated across the world in the form of **papers published in top journals and intellectual property (patents, etc.),** and raise the international standing of Waseda University as a research institution. Furthermore, intellectual property produced solely by the university through a derivative process also contributes to the **creation of ventures that fuse the humanities and social sciences with the science and engineering disciplines,** and which are capable of delivering highly original technologies or business models to users around the world immediately. The **capital funds gained through the trust from industries and society,** built up through the **co-creation of high value-added products and services that was in turn made possible by industry-academia collaboration and the development of ventures,** are then used to provide **support for doctoral students and other graduate students, to nurture highly skilled researchers across a wide range of disciplines who can contribute to the world and have an understanding of social needs,** including the SDGs, to **create patents and the publication of papers in top journals worldwide,** and to **support the start-up and acceleration of ventures** based on created patents. By **sustaining this cycle, or “ecosystem,”** over the long-term, I am confident that we will be able to bring about the **evolution of Waseda University to become a university with world-class research capabilities.** If **innovative technologies, business seeds, and business networks** are available to those who come to Waseda, we will be able to attract faculty, students, alumni, venture investors, accelerators, and others across the conventional disciplines of humanities, social sciences, sciences, and engineering, and **build a concentration and network of knowledge and collaboration** while accelerating and sustaining the **ecosystem.** By doing so, we aim to create a “**Waseda Open Innovation Valley**” that expands open innovation initiatives globally in the same way as the Silicon Valley in the United States.

We welcome your **support and participation in our challenge to carve out a new era and contribute to the world through the Waseda Open Innovation Valley project,** and **appreciate your generous support and cooperation** toward this initiative.

President, Waseda University

Aiji Tanaka



Waseda Open Innovation Valley Project

Waseda Open Innovation Ecosystem

Sustaining the cycle of industry-academia collaboration, development of highly intellectual doctoral human resources, creation of intellectual property, and venture creation, to bring about the realization of open innovation

Development of the Waseda Open Innovation Ecosystem

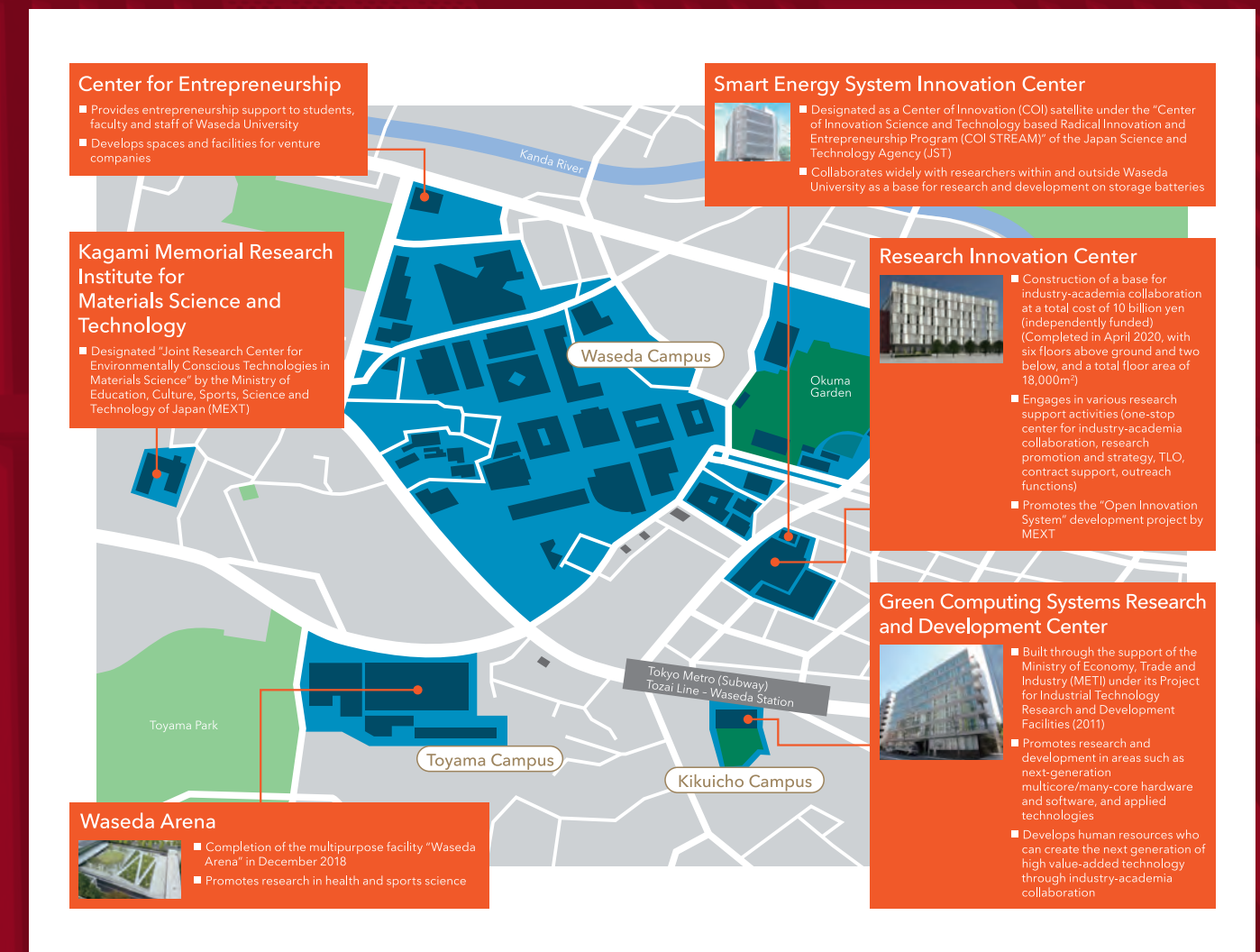
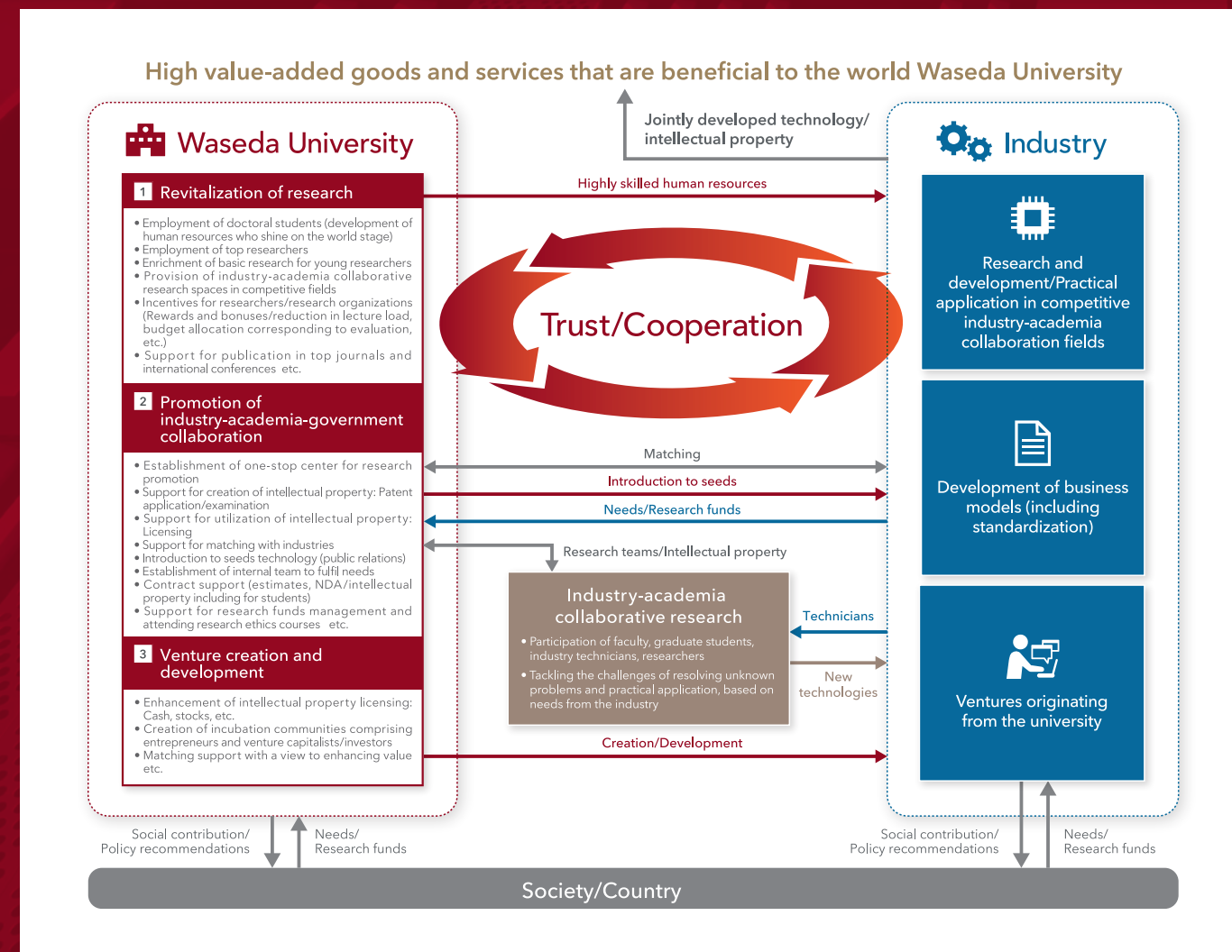
This initiative aims to bring about the realization of a complete ecosystem in industry-academia-government collaborative research. In this ecosystem: ❶ Graduate students, especially those in doctoral courses who represent the next generation, participate actively; ❷ They work in collaboration with industry partners in efforts to address difficult problems that reflect the needs of society; ❸ The results of their research are sent out into the world from the industrial sector as high value-added goods and services, such as "world's only..." or "high performance..."; ❹ A part of the profits is then reinvested in the university to create even more highly skilled human resources and advanced technology; ❺ A part of the intellectual property that is created or derived from that process contributes to the development of ventures originating from the university, and the profits from these ventures are, in turn, invested into next-generation research.

Research Innovation Center

In the Waseda area, open innovation bases are amassed, including industry-academia collaborations, and achieve synergistic effects through networking of the bases with the purpose of creating new "knowledge"

Establishment of research bases centered around the new Research Innovation Center (Building No. 121)

The aim is to develop bases for industry-academia collaboration and technology creation in the Waseda area, similar to Silicon Valley in the United States that is the "holy grail" to IT companies and start-ups, and to build a global open innovation environment centered around research bases such as the new Research Innovation Center (Building No. 121) completed in March 2020, Green Computing Systems Research and Development Center, Smart Energy System Innovation Center, Center for Entrepreneurship, Kagami Memorial Research Institute for Materials Science and Technology, and Waseda Arena.



Newly Established Research Innovation Center

Building No. 121

In March 2020, Waseda University completed constructing the Research Innovation Center (Building No. 121), a new research and development building in the research and development center area of Waseda Campus, in order to establish a research environment and research support capabilities for promoting world-leading collaborative research between industry and academia. (The total construction cost was around 10 billion yen. The building has two floors below ground and six above, with a total floor area of approximately 18,000 m².)

At this research and development building, Waseda University will promote field-type innovative activities that put world-leading collaborative industry-academia research into practice, while also engaging in creating new industries, including venture companies. It will also aim to realize social value creation as the third role of the university alongside education and research.




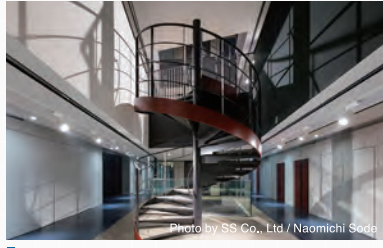
Equipped with the Entrance Innovation Gallery on the first floor and conference facilities on the first basement floor, the Research Innovation Center plays a central role in the realization of the “Waseda Open Innovation Valley Project.”



360° virtual tour inside the research building >



Facilities

Floor	Main facilities and equipment	Overview
B1F	<ul style="list-style-type: none">■ Conference room■ Meeting rooms■ Foyer	<p>With a conference room capable of holding approximately 200 people, eight meeting rooms, and a foyer linked by an atrium to the first floor entrance hall, this is an area suited to handling a variety of activities. In addition, the conference room and some of the meeting rooms are equipped with the latest web conference systems, making it possible to hold domestic and international teleconferences there.</p>  <p>Photo by SS Co., Ltd / Naomichi Sode</p> <p>Conference room</p>
1F	<ul style="list-style-type: none">■ Entrance hall■ Gallery■ Café	<p>The entrance hall has entrances and exits on its west and north sides, and as a result, it draws in flows of people from the Tozai Line of Waseda Station and Waseda Campus. The gallery space is a space for disseminating cutting-edge research content. Thanks to its glass walls, the exhibits on display can be glimpsed from outside the building as well. In addition, there is a café annex (Tully's Coffee – Waseda University Research and Development Center Store) that is established as a continuation of the entrance hall and the gallery, so the area can be visited by a variety of people.</p>  <p>Photo by SS Co., Ltd / Naomichi Sode</p> <p>Gallery</p>
2F	■ Laboratory area	<p>These are dedicated laboratory floors where it is easy to ensure security. Research on projects for proactively promoting industry-government-academia collaboration, including contract and assistance programs for public institutions, and contract and joint research programs with private-sector companies, is carried out in the laboratory area. In addition, communication points and refreshment areas such as lounges are established at points where people's flow intersect. This encourages interaction between researchers and creates spaces for giving the brain a rest.</p>  <p>Photo by SS Co., Ltd / Naomichi Sode</p> <p>Laboratory area</p>  <p>Photo by SS Co., Ltd / Naomichi Sode</p> <p>Lounge</p>
3F	■ Lounge	
4F	■ Meeting space	
5F		
6F		

Contribution guidelines

Contribution period	There is no specific contribution period.
Donors	Corporations/Organizations, alumni, parents, and all other donors who support this initiative
Amount	There is no specific amount for contributions.

Recognition on donor plaques, etc.

Publication of the names of donors	The names of donors and the amount of contribution will be published in The Book of Donors, a booklet accompanying the alumni magazine Waseda Gakuho (donors may also choose to remain anonymous).
Recognition on donor plaques, etc	Donors who make contributions above a certain amount will be honored with the engraving of their names on a donor plaque installed inside the new Research Innovation Center (Building No. 121).

Name of plaque	Individual donors	Corporate/ Organizational donor
Gold plaque	1,000,000 yen	3,000,000 yen
Silver plaque	300,000 yen	2,000,000 yen
Bronze plaque	100,000 yen	1,000,000 yen

Uses of contributions

Contributions will be used widely in projects related to the “Waseda Open Innovation Valley Project” detailed below.

1 Revitalization of research

Employment of doctoral students, employment of top researchers, enrichment of basic research for young researchers, provision of industry-academia collaborative research spaces in competitive fields, granting of incentives to researchers/research organizations, support for publication in top journals, support for presentation of papers at international conferences, etc.

2 Promotion of industry-academia-government collaboration

One-stop center, support for creation of intellectual property, support for utilization of intellectual property, support for matching with industries (including WOI), introduction of seeds technologies, establishment of internal teams to fulfill needs, contract support, support for research fund management and attending research ethic courses, etc.

3 Venture creation and development

Enhancement of intellectual property licensing, creation of incubation communities comprising entrepreneurs and venture capitalists/investors, matching support with a view to enhancing value, etc.

Specific Examples of Projects

► Support for matching with industries: Convention of “Waseda Open Innovation Forum 2021,” the largest industry-academic collaboration event in Waseda’s history

This event offers a space to support the matching of industry with academia to bring about the creation and development of new innovation through advanced technology seeds and the outcomes of industry-academia collaboration. Industry, venture and start-up companies, researchers/technicians, and students who support the “Waseda Open Innovation Valley Project” come together in this event that provides lectures by industry leaders who are driving innovation in Japan and abroad, panel discussions on themes related to start-ups and ventures, and more than 100 booth exhibits, including technological demonstrations.



► Support for young/mid-career researchers: Waseda Key Researcher Program

By promoting team-based research and providing organizational support to young researchers, this system aims to nurture young researchers who will play a leading role in establishing Waseda’s position as an international research university. Efforts are made to provide customized research support and create an environment for researchers who will form the core of next-generation research. Young and mid-career researchers with future potential are selected based on an evaluation of their research achievements and research contents, and the contents of the support provided are determined in consultation with the selected researchers. These researchers should be equipped with the ability to bring a team together, collaborate with other organizations, and acquire large-scale external funds toward the development of their research. They should also engage in international joint research that contributes directly to the appraisal of the university’s research capabilities.



Application method

You can make a contribution through Waseda University's donations website. You can also access this through your smartphone.

Waseda University's donations website <https://kifu.waseda.jp/english>

Search **Waseda Donations**

QR code



Tax Benefits on the Contributions

■ Individuals (Applicable Only to Residents of Japan)

1 Tax credit and tax deduction

Gifts to Waseda University have been certified by the Ministry of Education, Culture, Sports, Science and Technology as donations that are eligible for tax benefits. There are two types of benefits: **[A] Tax Credit** and **[B] Tax Deduction**, as explained below. When filing tax returns, **donors should choose one of the two options.**

[A] Tax Credit

A tax credit is a direct reduction of the amount of income tax, regardless of the income tax rate. For most people, this option lowers taxes more than the [B] Tax Deduction option.

- ◆ If the amount of your gift exceeds 2,000 yen in that year, you will receive a tax credit (i.e. the income tax for that year will be reduced by an amount) equivalent to 40% of the excess amount.

$$(\text{Gift amount}^{\text{※1}} - 2,000 \text{ yen}) \times 40\% = \text{Amount of tax credit}^{\text{※2}}$$

※1 The maximum amount of your gift that is eligible for the tax credit is 40% of your total income for that year.

※2 The maximum amount of tax credit is 25% of your income tax for the year.

[B] Tax Deduction

Since the income tax rate is calculated after tax deductions, if your gift takes up a large portion of your income, this is a better option to reduce taxes.

- ◆ If the amount of your gift exceeds 2,000 yen in that year, the excess amount will be deducted from your income when calculating your taxes for the year.

$$\text{Gift amount}^{\text{※3}} - 2,000 \text{ yen} = \text{Deduction in taxable income}$$

※3 The maximum amount of your gift that is eligible for the tax deduction is 40% of your total income for that year.

2 Deduction in Individual Inhabitant Taxes

Donors whose address is in one of specified municipalities*1 (as of January 1 of the year after the gift to Waseda was made) **can claim deductions in inhabitant taxes for the following fiscal year by requesting a deduction when you file your tax return.** If you wish to receive a deduction in inhabitant taxes without filing a tax return, please contact your local municipality.

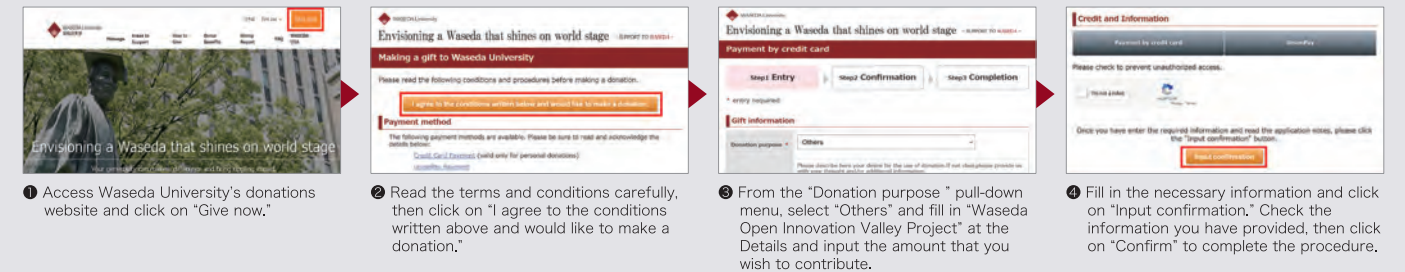
$$(\text{Gift amount}^{\text{※2}} - 2,000 \text{ yen}) \times \text{Inhabitant tax deduction rate}^{\text{※3}} = \text{Amount of inhabitant tax deduction}$$

※1 For the list of eligible municipalities, please visit Waseda University's donations website (<https://kifu.waseda.jp/english>).

※2 The maximum amount of your gift that is eligible for the tax deduction is 30% of your total income for that year.

※3 The deduction rate for inhabitant taxes is: 4% for prefectures, 6% for municipalities, and 10% for both. (A different deduction rate is applicable in some regions.)

Contribution screen (when accessing on a computer)



■ Corporations (Applicable Only to Those That Pay Corporate Taxes in Japan)

Corporations can include their gifts to Waseda in their deductible expenses for the fiscal year. When making your contribution, please select one of the following two ways specified below.

1 Specified Gifts (Can be included in deductible expenses up to a certain amount)

- Specified gifts can be included in deductible expenses separately from the maximum deductible expenses for general donations.
- To include specified gifts in deductible expenses, you need (a) a receipt issued by Waseda and (b) a copy of the tax deduction certificate. (We will send you these documents once we receive your gift.)

[How to Calculate the Maximum Amount Allowed for Deductible Expenses]

$$\text{Maximum amount allowed for deductible expenses} = ((\text{a})\text{Capital base amount} + (\text{b})\text{Income base amount}) \times 1/2$$

(a) Capital base amount = Capital amount (capital amount at the end of the fiscal term + capital reserve amount at the end of the fiscal term) × Number of months in the fiscal year / 12 months × 3.75/1,000

Note: For fiscal years that began before March 31, 2012, the amount was equivalent to 2.5/1,000.

(b) Income base amount = Income amount for the current fiscal term × 6.25/100

Note: For fiscal years that began before March 31, 2012, the amount was equivalent to 5/100.

2 Recipient-Designated Gifts

- The full amount of donation can be treated as a deductible expense if procedures are completed with the Promotion and Mutual Aid Corporation for Private Schools of Japan via Waseda University.
- In order to apply for tax exemption, you will need a receipt issued by the Promotion and Mutual Aid Corporation for Private Schools of Japan. We will send it to you once the Corporation issues it. Please note that it takes approximately two months to receive this receipt after the contribution is made.

※The "date of receipt" for the Promotion and Mutual Aid Corporation for Private Schools of Japan is approximately one month after the payment is made to Waseda. Therefore, if you wish to make a payment less than a month before you close your books, please consult Waseda's External Affairs and Fund-Raising Section, Office of the President, in advance.

※There are donations that are not eligible for deductions under this system. For details, please inquire with Waseda's External Affairs and Fund-Raising Section, Office of the President.

Inquiries

Inquiries on the purpose and uses of contributions

Research Promotion Division,
Waseda University

513 Waseda Tsurumaki-cho, Shinjuku-ku, Tokyo 162-0041
Email: rps-kifu@list.waseda.jp

Inquiries about contribution procedures

External Affairs and Fund-Raising Section,
Office of the President, Waseda University

1-104 Totsukamachi, Shinjuku-ku, Tokyo 169-8050
Email: kifu-ml@list.waseda.jp