

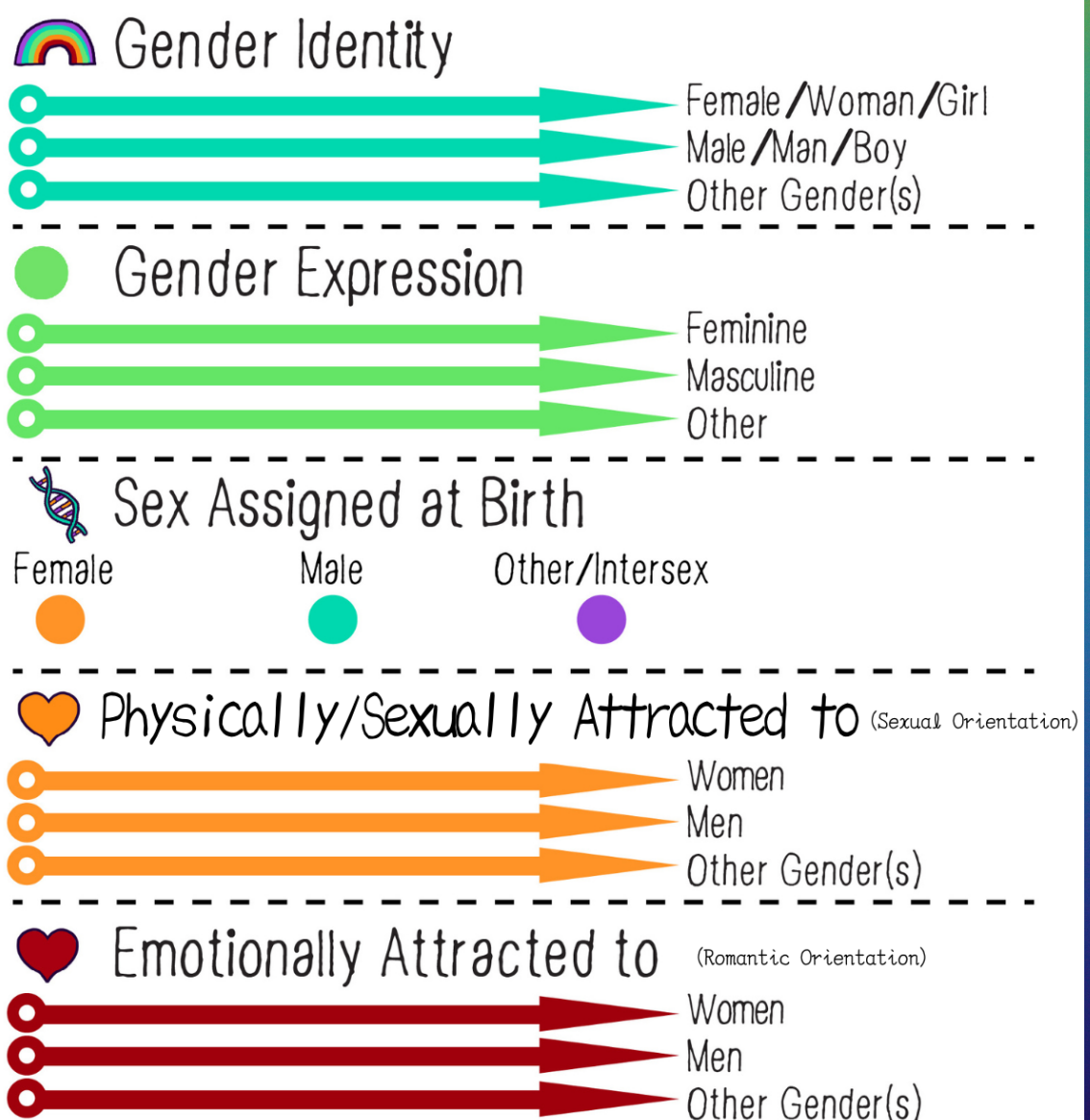
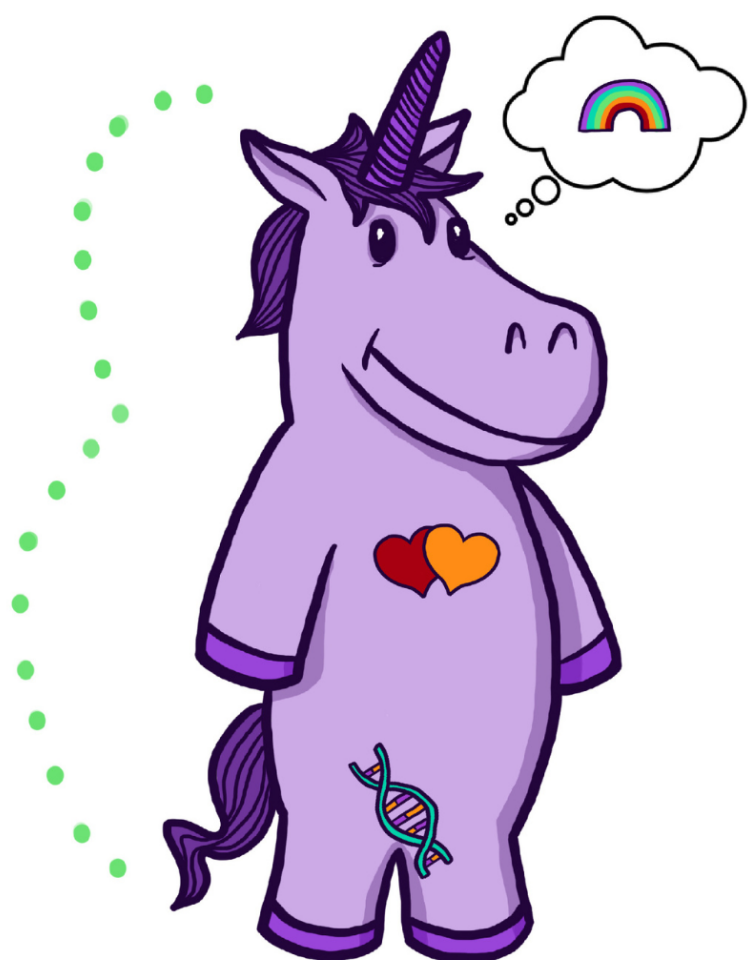
Do you know?

Each of us is very diverse !

The Gender Unicorn informs us that we are all diverse regarding gender identity, gender expression, assigned sex, sexual orientation, and romantic orientation. Each arrow in the Gender Unicorn graphic is the sliding scale, where you can identify and express how strongly or not you experience each element. It helps us notice how you experience yourself now and understand that you do not have to think about your gender and attractions in a binary or "all-or-nothing" manner.

The Gender Unicorn

Graphic by:
TSER
Trans Student Educational Resources



To learn more, go to:

www.transstudent.org/gender

Design by Landyn Pan and Anna Moore

Modifications made by the GS Center at the Waseda University
Student Diversity Center (October 2022)

If you want to know more, please visit the **GS Center** at the Waseda University Student Diversity Center located on **Waseda Campus, Building 10, Room 213 (Floor 2) !**