



# Course Guide

## On-Line Japanese 1(1)・1(2)



Waseda University

# Course Outline

- Welcome to On-Line Japanese 1(1),1(2).
- This course is designed for students who have limited experience in learning Japanese.
- In this class, you will learn basic Japanese grammar and common expressions used in daily life.

- This course consists of on-demand lectures and on-line tutorials.

## Particle で

Grammar Notes 3 (1)(p.52)

で = a particle used to indicate a means of transportation

transportation

バス (bus)

でんしゃ (train)

ひこうき(plane)

じてんしゃ (bicycle)

あるいて (on foot)

で

いきます

きます

かえります

✕



(subway)



go



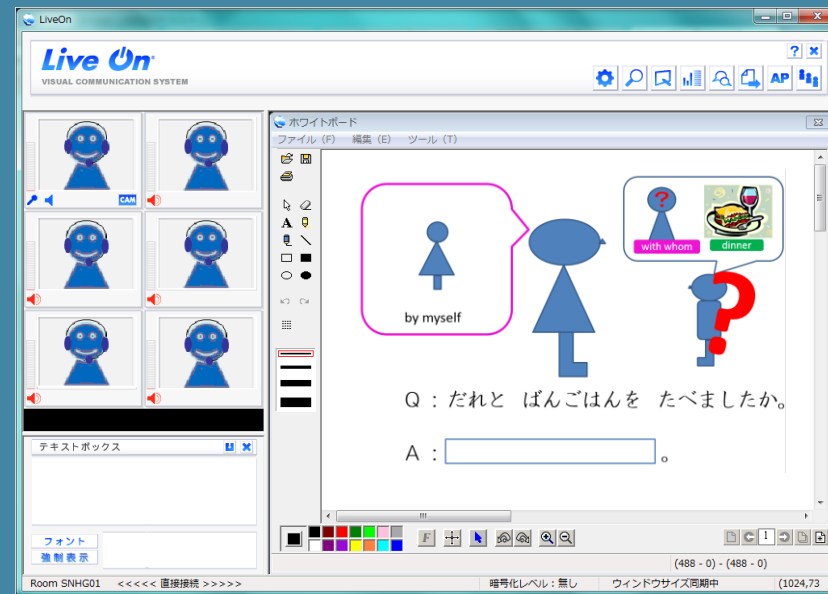
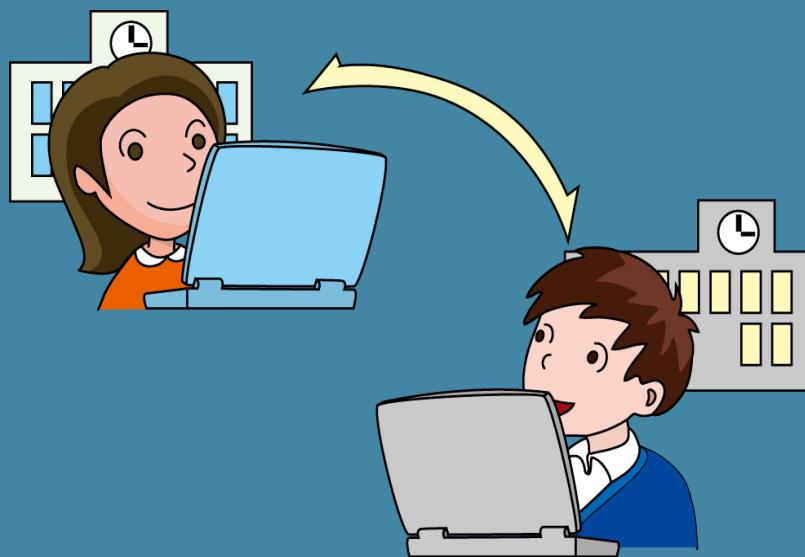
( )

。

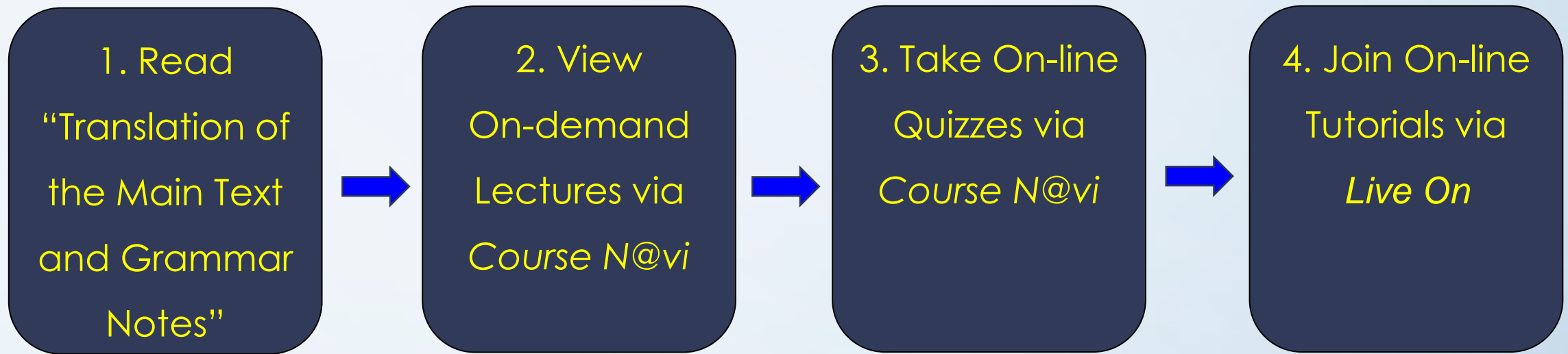
## Samples of On-demand lectures



- Attending to a classroom on campus is not required.



**TV Conference system “Live On”**



**In this course, students are required to do the followings.**

1. **Read the textbook** by yourself.
2. **View the on-line materials.**
3. **Answer simple Vocabulary & Grammar Quizzes** on the Course N@vi.
4. **Practice Japanese with an instructor and other students** during a remote tutorial session (40 minutes).

# TV Conference system “Live On”

- The tutorial sessions will be held by a TV conference system “Live On”.
- “Live On” is a web conferencing software. Pre-installation is not necessary.
- You can start web-conferencing immediately through accessing log-in URL with your PC and internet connection.

# “Live On” Operating Environment (1)

- **Operating System:** Windows Vista SP2 or higher / Windows 7 SP1 or higher / Windows 8 / Windows 8.1
- **Mac Operating System is not available.**
- **Browser:** Internet Explorer 7.0 or higher. Each latest edition of Firefox / Opera / Safari / Google Chrome
- **Memory:** 1GB or more
- **Hard Disk:** 20MB or higher



# “Live On” Operating Environment (2)

- **Sound:** Sound Blaster & compatibility recommended. Audio data can be played back by Windows Media Player through a sound card with a headphone output and a microphone input.
- **A Web camera** that operates with the above PC and a **headset** with a speaker and microphone.
- **DirectX:** DirectX 9.0c or higher.



# “Live On” Operating Environment (3)

Other Software:

- **Adobe Reader** version 7.0 or higher
- **Macromedia Flash Player** version 8 or higher
- **Real Player** version 10 or higher
- **Windows Media Player** version 9 or higher
- Live On plug-in software (**ActiveX**).

# Extra Help

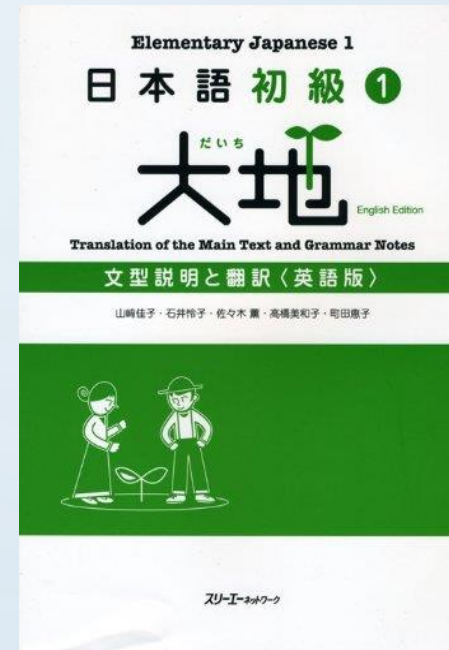
- If you have questions after viewing grammar notes, you can ask questions to your instructors using the Course N@vi system.
- Your instructor will answer either in English or simple Japanese you have already learned.

# Books for This Course

These are the books for this course. Buy both of them.



Nihongo Shokyu(1)  
Daichi Main Textbook



Nihongo Shokyu(1)  
Daichi Translation of the Main  
Text and Grammar Notes

***Please Check!***

**Requirements to participate in this course**

1. Must be elementary-level Japanese learners.
2. Must be able to view on-demand lectures and practice orally at home through the Course N@vi prior to a tutorial session.
3. Must be able to join online-tutorial sessions twice a week.
4. Must have the internet connection to view on-demand tutorial sessions and to join the on-line tutorial sessions.

# Course Registration

• Please refer to the *“Registration Guidebook & Syllabus”*.



◆ Check! : Center for Japanese Language(CJL), website.

# Attendance & Absence Policy

- To pass this course, attend a minimum of 2/3 of the online-tutorial sessions.
- Absences cannot be taken away even with doctor's medical prescriptions.

# Evaluation (grade criteria)

## On-Line Japanese 1(1)

- **Exam : 50%**
  - Grammar & Vocabulary Quizzes, 20%
  - Final exam, 30%
- **Class Participation: 30%**
  - Attendance to tutorials, 20%
  - Class Participation and contribution, 10%
- **Others: 20%**
  - Tasks prior to tutorial sessions  
(View on-demand lectures), 20%



# Evaluation (grade criteria)

## On-Line Japanese 1(2)

- **Exam : 50%**
  - Grammar & Vocabulary Quizzes, 10%
  - Mid-term exam, 20%
  - Final exam, 20%
- **Class Participation: 30%**
  - Attendance to tutorials, 20%
  - Class Participation and contribution, 10%
- **Others: 20%**
  - Tasks prior to tutorial sessions  
(View on-demand lectures), 20%



**Enjoy studying  
Japanese!**

