



Waipapa
Taumata Rau
**University
of Auckland**

Waseda University

Study Abroad 2027

Waseda Customised Study Programme – Regular Academic Programme
for Full Academic Year at the University of Auckland

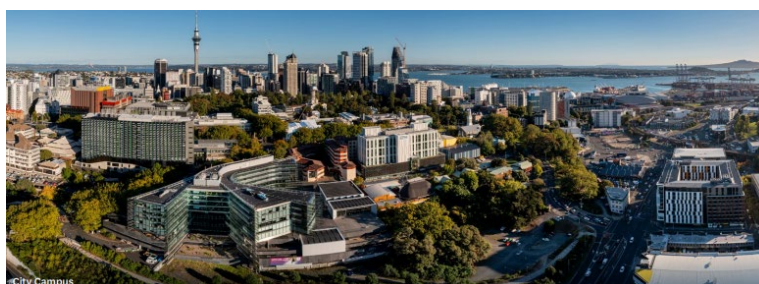
Customised Study Programme at the University of Auckland

The Customised Study Programme at the University of Auckland is designed to help Waseda University students enhance their English proficiency and their understanding of Languages, Arts and International Business.

The University of Auckland is New Zealand's leading research university. Established in 1883, it provides a world-class education for over 45,000 students, including more than 10,000 international students from 120 countries. The university is a vibrant, cosmopolitan community with over 2,000 academic staff and as many general staff. The University is in the heart of cosmopolitan Auckland, the country's largest and most vibrant city, in which students are never far from breathtaking scenery, beautiful beaches and outdoor activities.

New Zealand is an excellent place to study international business given the country's strong reliance on international trade and investment. New Zealand's exports are highly regarded in markets such as Japan, while foreign investment and inbound tourism play a significant role in the national economy. Policymakers and academics, including many in Japan, often look to the 'New Zealand model' for insights. Studying at the University of Auckland also provides Waseda University students with a unique opportunity to engage with Māori and Polynesian culture and those of European settlers who have shaped modern New Zealand.

Waseda University students will arrive in time to attend the orientation and spend two semesters studying at the University of Auckland. Students will enrol in a full-time course load of four courses from the Business School and/or the Faculty of Arts and Education, both of which offer a diverse range of high-quality courses.



Study Abroad - Certificate of Proficiency - Overseas (COPOS)

English Requirements

For entry into the COPOS at the University of Auckland, students must meet the following conditions:

- TOEFL iBT: Overall score of 80 and a writing score of 21
- IELTS Academic: Overall score of 6.0 and no band below 5.5
- [Approved English proficiency tests equivalent to IELTS Academic](#)

Academic Requirements

Student must have completed at least one full-time year at Waseda University and have a better-than-average academic record (equivalent to a B average at the University of Auckland).

- Have achieved a cumulative grade point average of 2.7 on a 4.0 scale, or its equivalent

Calculating your GPA - <https://gpecalculator.auckland.ac.nz/>

* There are no nationality restrictions

* No Graduate (Master & PhD) students.

Programme Dates

| Dates | Programme |
|--------------------------------|--|
| 22 February – 26 February 2027 | Orientation Week* |
| 1 March – 28 June 2027 | Semester One - Certificate of Proficiency - Overseas |
| 19 July – 15 November 2027 | Semester Two - Certificate of Proficiency - Overseas |

* Students must attend the orientation.

Programme Fee

Estimate: NZD 30,700 *2026 fee provided for reference

Includes:

- Tuition
- Registration
- Activity
- Insurance



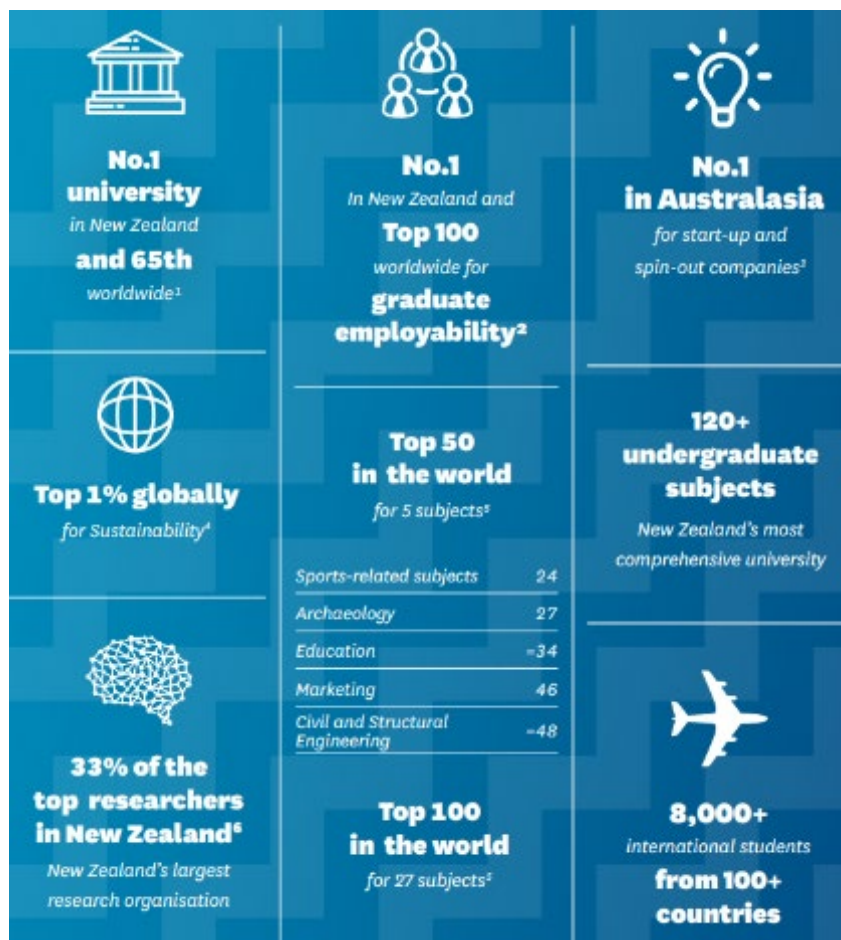
Estimated Room & Board

Homestay include breakfast and dinner on weekdays, and breakfast, lunch, and dinner on weekends.
 NZD 1,624 per month *2026 fee provided for reference

University Accommodation (Self-Catered Residence)

NZD 15,005-17,105 for 42 weeks *2026 fees provided for reference

Please note that the fee information is subject to change as the 2027 fees are not finalised yet.



Academic Study

University of Auckland

Student Advisers in the Business School and the Faculty of Arts and Education will support students in selecting suitable courses from the wide range of programmes available, provided that all prerequisites and English language proficiency requirements for advanced courses are met. Course selections are tailored to each student's individual interests and academic needs.

Courses (2026 examples)

| Business School | Faculty of Arts and Education |
|--|---|
| ACCTG 102 – Accounting Concepts | ACADENG 104 – Academic English for Business |
| ACCTG 151G – Financial Literacy | ANTHRO 110 – Culture and Creativity |
| BUSAN 101 – Data Visualisation Essentials | ASIAN 140 – New Zealand and Asia |
| BUSINESS 111 – Understanding Business | EDUC 121 – How People Learn |
| BUSINESS 112 – Managing Sustainable Growth 1 | GLOBAL 101 – Global Issues, Sustainable Sutures |
| BUSINESS 114 – Accounting for Decision Making | GLOBAL 102 – Introduction to Global Studies |
| BUSINESS 115 – Economics, Markets and Law | HISTORY 107 – Titiro Whakamuri: Histories of Aotearoa New Zealand |
| ECON 151 – Understanding the Global Economy | History 108 – Rise and Fall of the USA |
| ECON 152 Principles of Economics | LINGUIST 100 – Introduction to Linguistics |
| INFOMGMT 192 – Information Tools for Business | MAORI 130 – Te Ao Māori: The Māori World |
| INFOSYS 110 – Digital Systems | MUSIC 149 – Rock to Reggae: Tracking Popular Music in New Zealand |
| INTBUS 151 – Business across Borders | PACIFIC 105 – The Contemporary Pacific |
| MKTG 151G – Essential Marketing | PHIL 105 – Critical Thinking |
| Property 102 – Introduction to Property | POLITICS 107 – New Zealand Politics |
| Statistics 101 – Introduction to <i>Statistics</i> | SOCIOL 101 – Understanding Aotearoa New Zealand |

Students may also be able to take courses not listed here.

Credits

Students will normally enrol in a standard full course load at the University of Auckland, which consists of four courses (60 points in total). Students must be mindful of student visa requirements as well as credit transfer considerations at Waseda University. All credit-related matters should be confirmed directly with the student's home faculty at Waseda University.

Orientation

As part of the University of Auckland's Student Orientation, students will receive essential information about living and studying at the University, practical advice for academic success, and an introduction to New Zealand's unique culture and the beautiful landscapes surrounding Auckland City. Orientation also provides an opportunity to meet fellow international students from around the world.

Accommodation

Living in University accommodation is a great way to immerse in the University of Auckland life as students adjust to living away from home. Students are mostly placed in a single room at self-catering and mixed-gender accommodation unless they request special arrangement to the University of Auckland's Accommodation Office.

Waseda University students will choose one of three accommodation self-catered accommodation options, all located within easy walking distance of the city campus.

Students will live alongside Kiwis and other international students, and will have free access to the University WIFI, utilities and Freeview TV. Membership to the University's Hiwa Sport and Recreation Centre is also included in the accommodation fee.



Opportunities for Learning Through Experience

The University of Auckland offers a wide range of academic and social activities for study-abroad students. The University's main campus is surrounded by parks, beaches, galleries and theatres and it offers exciting opportunities for environmental and cultural experiences.

Facilities and Student Support

The University of Auckland's facilities and support

- Dedicated study abroad and international student support teams
- Campus Security
- Libraries and Learning Services
- English language support
- University Health and Counselling service
- Student Disability Services
- Hiwa - University Recreation Centre
- Spiritual and religious support
- Support for LGBTQI+ students
- Auckland University Students Association



Extracurricular activities

University Clubs, societies and associations

There are more than 240 student clubs and sports teams on campus. Whatever you're into, there's a club for you. The Study Abroad Students' Society (also known as SASS) creates an inclusive community for returned, outgoing, and incoming study abroad students through fun events, trips and social mixers. To see information about all our clubs, visit: www.auckland.ac.nz/clubs

Events

Our City Campus is right in the heart of Auckland and students can discover the range of entertainment and events that the University and Auckland as a city have to offer.

- Waipapa Noho Marae
- Party in the Spark
- Get Into Nature
- Rugby Have a Go
- Auckland Arts Festival
- Round the Bays
- Pasifika Festival Auckland
- NZ International Comedy Festival



Sport and recreation

The Sport and Recreation team at the University run sports programmes for the most social players to the intensely competitive. Here are some opportunities you can join while studying abroad. Also, check out the student-led sports clubs you can join.

- Waka Ama Race
- Sailing
- High performance rugby programme
- Tertiary sport
- Inter-faculty sport
- Fitness

Websites

University of Auckland: www.auckland.ac.nz

English Language Academy: www.ela.auckland.ac.nz

International students: www.auckland.ac.nz/international

Business School: <https://www.auckland.ac.nz/en/business.html>

Faculty of Arts and Education: <https://www.auckland.ac.nz/en/arts.html>

Auckland Tourism website: www.aucklandnz.com

New Zealand Tourism website: www.newzealand.com

