



Waipapa
Taumata Rau
**University
of Auckland**

Waseda University

Study Abroad 2027

Waseda Customised Study Programme - Language Focused Programme
for Full Academic Year at the University of Auckland
English + Study Abroad (February 2027)

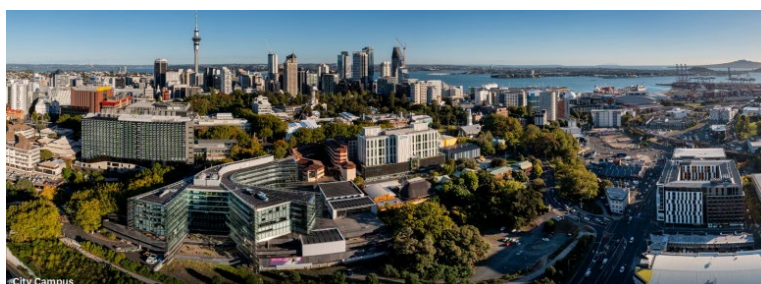
Customised Study Programme at the University of Auckland

The Customised Study Programme at the University of Auckland is designed to help Waseda University students enhance their English proficiency and their understanding of Languages, Arts and International Business.

The University of Auckland is New Zealand's leading research university. Established in 1883, it provides a world-class education for over 45,000 students, including more than 10,000 international students from 120 countries. The university is a vibrant, cosmopolitan community with over 2,000 academic staff and as many general staff. The University is in the heart of cosmopolitan Auckland, the country's largest and most vibrant city, in which students are never far from breathtaking scenery, beautiful beaches and outdoor activities.

New Zealand is an excellent place to study international business given the country's strong reliance on international trade and investment. New Zealand's exports are highly regarded in markets such as Japan, while foreign investment and inbound tourism play a significant role in the national economy. Policymakers and academics, including many in Japan, often look to the 'New Zealand model' for insights. Studying at the University of Auckland also provides Waseda University students with a unique opportunity to engage with Māori and Polynesian culture and those of European settlers who have shaped modern New Zealand.

Waseda University students will begin their studies with a 20-week English language programme at the University's English Language Academy (ELA) to strengthen their English proficiency before undertaking one semester of study at the University of Auckland. Students will enrol in a full-time course load of four courses from the Business School and/or the Faculty of Arts and Education, both of which offer a diverse range of high-quality courses.



English – Foundation Certificate in English for Academic Purpose (FCertEAP)

Entry Requirements

For entry into the FCertEAP at the English Language Academy (ELA), students must meet the following TOEFL or IELTS score requirements at the time of application:

- An overall score of 60 in the TOEFL iBT with the Writing score of no less than 18 and the other band scores of no less than 12, or
- An overall score of 5.0 in the IELTS Academic with the Writing score of no less than 5.0 and the other band scores of no less than 4.5.

https://www.ela.auckland.ac.nz/study-with-ela-courses/fcerteap-undergraduate#section_cms_entry-requirements)

Academic Requirements

Student must have completed at least one full-time year at Waseda University and have a better-than-average academic record (equivalent to a B average at the University of Auckland).

* There are no nationality restrictions

* No Graduate (Master & PhD) students.

Study Abroad - Certificate of Proficiency - Overseas (COPOS)

Entry Requirements

For entry into the COPOS at the University of Auckland, students must meet the following conditions:

- Successful completion of FCertEAP, and
- Have achieved a cumulative grade point average of 2.7 on a 4.0 scale, or its equivalent.

Students who did not meet the above requirements cannot advance to the COPOS in Semester Two and must take another FCertEAP at ELA.

Programme Dates

Dates	Programme
18 January* – 11 June 2027	FCertEAP at ELA
12 July – 16 July 2027	Orientation Week**
19 July – 15 November 2027	Certificate of Proficiency - Overseas

* Students will join the programme on 1 February 2027 due to the Waseda University's academic schedule.

** Students must attend the orientation.

Programme Fee

Estimate: NZD33,724 *2026 fee provided for reference

Includes:

- Tuition of FCertEAP and COPOS
- Registration
- Homestay Accommodation Placement Fee Four-week
- Homestay Fee
- One-way Airport Transfer
- Activity
- Insurance

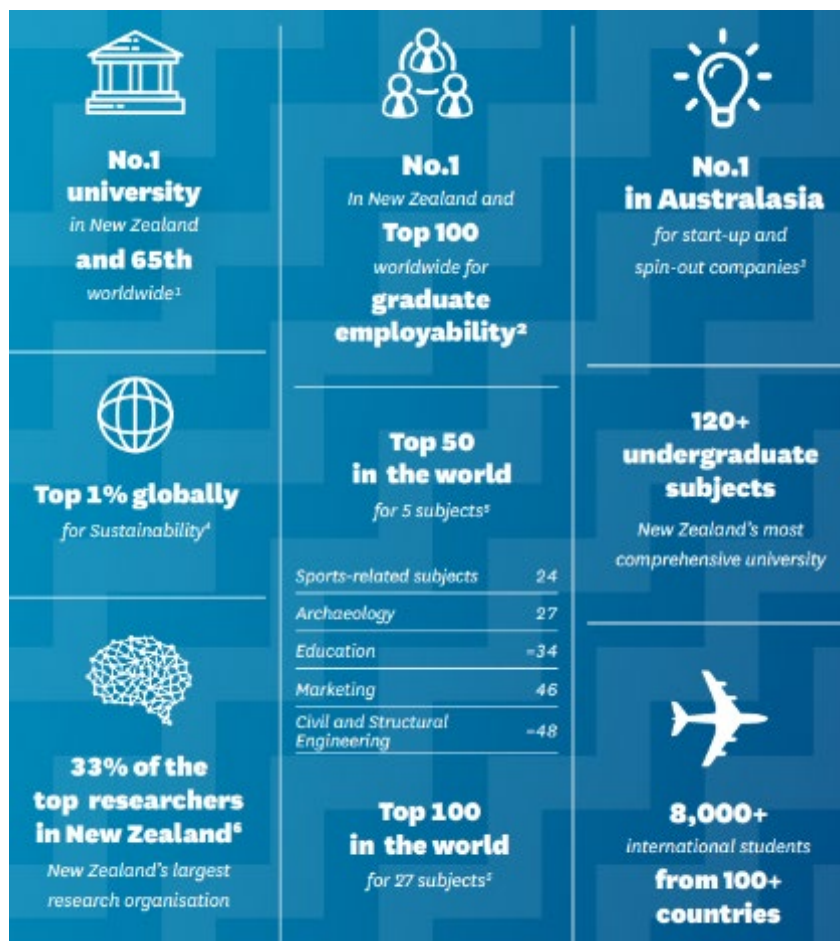


Estimated Room & Board

Homestay include breakfast and dinner on weekdays, and breakfast, lunch, and dinner on weekends.
NZD 1,624 per month *2026 fee provided for reference

University Accommodation (Self-Catered Residence)
NZD 7,677.50-8,727.50 for 21 weeks *2026 fees provided for reference

Please note that the fee information is subject to change as the 2027 fees are not finalised yet.



Academic Study

The English Language Academy

Students will complete the FCertEAP over 20 weeks. They will be in small classes with other students who will be going on to study at the University of Auckland.

The FCertEAP programme covers the following:

- **Writing:** academic styles, essay structures, paragraph writing, introductions and conclusions, cohesive devices, summary writing, editing, writing reports, academic conventions, and academic genres.
- **Listening and Reading:** speed reading strategies, patterns of organisation, making local and global inferences, note taking, strategies to cope with unknown vocabulary, summarising main ideas, listening for stressed words and phrases, and synthesising.
- **Vocabulary/Language:** academic vocabulary, prefixes and suffixes, review of grammatical tenses, focus on correct spelling, focus on grammatical accuracy, and variation in sentence patterns.
- **Speaking and Research:** formal oral presentations, use of PowerPoint, referencing, and research strategies.

University of Auckland

Student Advisers in the Business School and the Faculty of Arts and Education will support students in selecting suitable courses from the wide range of programmes available, provided that all prerequisites and English language proficiency requirements for advanced courses are met. Course selections are tailored to each student's individual interests and academic needs.

Courses (2026 examples)

Business School	Faculty of Arts and Education
ACCTG 102 – Accounting Concepts	ACADENG 104 – Academic English for Business
ACCTG 151G – Financial Literacy	ANTHRO 110 – Culture and Creativity
BUSAN 101 – Data Visualisation Essentials	ASIAN 140 – New Zealand and Asia
BUSINESS 111 – Understanding Business	EDUC 121 – How People Learn
BUSINESS 112 – Managing Sustainable Growth 1	GLOBAL 101 – Global Issues, Sustainable Sutures
BUSINESS 114 – Accounting for Decision Making	GLOBAL 102 – Introduction to Global Studies
BUSINESS 115 – Economics, Markets and Law	HISTORY 107 – Titiro Whakamuri: Histories of Aotearoa New Zealand
ECON 151 – Understanding the Global Economy	History 108 – Rise and Fall of the USA
ECON 152 Principles of Economics	LINGUIST 100 – Introduction to Linguistics
INFOMGMT 192 – Information Tools for Business	MAORI 130 – Te Ao Māori: The Māori World
INFOSYS 110 – Digital Systems	MUSIC 149 – Rock to Reggae: Tracking Popular Music in New Zealand
INTBUS 151 – Business across Borders	PACIFIC 105 – The Contemporary Pacific
MKTG 151G – Essential Marketing	PHIL 105 – Critical Thinking
Property 102 – Introduction to Property	POLITICS 107 – New Zealand Politics
Statistics 101 – Introduction to <i>Statistics</i>	SOCIOL 101 – Understanding Aotearoa New Zealand

Students may also be able to take courses not listed here.

Credits

Students will normally enrol in a standard full course load at the University of Auckland, which consists of four courses (60 points in total). Students must be mindful of student visa requirements as well as credit transfer considerations at Waseda University. All credit-related matters should be confirmed directly with the student's home faculty at Waseda University.



Orientation

As part of the University of Auckland's Student Orientation, students will receive essential information about living and studying at the University, practical advice for academic success, and an introduction to New Zealand's unique culture and the beautiful landscapes surrounding Auckland City. Orientation also provides an opportunity to meet fellow international students from around the world.



Accommodation

Students going to the University of Auckland for the English and Customised Studies programme will typically be placed with an English Language Academy approved homestay for the first four weeks. This enables Waseda University students to live with New Zealand families, experience the 'Kiwi' lifestyle, and practice English in an everyday situation.

Then with the assistance of the English Language Academy staff, students may choose to move to alternative accommodation or continue in homestay. University Residence accommodation is available during one semester of study at the University of Auckland (subject to the availability of places). Advice can also be provided on renting accommodation for single or shared use.

Please note that, due to the availability of places, other accommodation options such as dormitory cannot be guaranteed after staying at the homestay for four weeks.



Opportunities for Learning Through Experience

The University of Auckland offers a wide range of academic and social activities for study-abroad students. The University's main campus is surrounded by parks, beaches, galleries and theatres and it offers exciting opportunities for environmental and cultural experiences.

Facilities and Student Support

ELA facilities and support

- Study Centre
- Student Lounge
- WIFI
- After-Hour Student Support Line
- Pastoral care staff available to help with student issues
- Academic counselling available with a senior teacher to discuss progress
- Safety and well-being workshops

The University of Auckland's facilities and support

- Dedicated study abroad and international student support teams
- Campus Security
- Libraries and Learning Services
- English language support
- University Health and Counselling service
- Student Disability Services
- Hiwa - University Recreation Centre
- Spiritual and religious support
- Support for LGBTQI+ students
- Auckland University Students Association



Extracurricular activities

Weekend excursions at ELA

ELA organises social activities for students on a weekly basis held on weekdays during students' free time. There are also optional weekend excursions available to well-known New Zealand sites such as Rotorua, and the Bay of Islands as well as a wide range of activities for study abroad students which include visits to Māori communities and important cultural sights, trips into the truly spectacular New Zealand landscape, industry and farm visits.

University Clubs, societies and associations

There are more than 240 student clubs and sports teams on campus. Whatever you're into, there's a club for you. The Study Abroad Students' Society (also known as SASS) creates an inclusive community for returned, outgoing, and incoming study abroad students through fun events, trips and social mixers. To see information about all our clubs, visit: www.auckland.ac.nz/clubs

Events

Our City Campus is right in the heart of Auckland and students can discover the range of entertainment and events that the University and Auckland as a city have to offer.

- Waipapa Noho Marae
- Party in the Spark
- Get Into Nature
- Rugby Have a Go
- Auckland Arts Festival
- Round the Bays
- Pasifika Festival Auckland
- NZ International Comedy Festival



Sport and recreation

The Sport and Recreation team at the University run sports programmes for the most social players to the intensely competitive. Here are some opportunities you can join while studying abroad. Also, check out the student-led sports clubs you can join.

- Waka Ama Race
- Sailing
- High performance rugby programme
- Tertiary sport
- Inter-faculty sport
- Fitness

Websites

University of Auckland: www.auckland.ac.nz

English Language Academy: www.ela.auckland.ac.nz

International students: www.auckland.ac.nz/international

Business School: <https://www.auckland.ac.nz/en/business.html>

Faculty of Arts and Education: <https://www.auckland.ac.nz/en/arts.html>

Auckland Tourism website: www.aucklandnz.com

New Zealand Tourism website: www.newzealand.com