

# 早稲田大学学生健康増進互助会 (学生早健会)

Waseda University Student  
Health Promotion Mutual Aid  
Association  
(Gakusei Soukenkai)



# Overview

1. 「学生早健会」とは？
2. 医療給付制度の概要

1. What is the “Gakusei Soukenkai”?
2. Brief overview of the system



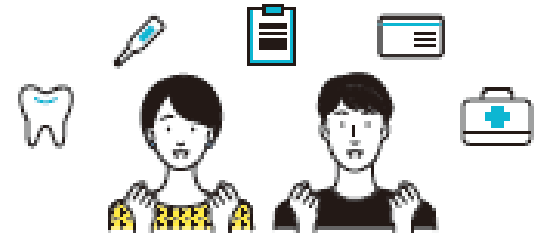


「学生早健会」とは？

What is the  
“Gakusei Soukenkai”?



# 会員 Members



- (1)各学部の正規生(ダブルディグリーを含む)
- (2)各大学院の正規生(ダブルディグリーを含む)
- (3)各大学院の研究生

会費：半期1,500円(※学費と同時に納入)

- (1)Regular undergraduate students (including double-degree students)
- (2)Regular graduate students (including double-degree students)
- (3)Graduate research students

Membership Fee: 1,500 yen/semester  
(※paid with tuition)



# 非会員 Non-Members

- 1.人間科学部通信教育課程学生
- 2.委託学生・科目等履修生・日本語教育センター所属学生
- 3.交流学生
- 4.外国人特別研修生

- 1.Students in the Distance Education Program (E-school) of School of Human Sciences
- 2.Sponsored Students, Non-degree Students and CJL Students
- 3.Exchange Students
- 4.Foreign Special Research Students



# サービス/Service

1.医療費給付/Medical Fee Reimbursement

2.健康イベント/Health Promotion Events

100円朝食100yen Breakfast Campaign



健康フェスタ the health promotion festival 歯科検診 Dental check-up

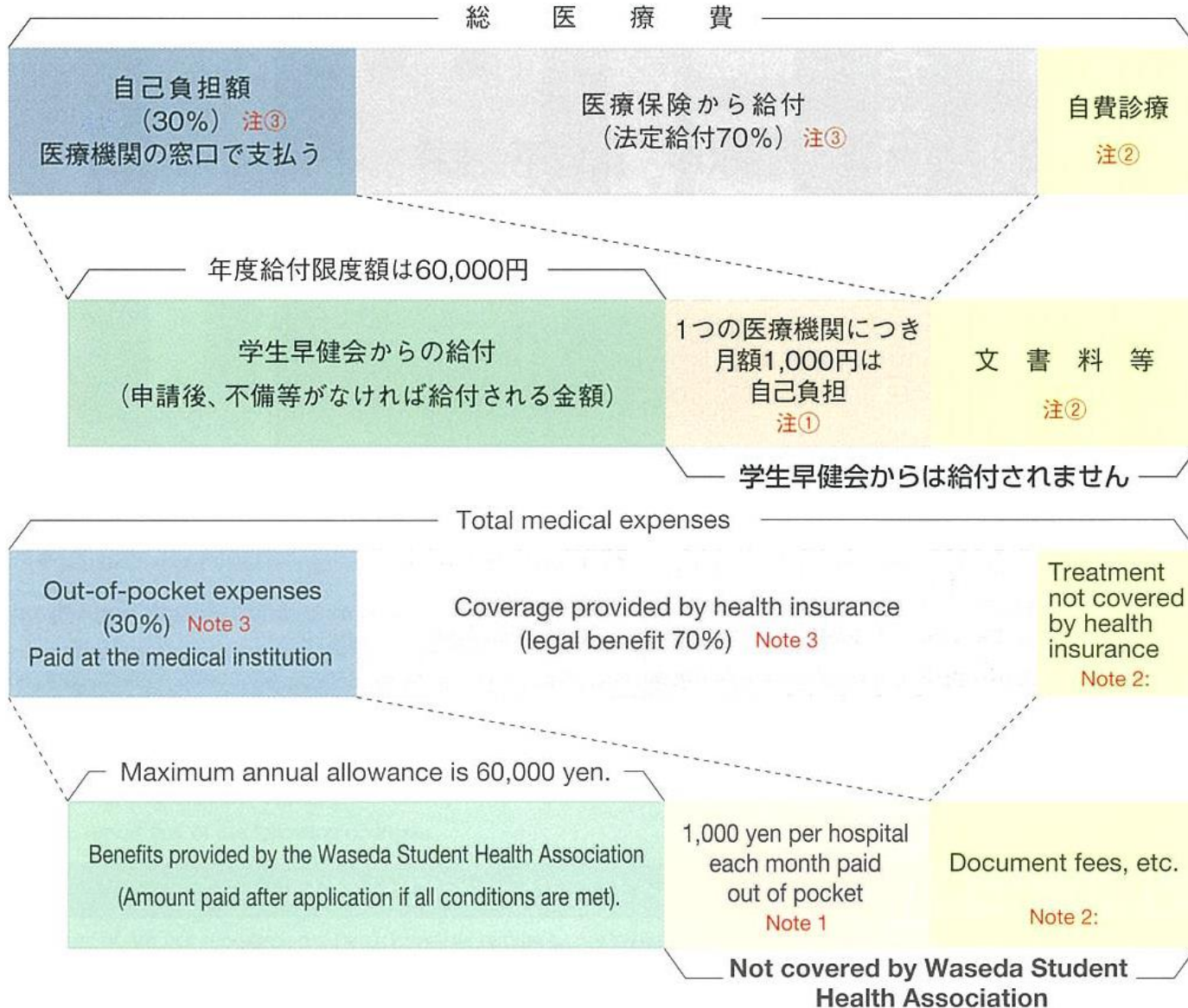


# 医療給付制度の概要

## Brief Overview of the Medical Fee Reimbursement System



# 給付対象 Covered Treatments





# 対象外の診療

## Not Covered Treatments

- 予防接種など保険診療にならないもの
  - 海外の医療機関での診療・薬局での処方薬の購入
- \*詳細はWebサイトでご確認ください。

○Treatments not covered by medical insurance, such as vaccines

○Treatments at foreign medical institutions and prescribed drugs at foreign pharmacies etc.

\*Please check the website for more information!



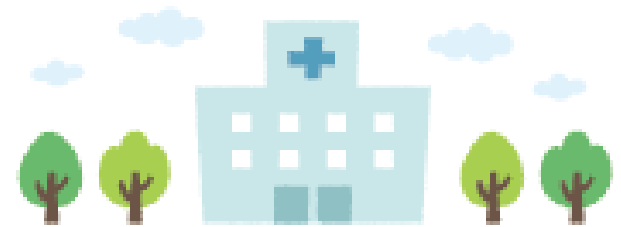
# 給付限度額と給付額

## Maximum Reimbursement and Reimbursement

○給付限度額：**60,000円 / 年度**

○給付額：自己負担額 - 手数料\*

\*1医療機関ごと**1,000円**



○Maximum reimbursement：**60,000 yen / A.Y.**

○Reimbursement：Personal payment at a medical institution - processing fee\*

\***1,000 yen** per medical institution



# 注意点 Notice

- MyWasedaにて「本人名義口座」に学生本人名義の普通預金口座を登録する必要があります。
- 学生生活課への申請書の提出期限は**診療月の翌月から3ヶ月目の10日まで**です。  
(例：10月に診察を受けた場合は1月10日が締め切り)
- You must register your own bank account through the “MyWaseda” site.
- Please submit the “Medical Care Reimbursement Form” to the Student Affairs Division **within 3 months and 10 days from the end of the month you received the treatment.**  
(e.g. If treatment is received in October, applications must be submitted by the 10<sup>th</sup> of January.)

詳細は、学生早健会Webサイトをご覧ください。

For more information, please refer to our Website.



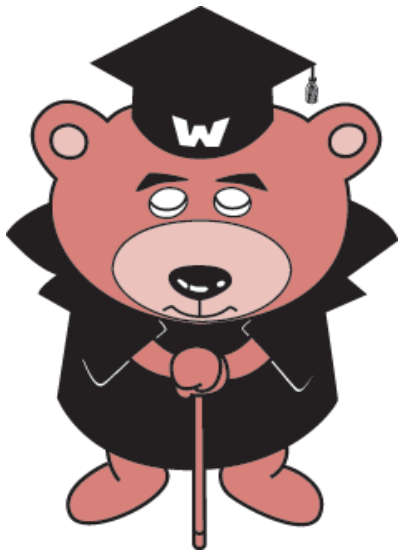
The screenshot shows the Student Affairs Section website. The header includes the Waseda University logo and the text "Student Affairs Section 早稲田大学 学生生活課". A navigation bar contains links for "ニュース", "サークル活動", "施設", "学生生活全般", "学生生活サポート", and "各種学内サービス・施設". The main content area is titled "Student life support" and "学生生活サポート". A sidebar on the left lists various services like "学生健康増進互助会について", "医療費給付", and "国民年金保険料について". The main content area features a large yellow box with the title "Student Health Promotion Mutual Aid Association" and a link to "学生生活課事務所の窓口対応について (11/4更新)". Below this, there are several checkmarks indicating services provided by the association.



早稲田 学生早健会

検索

<https://www.waseda.jp/inst/student/support/studenthealth>



ご清聴ありがとうございました!  
Thank you for listening!

