

# About the Center for Higher Education Studies



早稲田大学 大学総合研究センター  
Center for Higher Education Studies, Waseda University

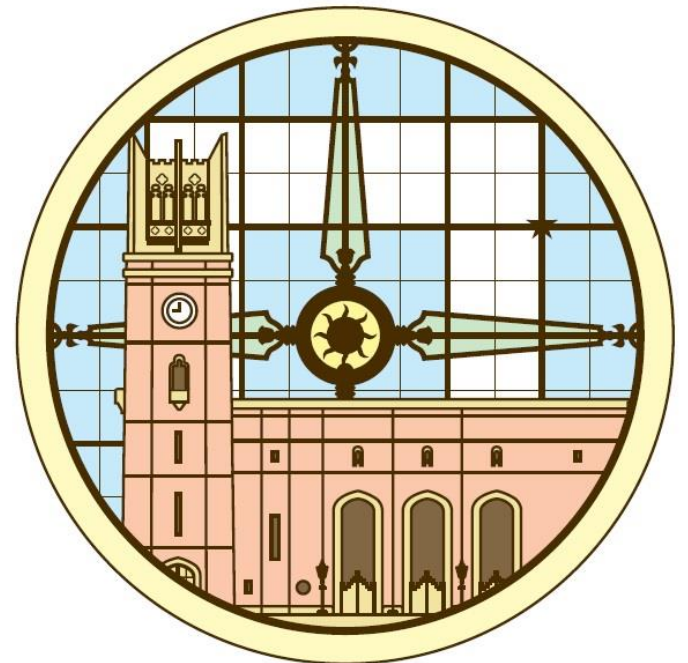
# 1.The Mission of the Center for Higher Education Studies

Education, research, management. We design the ideal future of universities.

The Center for Higher Education Studies (CHES), Waseda University, was established in February 2014. The purpose of CHES is to achieve autonomous and continuous innovation with the aim of improving the quality of Waseda's education, research, and management.

In accordance with Waseda's mission, we support research concerning higher education, together with the research, development, and promotion of IR and educational methods.

The Center for Higher Education and Institutional Research (CHEIR) and Center for Teaching, Learning and Technology (CTLT) were established within CHES.



## 2. Overview of CHES Activities



### 【Core Strategies of Waseda Vision 150】

- Core Strategy 2  
Reconstruction of the Education System to Nurture Global Leaders
- Core Strategy 3  
Educational Content Open to the Public
- Core Strategy 4  
A Switch to a Style of Education that Emphasizes Interactive Problem Finding and Solving
- Core Strategy 5  
Promotion of Proactive Student Planning in University Education and Research
- Core Strategy 12  
Establishment of a Progressive University Structure

# 3. Management Structure

## Senior Director: Junichi NAGASAKI

[ Professor, Faculty of Letters, Arts and Sciences ]

### Center for Higher Education and Institutional Research (CHEIR)

Director: Aya YOSHIDA  
(Professor, Faculty of Education and Integrated Arts and Sciences)

Director: Junko HAMANAKA  
(Professor, Faculty of Education and Integrated Arts and Sciences)

Assistant Professor: Takeshi ENDO

Junior Researcher (Assistant Professor):  
Hirokuni YAMADA

### Center for Teaching, Learning and Technology (CTLT)

Director: Yusuke MORITA  
(Professor, Faculty of Human Sciences)

Director: Kohei KAWASHIMA  
(Professor, Faculty of Sport Sciences)

Professor: Fumiko INOUE

Assistant Professor: Mayumi ABE

### Education Ethics

Professor: Jun FUDANO

### Secretariat

# 4. Adjunct Researchers, Concurrent Center Members

<b>Research Project Name</b>	<b>Name (Job title, affiliation)</b>
<b>DCC</b>	Hayato YAMANA (Vice President of Waseda University, Professor, Faculty of Science and Engineering)
<b>Academic/Research Integrity</b>	Yoshiharu AMANO (Professor, Faculty of Science and Engineering) Kimiko KONO (Professor, Faculty of Letters, Arts and Sciences) Hironori AYABE (Professor, Faculty of Science and Engineering) Kenichi AKAO (Professor, Faculty of Social Sciences) Megumu YOKONO (Associate Professor, Faculty of Social Sciences)
<b>VR Education Development Research</b>	Hayato YAMANA (Vice President of Waseda University, Professor, Faculty of Science and Engineering) Tomonori SANO (Professor, Faculty of Human Sciences) Eriko SUGIMORI (Associate Professor, Faculty of Human Sciences) Masako HAYASHI (Part-time lecturer, Associate Professor at Tohoku University)
<b>Assigned</b>	Tetsuo HARADA (Professor, Faculty of Education and Integrated Arts and Sciences) Daniel DOLAN (Professor, Faculty of Commerce)

# 5. Project 1 — FD(Faculty Development) ~Class Support~

CTLT (Center for Teaching, Learning and Technology) opened in April 2020 and offers one-stop services for educational/learning support and IT use support.

## 【Overview of Services】

- ① Consultation of using Waseda Moodle (LMS)  
→ Support for using Waseda Moodle (an LMS) in class
- ② Consultation of managing classes using ICT tools  
→ Support for using ICT tools during class, such as high-flex courses
- ③ FD (Faculty Development) Support  
→ Learning programs and seminars for faculty
- ④ Fostering TAs (Teaching Assistants)  
→ Streaming workshops and on-demand training subjects
- ⑤ Consultation of on-demand courses and MOOCS (Massive Open Online Courses)
- ⑥ Consultation of classroom facilities/auto-recording system/using remote connection
- ⑦ IT use consultations

etc.



# 5. Project 2 — FD ~Promoting and developing Good Practice~

The “Waseda University Teaching Award”, a commendation system for faculty members, is one of the initiatives to share, promote, and develop excellent educational practices within the university. Interviews with the awardees are made publicly available to share their “Good Practices”.

Waseda Moodle Good Practice Case1 : インタラクティブなオンデマンド授業の実践



Waseda Moodle Good Practice Case2 : 学生のモチベーションを高める工夫



オリジナルテキストの活用と、Moodleでの課題提出により、学生が各自のペースで学習することが可能に

2022年度秋学期早稲田ティーチングアワード

総長賞受賞

対象科目：代数学序論

受賞者：永井 保成



数学のなかでも抽象度が高い「代数学序論」。よくある市販の教科書を指定しても、どのように勉強して良いかペースをつかめない学生が多いと永井教授は感じていた。そこで以前からオリジナルテキストを活用。講義ではテキストに沿って解説をする形にした。また、オンライン授業になったのを機に、課題をMoodle上で提出するようにした。このことにより、学生たちが最後まで課題に取り組み提出するようになり、学習効果の向上に結び付いた。

# 5. Project 3 — FD

## ～Programs with Overseas Partner Universities/Seminars～

These overseas dispatch-type programs and visiting lecturer-type programs have been designed to integrate teaching methods that are based on a learner-centered approach into the university, and to help faculty members acquire internationally competitive class management methods. These programs incorporate seminars on teaching methods, classroom observations, and discussions with faculty members at the partner universities. Partner universities include [University of Washington](#) and liberal arts colleges of the [GLCA/ACM](#). We also offer the EMI (teaching in English for students whose native language is not English) program at the University of Oxford (UK).

We also host events such as the CTLT Seminar, Faculty Café, and Edu Lunch. These are opportunities to share information and Good Practices among faculty members to further improve one's courses.



**Faculty Café**

「教える」ことについて  
語り合う場

**Edu Lunch**

楽曲提供: Kyoko Aneqawa

早稲田大学 大学総合研究センター  
Center for Teaching, Learning and Technology

**CTLT**  
Center for Teaching, Learning and Technology

The image shows two promotional graphics. The top one is for 'Faculty Café', featuring a red background with a white banner containing the Japanese text '「教える」ことについて 語り合う場'. Below this is a stylized illustration of a coffee cup. The bottom graphic is for 'Edu Lunch', featuring a white background with a large, bold 'Edu Lunch' title. At the bottom, it lists '楽曲提供: Kyoko Aneqawa' and the '早稲田大学 大学総合研究センター' logo, along with the 'CTLT Center for Teaching, Learning and Technology' logo.

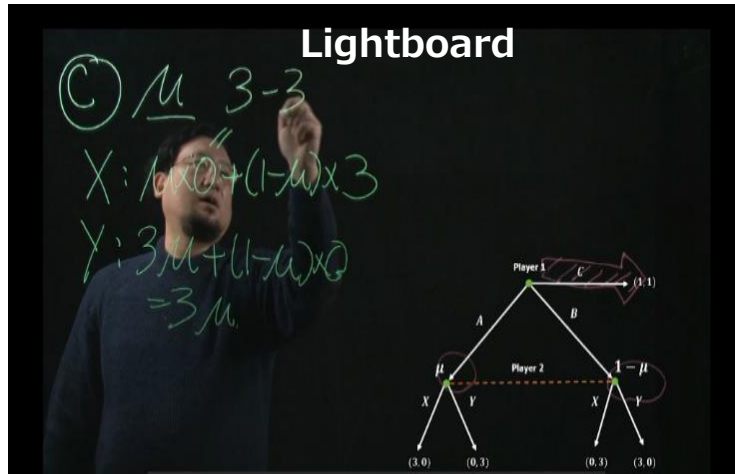


# 5. Project 4 — FD

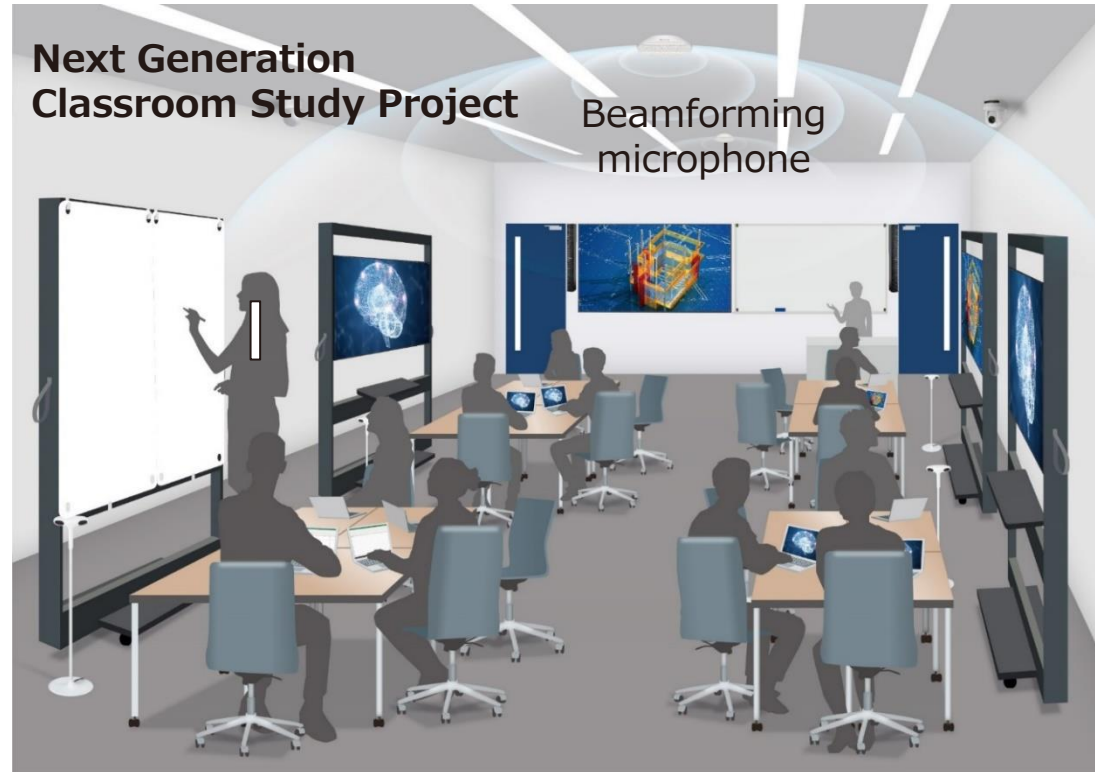
## ~ Teaching Methodology Research and Development ~

The Digital Campus Consortium (DCC) conducts experiments, research, and development in the use of ICT that will lead to new teaching methods.

Lightboard



Next Generation Classroom Study Project



VR Okuma Auditorium

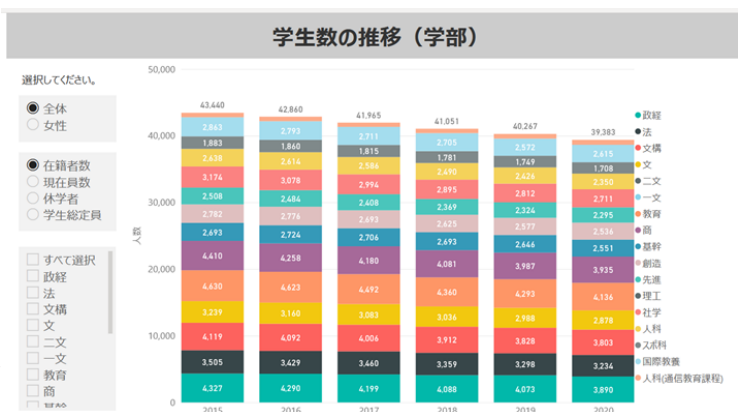


# 5. Project 5 — Higher Education Research (Education Management Support, Education IR)

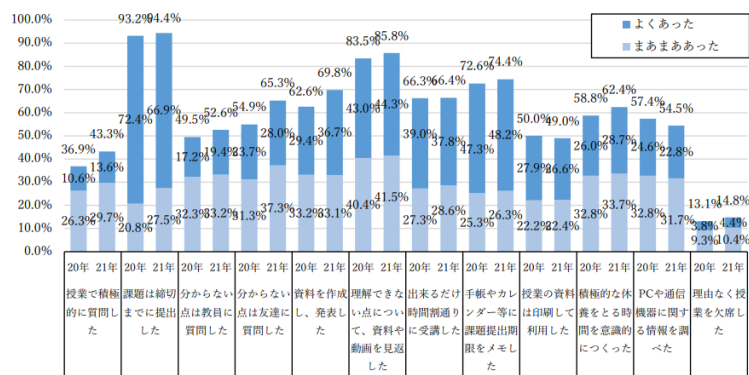
To improve the quality of education and contribute to internal quality assurance, we promote education management support and education IR.

## 【Examples of Information Visualization and Sharing Using BI Tools】

### ■ University Statistics (AY2021～)



### ■ Student Survey (AY2020～)



## 【Support for Self Analysis and Evaluation】

### ■ Survey for self analysis and evaluation (AY2022～)

#### 自己点検・評価に関する質問フォーム

●各箇所からのお問い合わせをもとに、FAQの作成や学内展開する自己点検・評価に関するコンテンツ等の検討および作成を進める予定です。

●入力内容は教務部教育企画課および大学総合研究センターに送付されます。

●質問とその回答は、原則一覧として公開します。これまでの質問に対する回答は随時更新します。

●入力の前に、下記のガイドブック等もご一読ください。

・自己点検・評価ガイドライン

・学修成果の可視化に関するガイドライン

・カリキュラム・マップ作成ガイド

・ルーブリック作成ガイド

●基本的に匿名のフォームとなります。ただし、質問の意図等を把握したうえで回答することが望ましい場合もあると考えておりますので、教育企画課/大学総合研究センターより質問内容について確認をさせていただく場合がございます。差し支えなければ、お名前・連絡先をご入力ください。

●本フォームに関するお問い合わせ、または教育企画課/大学総合研究センターに個別にご相談いただく場合は、  
にご連絡をお願いします。

\* 必須

1. 質問の種類 \*

- 3つのポリシー (アドミッション・ポリシー、カリキュラム・ポリシー、ディプロマ・ポリシー)
- 学修成果の設定
- 学修成果の可視化 (アセスメントポリシー)
- 学修成果可視化後の取り組み

# 5. Project 6 — MOOCs

As one of our initiatives to publicly share education and learning contents, courses based on Waseda University's cutting-edge research are made available domestically and internationally on edX, one of the MOOC (Massive Open Online Course) platforms.

(WasedaX : <https://www.edx.org/school/wasedax>)

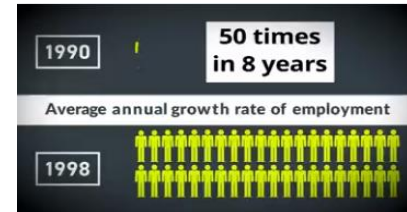
[List of recent WasedaX courses]



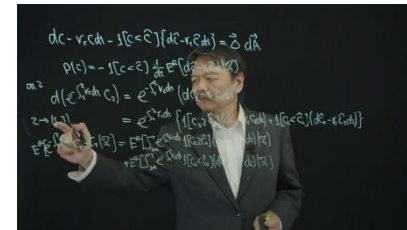
**Sports Safety: A Guide to Preventing Sudden Death in Sports**  
(Professor Hosokawa, School of Sport Sciences)



**Uncovering the Voices of Japanese Literature** (Supervised by Professor Robert Campbell, The Waseda International House of Literature)



**The Growth of Firms and Industry Dynamics**  
(Professor Alex Coad, Graduate School of Business and Finance)



**Black-Scholes Model: For Proprietary Trading**  
(Professor Daisuke Nakazato, Faculty of Commerce, Graduate School of Business and Finance)

# 6. Publications and reports

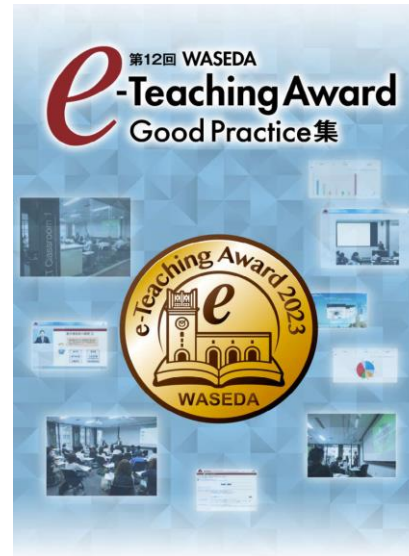
## 【Publications】

- Good Practice
- The Handbook of Interactive Problem Finding and Solving Style of Education: An Introductory Implementation Guide for Your Classroom
- CTLT Guidebook
- Guideline for 100-minute classes



## 【Reports】

- Student Survey
- Alumni Survey
- Study into the Visualization of the Assessment Policy and Learning Outcomes
  - Study into the Qualities and Abilities that Waseda University Graduates are to Acquire



etc.