



Waseda University  
School of Social Sciences  
早稲田大学 社会科学部

# Be a Social Innovator



Transnational

And

Interdisciplinary Studies in

Social

Innovation

English-based Undergraduate Program



# School of Social Sciences

The School of Social Sciences established in 1966, aims to be a school of “**comprehensive social sciences**” through the three principles of “**interdisciplinary**”, “**practical**”, and “**international**” education. These three principles are important and fundamental as they help us to understand a modern society that continues to become increasingly diverse and complicated. It is these three principles which will become a guiding path in helping us identify and solve problems as well as help us in the conceptualization and realization of a better society.

## Faculty of Social Sciences

Institute for Advanced Social Sciences

Graduate School of Social Sciences

School of Social Sciences

• Established in 1966

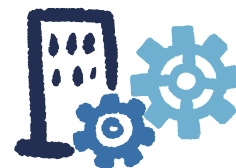
Japanese-based Undergraduate Program

English-based Undergraduate Program

TAISI

Degree offered

Bachelor of Arts in Social Sciences



## Concept of TAIISI:

## Create “Social Innovators”

The School of Social Sciences established an English-based degree program in 2011, and now named “Transnational and Interdisciplinary Studies in Social Innovation (TAISI) Program.” The aim of the TAIISI Program is to create “Social Innovators” and to train students to become **leaders for social change**. As the world continues to globalize and advance, it has become increasingly important that as citizens of the world, we need to not only approach global issues from an **international perspective**, but also discover and implement **more effective, sustainable, and fair solutions** to these issues.



The Japanese character for “TAISI” is “Great Ambition/Wish” and it is our great wish/ambition to create and train future social leaders and innovators.

# Four Study Fields at TAISI

## Field 1

### Community & Social Development

#### Sample Courses:

Rural Development  
Japanese Studies  
Aging and Public Policies in Contemporary Japanese Society  
Social Design  
Health and Human Rights  
Urban History of Tokyo



## Field 2

### Peacebuilding and International Cooperation

#### Sample Courses:

War and Japan  
Gender and Development  
Conflict Transformation  
Liberal, Post-Liberal and Everyday Peacebuilding  
Southeast Asian Studies  
Global Poverty



## Field 3

### Economic & Environmental Sustainability

#### Sample Courses:

Global Food Security : Climate Change, Food, and Agriculture  
Development Economics  
Climate Change and Sustainable Development  
Economic, Social and Environmental Sustainability  
International Finance  
Mechanism Design  
Urban History of Tokyo



## Field 4

### Social Organizations & Working

#### Sample Courses:

Global Labor Governance  
Social Business Practicum  
Social Business  
Cross-Cultural Organizational Behavior  
International Business  
Trans-Pacific Perspectives on Work, Culture, and Society



# Practical Approach

**TAISI students** will tackle social issues through real and simulated experiences, applying what they learn in class to develop practical and sustainable solutions.

This picture was taken in Mindanao during the practical class "Tourism and Environment Protection in Peacebuilding." A local, young volunteer explains to our students how to preserve sea turtles at the TAIS field work class.

Mindanao in the southern Philippines has been a battlefield for communist rebels and Muslim separatist armed movements since the 1970s. A Muslim rebel group signed a final peace agreement in 2014. Local leadership and the people of Davao Oriental Province in Mindanao have engaged in peacebuilding and declared the province insurgency-free in 2022. Now, they focus on economic rehabilitation, social reconciliation, and environmental protection in a natural disaster-prone area. Developing a tourist industry is one aspect of peacebuilding on a beautiful tropical island.



# Small and Diverse Community

**At TAIS,** a small community creates strong connections.

Our close-knit community brings together passionate and talented students from diverse backgrounds.

With personalized learning and meaningful relationships, every student is seen, heard, and supported.

Here, excellence grows through closeness, collaboration, and individuality.



## Major Companies for New Graduates Obtaining Employment

ABeam Consulting Ltd.  
AEON Mall Co., Ltd.  
Amazon Japan  
EY Strategy and Consulting Co., Ltd.  
Hakuhodo Products Inc.

ITOCHU Corporation  
L'Oréal Japan K.K.  
Milbon Co., Ltd.  
Mizuho Bank, Ltd.  
Morgan Stanley MUFG Securities Co., Ltd.

Nomura Real Estate Co., Ltd.  
PwC Consulting LLC  
Rakuten Group, Inc.  
Sony Group Corporation  
Sumitomo Electric Industries, Ltd.

# Discussion Based Classroom



**At TAISI,**  
learning is built  
through conversations.

Our discussion-based classes encourage students to share ideas, challenge perspectives, and learn from one another.

With small class sizes, every voice has space to be heard, every idea has space to be explored, and every question has space to be examined.

Here, education is not just about listening — it is about connecting, thinking, and growing together.

## Faculty Spotlight



**KAGAWA, Megumi**

**Research Field | Peacebuilding and Conflict Analysis and Resolution**

I specialize in 'Peacebuilding' and 'Conflict Analysis and Resolution' as a practitioner/researcher to explore more impact and genuine peacebuilding.

The subject requires holistic cooperation among grassroots of people, local & regional & national stakeholders, and the international community with compassion. To understand various perspectives, I have worked as a peacebuilding practitioner in (and around) conflict-affected areas with grassroots communities, local, regional, and national stakeholders, a UN agency, a security think tank, a national political arena, and in bilateral international peace cooperation, such as Japanese Peacekeeping Operations and the Japan International Cooperation Agency's peacebuilding project in conflict-affected societies.

### Major Graduate Schools for Further Schooling

Columbia University  
Duke University  
London School of Economics and Political Science  
Monash University  
Stanford University

The University of Chicago  
The University of Hong Kong  
The University of Tokyo  
University College London  
University of Cambridge

University of Pennsylvania  
University of Southern California  
Waseda University  
Yale University



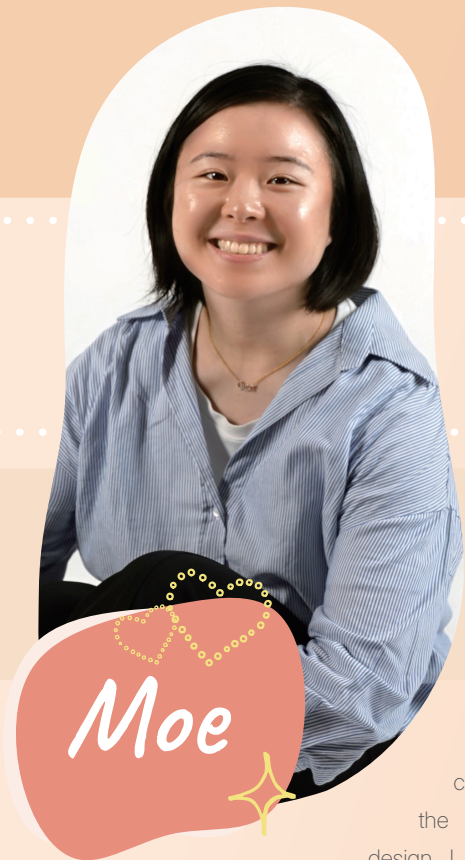
# Student Life

## Why I chose TAISI

I chose TAISI because I became interested in environmental issues, especially water pollution and waste management, after spending my middle and high school years in India, and seeing these issues firsthand.

One of my high school extracurricular activities, an upcycling project using trash collected from beach cleanups, made me realize the potential of integrating art into solutions for environmental issues. These experiences encouraged me to explore such issues both theoretically and practically, while also considering how different fields of the social sciences can contribute to their resolution.

TAISI also appealed to me because it offered an international learning environment where I could continue studying in English, as well as the diverse backgrounds and perspectives of both students and professors.



## What do I study and my seminar

During my first and second years, I mainly studied Environment and Economics. However, after taking a course in community design, I began to expand my understanding of what "environment" means and realized

the close relationship between environment and design. I felt that this connection was what I had been interested in exploring since high school, the possibility of combining art and environmental issues as a form of solution-making. And because of this, I also started taking courses related to community design.

Regarding my seminar, I belong to the 空間映像研究ゼミ (Spatial Design Seminar), which is conducted entirely in Japanese. In this seminar, I learned how to "see" the cities and spaces, especially through photography and visual analysis. The seminar focuses on visual design and on how we can analyze, understand, and communicate the essence of spaces and design to society. I am still in the process of deciding my thesis topic, but I hope to continue exploring my interests in this seminar.

	月	火	水	木	金	土	他
08:50				Game Theory			Statistics Literacy B 02
10:30							
10:40			East and Southeast Asian Study in				Global Food Security : Climate
12:20							
13:10	Introduction to Manga and	Freshman Seminar (Spring)	Labour Market in the Global	Media in Japan : History of			Introduction to Programming 01
14:50							
15:05	Disaster Studies						
16:45							
17:00							
18:40							

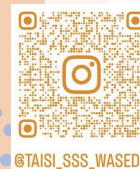
Sample Timetable

## What life in TAISI likes

I genuinely believe choosing TAISI was one of the best decisions I have made. TAISI is a very close-knit community with warm and supportive students and professors. Since there are students from many different countries and regions and the program is small, everyone gets to know each other quickly, and relationships often go beyond grade levels.

The professors are also very friendly and approachable. Sometimes we even go to lunch or dinner together and talk not only about academics, but also about our daily lives and hobbies. I still keep in touch with one professor who left Waseda last year, and I really appreciate how we have remained connected. I feel that there are many things you can gain from the people in the TAISI community beyond what you learn in the classroom.

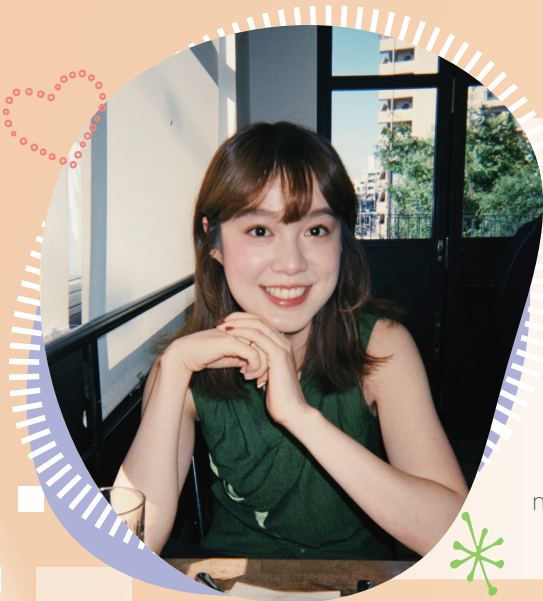
If you want to know more about student life at TAISI... please check out our Instagram (@taisi\_sss\_waseda)!!!



@TAISI\_SSS\_WASEDA



# Testimonials



## CHEN, Yuer

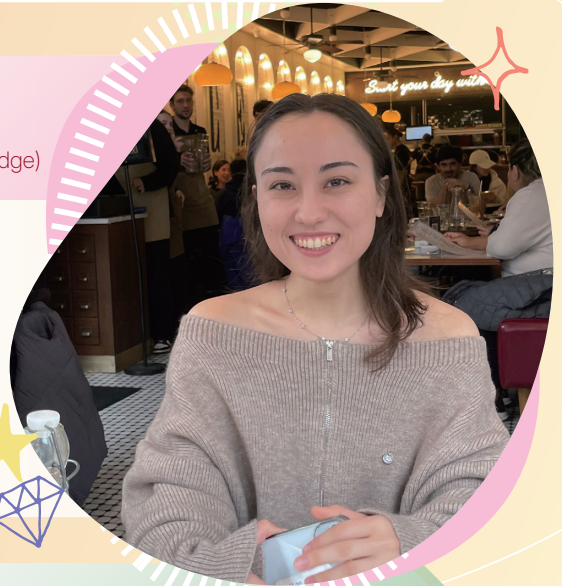
Class of 2025, Graduate School of Social Sciences, Waseda University

TAISI is more than just a place for study—it's an exciting journey that will expand your worldview. Embrace the diversity, take on new challenges, and don't be afraid to step outside your comfort zone. The experiences you'll gain and the people you'll meet here will help you discover a version of yourself you never knew existed.

## MACDONALD, Sarah Kunii

Class of 2023, Law Firm in the U.S. (Master's degree from the University of Cambridge)

TAISI is a place where students are encouraged to forge their own path. Make the most of the opportunities that you are given, and be open and flexible towards the unexpected! The communities around you will always be a source of support.



## LEE, Rieko

Class of 2025, Global Division's New Business Development at Green Carbon

TAISI's close-knit community is something rarely found in other faculties at Waseda. It offers a more intimate learning experience, where you can build meaningful relationships with fellow students and professors while exploring important and fascinating subjects.

## ABDELAITIF, Zainab

Class of 2023, University College London

TAISI is more than a programme — it's a chance to grow. Try new things, build friendships across cultures, and step outside your comfort zone. Even if you feel different or are afraid you will stand out being in Japan, you'll find your place here and I am proof of that. The lessons and friendships will stay with you for life.





Waseda University  
School of Social Sciences  
早稲田大学 社会科学部

*Connect with TAISI*

**Access:** 3rd Floor, Building 14, 1-6-1, Nishi-Waseda, Shinjuku-ku, Tokyo 169-8050, Japan

**Inquiry Form:**

<https://forms.office.com/r/C5HWj7wdFZ>



**Website:**

<https://www.waseda.jp/fsss/sss/en/>

