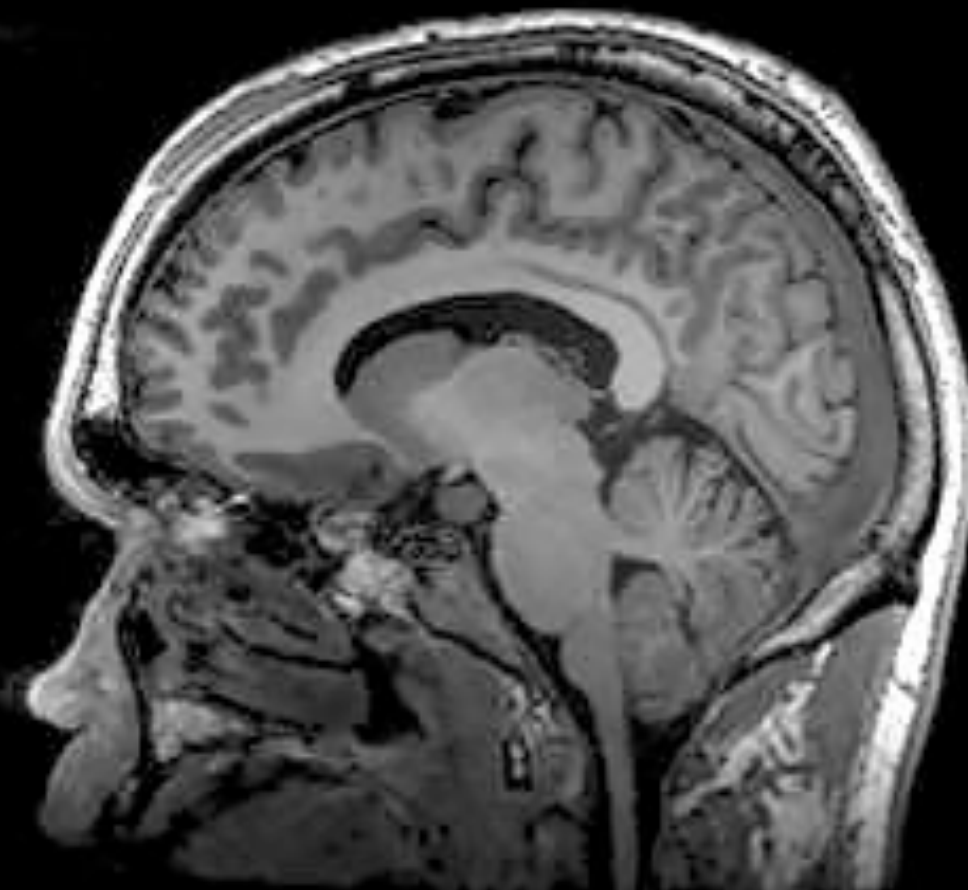


# Experimentation and Political Economy



# Types of experimentation

- Field experimentation
- Survey experimentation
- Laboratory experimentation
  - Psychology studies
  - Experimental or behavioural economics
  - Political physiology
- fMRI studies
- The Quirk Objection

# General Questions

- What is the best balance in the tradeoff between small sample, highly-specific studies and studies aimed at explicitly political questions?
- How can these studies be integrated into more traditional and proximal studies of political behaviour?
- What is the end game?
- Are we measuring beliefs or preferences or actions?

# Specific questions

- Berns
  - what is the (conditional) role of certainty/uncertainty? What about familiarity?
  - What do we gain by actually looking at the brain? Could I draw the same conclusions from a laboratory or survey experiment or from panel data?
- Vyrastekova
  - Do these player types transfer to other games? What of real world behaviour?

# Specific questions

- Takeuchi *et al*
  - Again, what are the implications of these types for real world behaviour?
    - Strategic voting. Participation in collective goods. General altruism.
    - And is this just *mindblindness* (Baron-Cohen 1995)?
    - Cognitive ethology: Life shirts, portable eye trackers, etc..