

Educational Innovation and Communication Studies [EDICS]

English-based
Master's Program

- ▶ Innovation and Sustainability ▶ Post-pandemic education
- ▶ Practice-linked research methodology ▶ Language, culture and global learning



Graduate School of **HUMAN SCIENCES**

At the Graduate School of Human Sciences, we aim to develop an integrated science with a focus on humans to restore the human element that was once lost in the rapid progress of science and technology and, to improve the quality of life through harmony between humans and the environment, maintaining/enhancing sound health in mind and body and other such efforts.

Welcome to EDICS

Since its establishment in 1991, the Graduate School of Human Sciences at Waseda University has resolved the problems facing modern society by fusing together the disciplines of humanities, social sciences, life sciences, information science, etc. In doing so, we have also been providing education and conducting research to deepen our understanding of human beings. One of the most important topics is human development and the education deeply related to it.

In recent years, the traditional education methods have started to lose their effectiveness due to rapid changes in various aspects of modern society. These include changes in the population structure, the roles of individuals both in the workplace and in the home, and in the way of thinking about diversity. At the same time, the demand for cross-cultural education has increased as globalization continues. To develop a new way of learning and teaching that meets the needs of students with various backgrounds in this changing environment, it is essential to fundamentally understand "learning," not only from the perspectives of education, but also from those of a wider range of disciplines and socio-cultural experiences.

Many of the existing teaching methods and learning theories tend to be reductionistic, which is favored in the Western academia. While accepting it in many practices and areas of study, pluralistic ideas are also inscribed at the core of Japanese thoughts and cultural practices. By engaging in research on education in an environment where different cultures meet in this way, students will be able to obtain deep insights into and innovative ideas toward resolving practical problems in education. So, why not join us on the EDICS program and expand new horizons for humankind together?



Prof. Nobuhiro FURUYAMA, Ph.D.

Associate Dean, Faculty of Human Sciences
EDICS Program Coordinator

Prof. Furuyama specializes in cognitive science, ecological psychology, and embodied communication. After graduating from School of Human Sciences and Graduate School of Human Sciences here at Waseda, he moved to The University of Chicago to study speech and gesture for Ph.D. He was appointed as an associate professor at the National Institute of Informatics, The Graduate University for Advanced Studies before coming back to Waseda as a professor in 2014.

About us WASEDA

As of April, 2021

➤ Number of International Students* *Entire Year 2019

8,350 from **121** countries and regions



20

➤ Graduate Schools,
8,577 Graduate Students



➤ International
Faculty Members

574

➤ Alumni Prime Ministers
of Japan



7

Developing innovative educational practices which address the curiosity of increasingly complex societies

At the Graduate School of Human Sciences, we conduct innovative scientific research into a broad spectrum of issues which relate to human wellbeing and advancement. While the rapid progress of science and technology has brought a vast array of benefits to some societies, the adverse effects of 'progress' on people's quality of life is becoming increasingly evident. The ultimate goal of this coordinated interdisciplinary scientific study of humankind is to promote the wellbeing of humankind both as individuals and as participants in society, as well as to foster responsible, equitable, and sustainable custodianship of the resources of planet Earth.

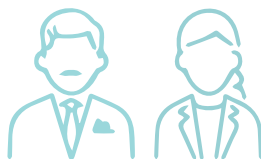
The role of the English-based Graduate program, Educational innovation and Communication Studies (EDICS), is to equip students with research skills and collaborative peer- and supervisor-led group discussions, and provide the knowledge and practical skills needed to design and conduct cutting-edge self-initiated research to promote educational innovation and communication. Under faculty supervision, students will address their own Research Questions and conduct their own enquiries into how to develop innovative and transformational educational practices. It is expected that research enquiries will draw on contemporary theories on human cognition and learning, pedagogy, media communication, cross-cultural learning, leadership, and organizational theories, as well as diverse methodological frameworks.

The EDICS program will prepare Graduates for professional roles in the areas of educational leadership, educational consulting, educational media design, human resource development, organizational development, academic research, educational research and evaluation, educational technology, cross-cultural communication, media design and related fields at the Tokorozawa Campus, in harmony with nature's seasonal beauty, and boasting a wide range of sporting facilities. The English-medium study experience will equip Graduates with the knowledge, experience, and research skills that will maximize their potential for leadership and success in achieving career goals and future research initiatives.

> CEOs & Presidents

10,696

Asahi Shimbun Publishing College Ranking 2020



> Financial Assistance

9.1

billion JPY

Recipients: 13,900 (2019)
(Undergraduate and Graduate)



> Graduate Employability



#1

Private University
in Japan
(#2 in Japan,
#34 in the world)

QS Graduate Employability Rankings 2020

> World University Rankings



#1

Private University
in Japan

QS World University Rankings 2021



MESSAGE FROM PROFESSOR >>

Exploring new ways of education, based on the issues found in the field

In the field of educational innovation and communication, a wide variety of new initiatives are taking place around the world. Redefining education using new epistemological tools such as EdTech is raising important debates about the fundamental nature of education not only among education professionals, but also in society as a whole. In these discussions, it is essential to delve into how the theory-and-practice gap can be narrowed as we establish new practice-oriented methodologies to effectively implement educational innovation and communication with a global mindset in the post-COVID-19 world. Prospective students will find it exciting to study this field at Waseda University—a top research institution in Japan that provides an arena for advanced knowledge and cutting-edge vision creation with highly talented, world-class researchers as their mentors. Students from around the world as well as Japanese students are invited to be a part of this exciting journey. Our program uses English for international academic communications to quickly access and contribute to the latest trends of educational innovation, communication and other relevant fields across the world. This program will also help graduate students learn how to actualize new forms of education in their own local contexts as they take advantage of contemporary wisdoms from diverse fields of human science. We look forward to building a new vision of tomorrow with you, together.



Prof. Noriyuki INOUE, Ph.D.

Graduate School of Human Sciences

Dr. Inoue, Ph.D. specializes in education psychology, education system development, action research methodology and lesson study. After graduating from Harvard University and Columbia University, he served as a full-time faculty member at the University of San Diego and other universities in the U.S. for over 15 years. Since 2017, he has been teaching and conducting research at Waseda University as a Professor.

CURRICULUM

In EDICS, students will fulfill the degree and graduation requirements by taking a series of graduate courses, submitting master's theses and passing the thesis oral defense in English. By completing this process, each student will be conferred a Master of Arts in Human Sciences. Many of the seminars and classes are held face-to-face at the Tokorozawa Campus located in a suburban area of Tokyo. Some courses are offered as online or hybrid courses.

Through this 2-year program, students will develop competency to excel in a broad range of areas such as educational leadership, educational research and evaluation, educational technology, cross-cultural communication, media design and other relevant fields with a global mindset.

Subject Classification	Subject Name	Instructor	Term	Day	Period	Form of class	Credits	Number of Credits Required for Completion
Research Seminars 1	● Educational System Development	INOUE, Noriyuki	Spring and fall	Monday	3・4	Joint class opening	8	8
	● Educational Communication	TBD	Spring and fall	Tuesday	1・2			
Research Seminars 2	● Educational System Development	INOUE, Noriyuki	Spring and fall	Monday	3・4	Joint class opening	8	8
	● Educational Communication	TBD	Spring and fall	Tuesday	1・2			
Ethics in Research	● Introduction to Research Ethics for Human Sciences	MORIOKA, Masahiro and others	Intensive lecture	N/A	Other	Semi on demand	1	1
Lectures A	● Advanced Course of Cognitive Psychology	SUGIMORI, Eriko	Summer quarter	Monday	2	English classes opening biennially	1	2 or more
	● Advanced Topics in Internet Science	NISHIMURA, Shoji	Winter quarter	N/A	Fully on demand	Online	1	
	● Media Communication	HOZAKI, Norio	Summer quarter	Tuesday	4	English classes opening biennially	1	
	● Advanced Seminar on Educational System Development	INOUE, Noriyuki	Spring semester	Tuesday	3	English classes opening biennially	2	
Lectures B	● Advanced Topics in Human-Computer Interaction	Jin, Qun	Fall semester	Thursday	2	English classes opening biennially	2	2 or more
	● Sociocultural Psychology Studies	FURUYAMA, Nobuhiro	Fall quarter	Tuesday	2	English classes opening biennially	1	
	● Educational Data Science	SUGISAWA, Taketoshi	Spring semester	Tuesday	4	English classes opening biennially	2	
	● Multimodal Communication	SEKINE, Kazuki	Summer quarter	Tuesday	3	English classes opening biennially	1	
Projects	● Global Trends in Educational Innovation	INOUE, Noriyuki / ASADA, Tadashi	Fall semester	Monday	2	Regular class opening	2	1 or more
	● Contemporary Issues in Educational Communication Studies	HOZAKI, Norio / INOUE, Noriyuki / SUZUKI, Hiroko	Summer intensive	N/A	Other	Regular class opening	1	
Literacy Subjects (English)	● Reading for Academic Purposes (Advanced) ● Writing for Academic Purposes (Advanced) ● Oral Presentation for Academic Purposes (Advanced), etc.	MORIMOTO, Toyotomi / Scott, Douglass / SUGIMOTO, Sayaka and others	Varies by subject			Regular class opening	1	1 or more
Common Courses among Different Graduate School								0 or more
Research Guidance								Pass
Master's Thesis								Pass

* The contents of the subjects listed are subject to change.

Total number of credits required for completion: 30 credits

Educational System Development

Students will see education as a system that promotes learning and growth for learners, and will study various research methods for developing and improving educational practices. Students will explore human, technical, and system factors that lead to the success of educational system development and consider the very nature of what it means to help others learn and develop.

Media Communication

Students will study media literacy research, media communication, and language communication research. We will introduce TV commercials analysis, eye movement analysis, viewer surveys, advertising discourse analysis, language education using the media, hermeneutic perspectives, evaluation analysis perspectives, and furthermore, production and creative perspectives.



Program Characteristics

EDICS is run as a "cohort program." All students in the cohort will complete the course work in the same sequence each year as they engage in discussions and collaborative activities with the members of the cohort. Students will learn about research methods, and plan and conduct their thesis research projects through "Research Seminars 1"

and "Research Seminars 2" in small groups with guidance from their research advisors. All of the courses are offered in English. (Lecture A/B courses will be offered every two years. Failing to enroll in these courses when they are offered could result in an extended time for graduation.)

1st Year

Fall semester [2022]

MON	Period 2	Global Trends in Educational Innovation
	Period 3-4	Educational System Development B *
TUE	Period 1-2	Educational Communication B *
	Period 3	Advanced Seminar on Educational System Development
THU	Period 2	Advanced Topics in Human-Computer Interaction
		Literacy Subjects (English)

Spring semester [2023]

MON	Period 3-4	Educational System Development A
TUE	Period 1-2	Educational Communication A
	Period 3	Multimodal Communication
	Period 3	Media Communication
		Introduction to Research Ethics for Human Sciences (Online course)

Summer intensive lectures

	Contemporary Issues in Educational Communication Studies
--	--

Course Flow

2nd Year

Fall semester [2023]

MON	Period 3-4	Educational System Development B *
TUE	Period 1-2	Educational Communication B *
	Period 2	Sociocultural Psychology Studies
Online		Advanced Topics in Internet Science

Spring semester [2024]

MON	Period 2	Advanced Course of Cognitive Psychology
	Period 3-4	Educational System Development A
TUE	Period 1-2	Educational Communication A
	Period 4	Educational Data Science

* Take two seminars when they are offered in English.

* This course flow is an example. The actual course schedules may differ.

* If students does not complete the program in two years, they can remain in the program for up to four years.

Global Trends in Educational Innovation

This hybrid course discusses global trends in educational innovation in relation to contemporary theories and research in education sciences. The coursework involves diverse case studies from different cultures and the use of technology to derive meaningful implications for the future.

Common Courses among Different Graduate School / Japanese language subjects

In addition to the subjects listed here, you can also take a wide variety of other classes established by Waseda University. You can also receive a Japanese language education at the Center for Japanese Language. Please note that the Japanese language course will not count towards the required credits for degree completion.

For details > Common Courses among Different Graduate School <https://www.waseda.jp/inst/gec/en/>
> Center for Japanese Language <https://www.waseda.jp/inst/cjl/en/>



Researching ‘communication’ from a wide range of perspectives

In my laboratory, we are researching multimodal communication for a variety of communication styles involving not only speech, but also gestures, eye movement, facial expressions, and posture. Communication involves diverse speech and cognitive processing, including language, attention, memory, perceptions, and spatial relations. In addition to cognitive information processing, communication research also requires knowledge of physiology and sports science, because physical activity is deeply involved at the core of communication. Moreover, the social and cultural circumstances and human relationships surrounding people also affect the quality and quantity of communication, and therefore educational and clinical perspectives are also needed. Knowledge of fields such as robotics, artificial intelligence, and ergonomics will also likely be essential in the process of understanding the essence of communication through interactions with non-human objects and the physical environment. In order to study the highly interdisciplinary field that is communication, it is essential to acquire knowledge from a broad range of areas of expertise. The key feature of this program is that it enables students to learn from faculty in these broad areas of expertise and to understand multimodal communication in depth, and in diverse ways.

The experience of living in a different environment from the country in which you were born and raised will itself broaden the breadth of your communication research and promote growth as a human. Take steps toward broadening your horizons and achieving your desired career by making the most of the environment of the Graduate School of Human Sciences, Waseda University.



Assoc. Prof. Kazuki SEKINE, Ph.D.




Graduate School of Human Sciences

Dr. Kazuki Sekine, Ph.D. (psychology), specializes in multimodal communication and works on it from cognitive, linguistic, and developmental perspectives. He graduated from the Graduate School of Shirayuri University. He was a postdoctoral research fellow at the University of Warwick in the U.K. and at the Max Planck Institute for Psycholinguistics in the Netherlands engaged in communication research. He has been teaching at Waseda University since 2020.

TOKOROZAWA Campus

The rich nature and academic schools harmoniously combine, allowing you to experience a side of Waseda that's different from the city center. In addition to various experiment and practice facilities, we also provide sports-related facilities.

Access

-  From Tokyo to Kotesashi Station 70 minutes
-  From Waseda Campus to Kotesashi Station 50 minutes
-  From Kotesashi Station by school bus 20 minutes



Designed by Professor Yoshiro Ikehara of Waseda's School of Science and Engineering, Department of Architecture, Building No. 100 has won numerous awards including the Japan Art Academy Award.



Building No.101 has also been designed with the natural surroundings in mind. It has features such as two lecture halls with a capacity of 360 people.



"Man and Pegasus," the work of sculptor Carl Milles. It was established with hopes that students will spread their wings far and wide.



With a collection that boasts around 220,000 books, we have garnered together a wide variety of materials, focusing on professional and academic journals and also including general books.

Experience Visual tour of Tokorozawa Campus
<https://waseda-vrtour.com/tokorozawacampus/>

Temperature



Spring
 (March to May)
 8 - 18°C
 46.4 - 64.4°F



Summer
 (June to August)
 21 - 35°C
 69.8 - 95°F



Fall
 (September to November)
 13 - 22°C
 55.4 - 71.6°F



Winter
 (December to February)
 0 - 10°C
 32 - 50°F

Housing

International students can apply to live in one of over 20 student dormitories. Waseda University Property Management Corp. Student Housing Center and Residence Life Center provides information on accommodations for students of Waseda University.

- ▶ **Residence Life Center**
<https://www.waseda.jp/inst/rlc/en/>
- ▶ **Waseda University Property Management Corp. Student Housing Center**
<http://waseda-housing.com/international/>

Fees and Scholarships

Fees

1st year	1,174,000 yen
2nd year	1,174,000 yen

(Students enrolling in September in academic year 2022)

Scholarships

A variety of scholarships are available for international students, such as scholarships offered by Waseda University, scholarships from the Japan Student Services Organization, and scholarships from private foundations.

<https://www.waseda.jp/inst/scholarship/en/>

Admission Schedule 2022

Application period	Applications must arrive between March 25 (Fri) and April 1, 2022 (Fri)
Primary screening (document screening) announcement date for successful applicants	May 13, 2022 (Fri)
Secondary screening (interview exam)	May 21, 2022 (Sat)
Announcement of final decision	May 27, 2022 (Fri)

For details about the admission process, please visit the following URL:
<https://www.waseda.jp/fhum/ghum/en/applicants/admission/>



Graduate School of Human Sciences, Waseda University

2-579-15 Mikajima, Tokorozawa-shi, SAITAMA, 359-1192, JAPAN

[URL] <https://www.waseda.jp/fhum/ghum/en> [E-mail] admission19@list.waseda.jp

