

2027

WASEDA BUSINESS SCHOOL

Graduate School of Business and Finance,
Waseda University

English-based Programs



Waseda University Graduate School of Business and Finance
早稲田大学 大学院経営管理研究科



Actionable Knowledge Unlocks Your Potential.

Mission Statement

WBS creates a dynamic learning community for all stakeholders as a catalyst for developing insightful and responsible global leaders with actionable management knowledge.

Contents

Why Waseda Business School? —————	3
Dean’s Message —————	4
Coordinator’s Message —————	6
WBS Programs —————	8
International MBA (IMBA) —————	10
IMBA Course List in 2026 —————	12
Waseda–Nanyang Double MBA —————	14
Waseda–Nanyang Double MBA Course List in 2026 —————	15
MSc in Finance —————	16
MSc in Finance Course List in 2026 —————	17
Global Initiative —————	18
Executive Education —————	18
Career Development —————	19
Diversity, Equity & Inclusion —————	20
Faculty —————	22
Admissions Information —————	26

Why JAPAN? Why Tokyo?

■ A Top Student City in Asia

Tokyo has been ranked second in the Best Student Cities Ranking, No.1 in Asia, in terms of university rankings, student mix, desirability, employer activity, affordability, student view (QS Best Student Cities Ranking 2025)

■ From Pop and Subculture to Ancient Tradition

Japan’s literature, theater, music, and cinema are the focus of attention from around the world

Why Waseda?

■ Established in 1882

Waseda is one of the oldest institutions of higher education in Japan

■ Worldwide Network of Students/Alumni

Waseda is well-known for its diversity of students (approximately 50,000 enrolled) and wide network of outstanding alumni (over 690,000) built up over 140 years of school history

■ No. 1 for Global Initiative

Waseda admits the highest number of international students (8,274 from 113 countries and territories so far) among Japanese universities, and has the most students participating in study abroad programs

■ Extensive Scholarship Programs

Waseda provides over 250 different scholarships, valued at more than 7.3 billion yen for 11,753 students

Why Waseda Business School?

■ One of the best Business Schools in Japan

Waseda has been ranked in the top 3 business schools in Japan by Eduniversal Best Masters Ranking 2026 (MBA full time) and as the No. 3 business school in Japan by QS Global MBA Ranking 2026

■ EQUIS and AACSB-Accredited School

WBS is one of only two business schools in Japan that have been accredited by both EQUIS and AACSB

■ Dynamic Student Diversity

Students experience culturally diverse discussions and networking with future international business leaders

■ Top-class Faculty

You are promised well-rounded learning from faculty members with both high academic standards and extensive practical experience

■ Rich Variety of Programs

To meet the needs of today’s business and finance sectors around the world, WBS offers a total of five programs, three of which are conducted in English

Waseda Business School

Dean

Prof.
Jusuke IKEGAMI



Waseda Business School (WBS) is a world-class institution committed to cultivating globally-minded leaders through academic excellence and practical relevance. At WBS, internationally-recognized faculty members with deep expertise work alongside talented students from diverse professional, cultural, and national backgrounds, creating a stimulating environment for learning and growth.

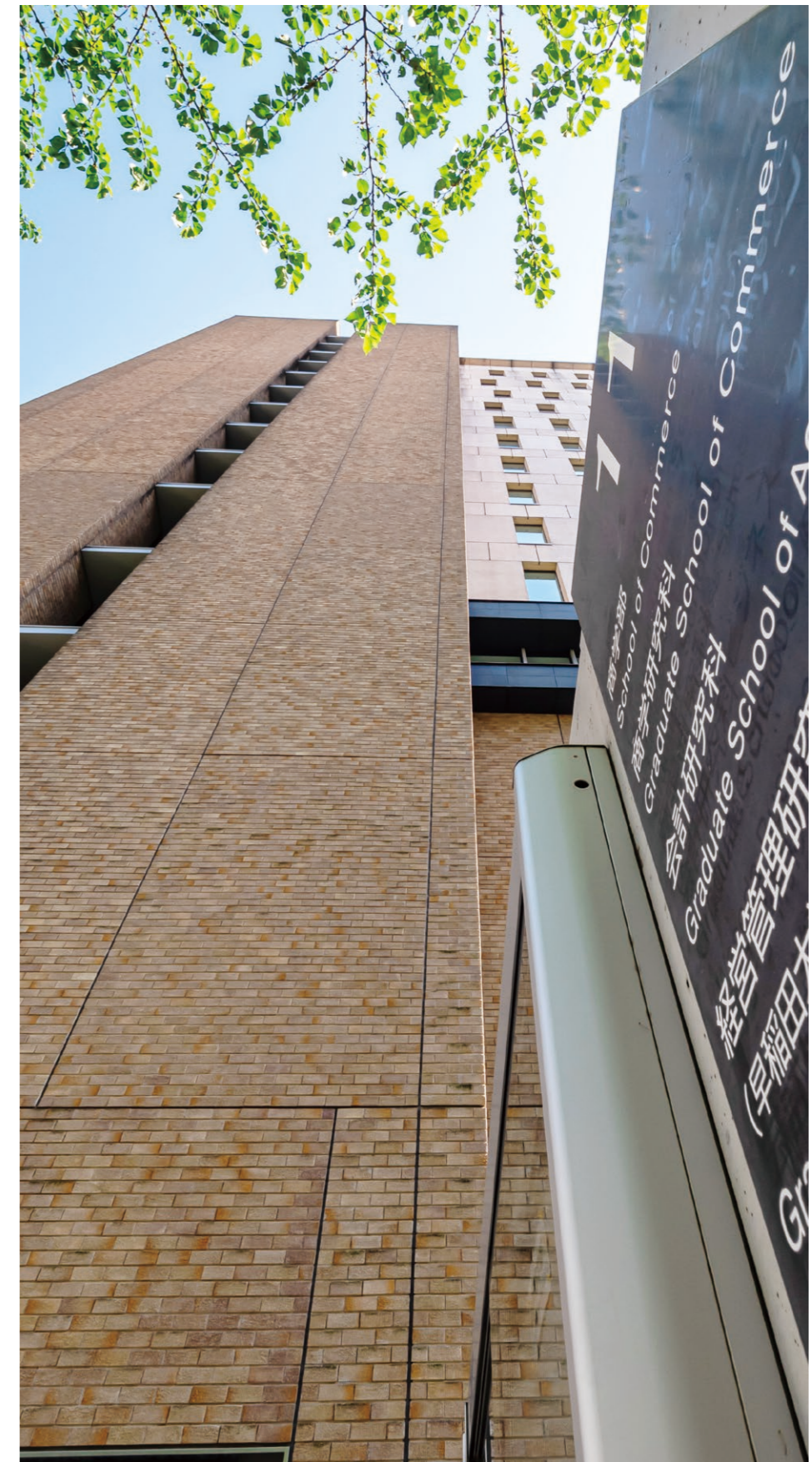
A defining strength of WBS lies in its ability to bridge rigorous scholarship and managerial practice. Our faculty combine academic rigor with practical experience, engaging not only in research and teaching but also in policy discussions and dialogue with business leaders across industries. Through this approach, students gain both strong academic foundations and practical perspectives relevant to real managerial challenges.

WBS offers a distinctive and internationally-oriented learning experience through a broad portfolio of programmes, including full-time and part-time MBA programmes in Japanese, alongside a full-time MBA and MSc in Finance in English. This rich mix of programmes fosters meaningful exchange and mutual learning among students from Japan and around the world.

Today's business environment is evolving at an unprecedented pace. Even organisations focused primarily on domestic markets require an international outlook and the ability to navigate technological disruption, geopolitical uncertainty, demographic shifts, and changing social values. Advances in generative artificial intelligence and other transformative technologies are reshaping not only industries but also the very nature of leadership.

In such an era, success depends on far more than knowledge alone. The ability to understand complexity, make sound decisions amidst uncertainty, and act with integrity has become indispensable. At WBS, we are committed to helping students broaden their perspectives, realise their potential, and become leaders capable of shaping the future.

We very much look forward to welcoming you to WBS.



International MBA Program

Coordinator

Prof.
Akie IRIYAMA



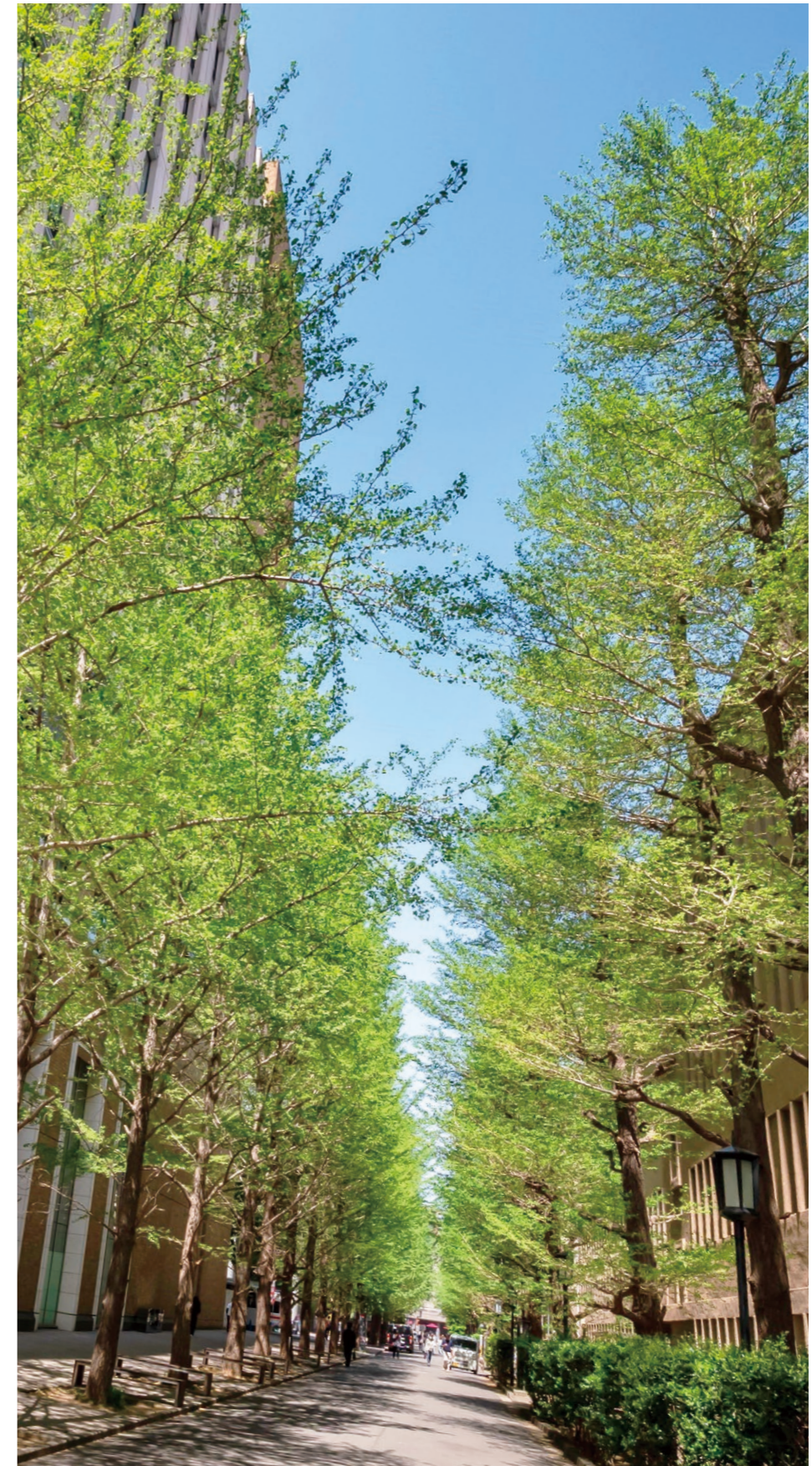
Waseda Business School (WBS), part of Waseda University—one of Japan’s most prestigious academic institutions—is widely recognized as one of Asia’s leading business schools. Its flagship International MBA Program is known for its exceptional competitiveness and global appeal.

One of the program’s unique strengths lies in its world-class faculty, which combines rigorous academic expertise with practical business experience. Many professors hold PhDs from top global institutions, while others bring extensive experience from companies such as McKinsey, Boston Consulting Group, Sony, Mitsubishi, and so on, serving as full-time faculty members. This powerful mix enables WBS to deliver not just theoretical knowledge, but actionable insights directly relevant to today’s business world.

WBS also attracts top-caliber students from over 20 countries, creating a vibrant, international learning environment. The relationships built during the program—friendships, networks, and shared experiences—are truly invaluable and lasting.

In addition, Waseda’s expansive alumni and corporate networks provide strong support for students’ career development, both in Japan and globally. Its central Tokyo location offers not only cultural richness but also unparalleled access to leading companies and business opportunities in Japan. Looking ahead, WBS is committed to supporting students interested in joining, or even founding, startups in Tokyo.

We invite you to spend two transformative years at one of Asia’s most dynamic and forward-thinking business schools.



WBS Programs

WBS offers four English-based programs that cater to the needs of today's business and finance sectors in Japan and across the globe.

■ International MBA

Degree:	Master of Business Administration
Admission Method:	Application with GMAT or GRE Application for Family Business Successors
Duration:	2 years
Annual Intake:	45
Enrollment:	September

■ MSc in Finance

Degree:	Master of Science in Finance
Admission Method:	Application with GMAT or GRE
Duration:	2 years
Annual Intake:	20
Enrollment:	September

■ Waseda–Nanyang Double MBA

Degree:	Master of Business Administration, Waseda University Master of Business Administration, Nanyang Technological University
Admission Method:	Application with GMAT or GRE
Duration:	14 months
Annual Intake:	Approx. 10
Enrollment:	July

■ Waseda–ESCP Double Degree Program

Degree:	Master of Business Administration, Waseda University Master in Management Grande Ecole, Ecole Supérieure de Commerce de Paris
Admission Method:	Selected from among WBS International MBA Program students
Duration:	2 years
Annual Intake:	Approx. 3
Enrollment:	September

Schedule for Lectures

- International MBA
- Waseda–Nanyang Double MBA
- MSc in Finance

	Period	Time
	1st (100 mins)	8:50–10:30
	2nd (100 mins)	10:40–12:20
	3rd (100 mins)	13:10–14:50
	4th (100 mins)	15:05–16:45
	5th (100 mins)	17:00–18:40
	6th (100 mins)	18:55–20:35
	7th (50 mins)	20:45–21:35

WBS has received high acclaim from international university evaluation institutions, and will continue to develop as a high-ranking business school, both domestically and globally.



QS Global MBA Rankings 2026: No. 3 in Japan, No. 30 in Asia
Eduniversal Best Masters Ranking 2026 (MBA full time): No. 3 in Japan, No. 12 in Far East Asia



Molding business leaders who can thrive in the global era

International MBA (IMBA)

- Full-time, 2-year program
- Bilingual courses conducted in English and Japanese
Language acquisition courses also offered
- Faculty-coordinated in-class interaction between
Japanese-based and English-based students
- Abundant study-abroad opportunities

The IMBA has designed a flexible curriculum that provides students with a solid foundation in business fundamentals while allowing them the freedom to pursue courses that align with their career strategies in global business fields.



Zemi (Seminar)

Unique to the WBS Program is the system of Zemi (seminars). Supervised by a professor, students remain in the Zemi groups from the second year, bonding with peers possessing similar research interests through interactive, discussion-based classwork. In addition to class endeavors, this small unit goes out for fieldwork and extracurricular activities, interacting with other Zemi students and alumni. In their Zemi, students gain the skills and methodology to conduct research, deepen their academic and professional insights, and improve rational problem-solving techniques. An MBA Project Paper is the capstone of academic work in the program.

Seminars scheduled to be open in the 2027 academic year (Subject to change)

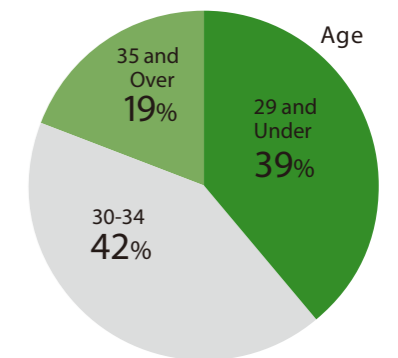
Seminar Title	Faculty in Charge
Management Strategy and Industry Evolution	Shigeru ASABA
Risk Management	Ming Yan William CHEUNG
Firm growth, innovation and industry dynamics	Alex COAD
Entrepreneurship for Happiness	Hironori HIGASHIDE
Frontier of Entrepreneurship, Innovation, and Management	Akie IRIYAMA
Designing Incentives in Markets and Organizations	Hideshi ITOH
Strategy in Practice	Hiroshi KANNO
Sustainable Marketing and Innovation	Tomoko KAWAKAMI
Management of Numbers in Business	David LAU
Innovation & Entrepreneurship	Kanetaka, MAKI
Diversity Management	Chikae NAITO
Creation and Control of Enterprise Value	Shigeru NISHIYAMA
Digital Transformation for Public Good	Kenji SAITO
Strategy and Finance	Katsuhiro SATO
Financial Law and Practice	Satoru SHIBAZAKI
Performance Measurement & Control System for Implementing Corporate Strategy	Nobumasa SHIMIZU
Economic Analysis of Accounting Institutions	Akira USUI

Waseda-ESCP Double Degree Program for IMBA Students

- A Double Degree Program with the world's oldest and prestigious business school
- Students spend the first year at WBS in Tokyo and second year at ESCP in Paris
- Students obtain two degrees: Master of Business Administration, Waseda University, and Master in Management Grande Ecole, ESCP Europe

Student Demographics

As of May 2026



Country/Region

Brazil	Mexico
Brunei	Mongolia
Canada	Myanmar
Chile	New Zealand
China	Peru
France	Philippines
Germany	Republic of Korea
India	Singapore
Indonesia	Taiwan
Israel	Thailand
Italy	Turkey
Japan	United Kingdom
Lebanon	United States
Macau	Vietnam
Madagascar	

Overview Video



IMBA Course List in 2026 As of July 2026

Compulsory Core Courses

Leadership
Marketing
Finance
Business Accounting
Management of People and Organizations

Corporate and Business Strategy
Business Statistics
Technology & Operations Management

Elective Courses (As an example)

Strategy

General Management
Global Management
Business Strategy in the Digital Age
Investment and Turnaround Management
Strategic Service Management
Strategy of eBusiness
Entertainment Business Strategy
Business in the Natural Environment
Japanese Management (bilingual)
Corporate Value Creation in the Age of VUCA (bilingual)

Marketing

Marketing and Social Innovation
Consumer Behavior
Advanced Brand Management
Winning Customers Through Integrated Digital and Retail Strategies

Human Resource, Organizations and Leadership

Managing Diversity and Careers in the Japanese Context
Transnational Leader in the Era of Transformation
Diversity Management in the Accelerated Globalization Era
Strategic Human Resource Management
Organizational Strategies of Japanese Companies

Accounting

Managerial Accounting
Accounting for Financial Instruments
Management Control System for the Global Companies in the Era of Asia: Strategic Perspectives

Finance

FinTech - Financial Innovation and the Internet
Risk Management
Corporate Valuation
Securities Market
Sports Finance: An Introduction (MSc in Finance)
Derivatives Modeling (MSc in Finance)
Advanced Microeconomics (MSc in Finance)
Management of Financial Institutions (MSc in Finance)
Corporate Governance (MSc in Finance)
Mathematical Finance (MSc in Finance)
Derivatives, Exotic Options and Insurance (MSc in Finance)
Theory of Accounting Choices (MSc in Finance)
Risk Analysis (MSc in Finance)
Applied Corporate Finance (MSc in Finance)
Business Ethics for Finance Professionals (MSc in Finance)
Corporate Finance Theory (MSc in Finance)
Japanese Corporate Finance (MSc in Finance)
Financial Engineering (MSc in Finance)

Information, Technology & Operations

Strategic IT Management
AI Strategy for Business
AI, Machine Learning and Big Data for Finance and Management (MSc in Finance)

Entrepreneurship & Innovation

Entrepreneurship
Dialogue with Top Entrepreneurs in Japan
Growth Strategy & Creation of Sustainable Business
Arts of Innovation
Strategy of Family Firms
Science, Technology and Entrepreneurship
Global Entrepreneurial Finance & Family Enterprises
Internationalization Strategies for Startups
Innovation Management (bilingual)
Creative Process and Ethics for Business (bilingual)
Family Business Management A: Theory and Family Business Plan Development (bilingual)
How to Globalize Family Businesses (bilingual)

Economics, Policy and Law

Economics for Business Administration
Business Ethics
Company Law

Analytical Thinking and Business Skills

Data Science for Management
Time Series Analysis (MSc in Finance)
Microeconometrics (MSc in Finance)



Student Testimonial



A place that provides both Japanese and global business exposure

I chose WBS because of its course structure, faculty profile, and international network. I believe WBS is a unique place to pursue an MBA because it provides exposure to the Japanese market and integrates it with international perspectives. WBS also has a unique feature known as the zemi system, which allows students to choose a professor based on their area of expertise and participate in various trips and company visits with other zemi members. I also participated in the student exchange program at University of St. Gallen, where I had the opportunity to learn about international business and participate in company visits to various companies in Switzerland. Through my experience at WBS, I gained an understanding of both the Japanese business environment and the international business environment.

KASHYAP, Raginee From: India

Student Testimonial



Learning Across Cultures, Thinking Without Boundaries

My experience at Waseda Business School has been deeply shaped by the richness of its international environment. Engaging with classmates from diverse cultural and professional backgrounds has constantly challenged my thinking and broadened the way I approach complex problems. These daily interactions go far beyond the classroom, creating a dynamic space where ideas are questioned, refined, and enriched through multiple perspectives. Equally impactful has been the openness of the faculty, who actively encourage students to explore, test, and discuss their own projects and ideas. This culture of intellectual curiosity fosters both confidence and creativity, allowing students to take ownership of their learning journey. Finally, the opportunity to take courses in both English and Japanese has been a defining aspect of my experience. It has enabled me to develop business acumen across two distinct cultural and systemic environments, strengthening both my analytical skills and my ability to operate in a truly global context.

PAKIN, Patrick From: France

Fostering dynamic global leaders through combined studies in Singapore and Tokyo

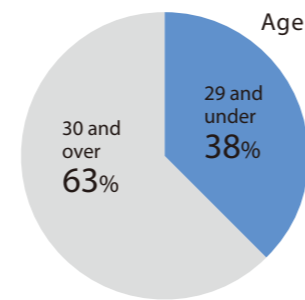
Waseda–Nanyang Double MBA

- Students obtain two MBA degrees in an intensive program of study
- Full-time, 14-month program
- Conducted in Singapore and Japan to combine the strengths of two top business schools in Asia
- In addition to earning two MBA degrees, students will belong to two growing global alumni networks of distinguished leaders



Student Demographics

As of May 2026



Country/Region	
Canada	Singapore
China	Taiwan
Germany	Thailand
Japan	Vietnam
Philippines	

Trimester 1 (Late July–October)

Mainly core courses and “Leading People Globally” module at Nanyang Technological University

Trimester 2 (November–February)

Mainly core courses and “Leading People Globally” module at Nanyang Technological University

Trimester 3 (April–August)

Specialized courses, seminar, research and dissertation at Waseda University

Waseda–Nanyang Double MBA Course List in 2026 As of May 2026

WBS Courses

- Core Courses
 - General Management
- Specialized Courses
 - Organizational Strategies of Japanese Companies in Asia
 - Life Sciences & Medtech Bootcamp: A Business Perspective
 - Dialogue with Top Entrepreneurs in Japan
 - Securities Market
 - Japanese Management
 - Financial Instruments
 - Transnational Leader in the Era of Transformation
 - Innovation Management
 - Entertainment Business Strategy
 - Strategic IT Management
 - Business Strategy in the Digital Age
 - Family Business Management A
 - Accounting for Financial Instruments
- Specialized Research & Paper
 - Japan Industry Studies

NBS Courses

- Core Courses
 - Finance
 - Accounting
 - Marketing
 - Technology & e-Business
 - Economics and Markets
 - Strategic Management
 - Analytics for Decision Making (half course)
 - Corporate Governance and Ethics (half course)
- Specialized Courses
 - Entrepreneurship
 - Supply Chain Management (half course)
 - Advanced Data Analytics
 - Private Equity & Venture Capital
 - Digital Marketing
 - Advanced Data Analytics
- Leadership Development module
 - Leading People Globally

Tuition

S\$ 82,000*

*Published tuition fee excludes prevailing GST

*Residential and living expenses in Singapore and Japan are not included.
(Ref: NBS dorm S\$400 and up)

Overview
Video



Student Testimonial



Double My Opportunities Across Asia with DMBA

After working in Japanese companies for many years, I chose the Waseda-Nanyang DMBA program to broaden my perspective beyond a single market and expand my career opportunities across Japan and Singapore. Studying in both countries gave me exposure to two leading business markets, enriching my MBA experience and allowing me to build long-lasting connections with classmates who continue to inspire and support me. Throughout this journey, what impressed me most was the seamless integration of theory and practice. At Waseda, I was able to revisit concepts I had experienced in my daily work, such as continuous process improvement, through a more structured strategic lens. This helped me deepen my understanding of the Japanese management philosophy behind these practices. Beyond the classroom, Waseda’s experienced professors and strong alumni network provided valuable support for my career transformation. The program has prepared me to navigate diverse business environments and pursue greater opportunities for professional growth.

HSIEH, Yu-chun From: Taiwan

Student Testimonial



Learning Asia Through Two Financial Hubs

I chose the Waseda–Nanyang Double MBA because it offered a rare opportunity to live and learn in two of Asia’s leading financial and business hubs: Singapore and Tokyo. Coming from an investment banking background in Thailand, I wanted to broaden my perspective beyond technical knowledge and understand how business is shaped by culture, institutions, and local ways of thinking. Through the guidance of professors from both Waseda and Nanyang, as well as the strong support of the administrative teams, the program has provided a truly seamless and global learning experience. At WBS, I have especially enjoyed learning about the uniqueness of Japanese business, from long-term relationships and stakeholder orientation to disciplined execution and attention to detail. Living in Japan has also strengthened my cultural adaptability and helped me appreciate different approaches to leadership. For me, this journey connects finance, culture, and Asia’s future.

SRISAJJALERTWAJA, Run From: Thailand

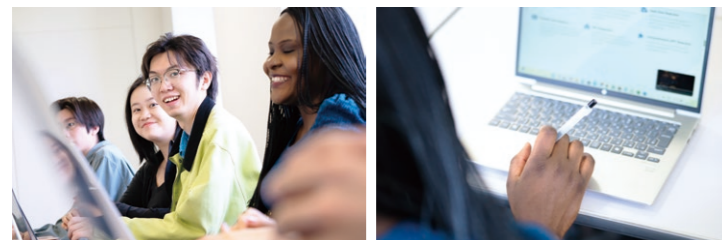
Cultivating global financial professionals in Japan

MSc in Finance

- The only program of its kind offered in Japan
- Full-time, 2-year program
- International learning environment

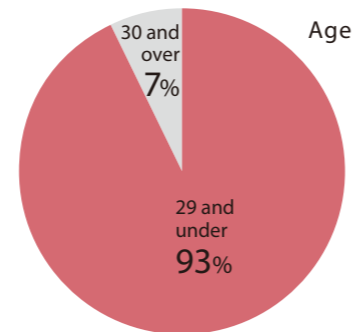
The Master of Science in Finance program is an English-based program to develop successful financial professionals. Responding to modern needs, specialist fields on offer include: Corporate Finance, Investment and Personal Finance, Wealth Management, Internet Finance, and Real Estate and Infrastructure. The curriculum is designed to offer flexible study, supporting students in becoming either highly specialized professionals or research academics in their respective fields.

*Work experience is not required for application.



Student Demographics

As of May 2026



Country/Region

Belgium	Mexico
Benin	Nepal
Canada	Republic of Korea
China	Singapore
France	Switzerland
Germany	Taiwan
Hong Kong	Thailand
India	United States
Indonesia	Vietnam
Italy	

MSc in Finance Course List in 2026

As of July 2026

Compulsory Core Courses

Microeconomics
Equity Investments
Corporate Finance
Fixed Income Investments
Mathematics for Finance
Statistics
ECONOMETRICS

Seminar Title	Faculty in Charge
Economics	Yasuhiro ARIKAWA
Risk Management	Ming Yan William CHEUNG
Hot Papers in Finance	Alex COAD
Entrepreneurial Finance	Nobuhiko HIBARA
Asset Allocation	Keisuke ITO
Applied Accounting in Empirical Finance Research	David LAU
Applied Mathematical Finance	Daisuke NAKAZATO
Topics in Financial Markets/ Sustainable Investment	Naoko NEMOTO
Market Microstructure	Katsumasa NISHIDE
Empirical Analysis of Corporate Finance	Kazunori SUZUKI
Portfolio Management	Hitoshi TAKEHARA
Corporate Finance/Governance	Konari UCHIDA



Elective Core Courses

Derivatives Modeling
Management of Financial Institutions
Corporate Governance
Mathematical Finance
Microeconometrics
Advanced Microeconomics
Theory of Accounting Choices
Advanced Risk Management
Derivatives, Exotic Options and Insurance
Risk Analysis
Sports Finance: An Introduction
Applied Corporate Finance
Corporate Finance Theory
Japanese Corporate Finance
Financial Engineering
TIME SERIES ANALYSIS
Business Ethics for Financial Professionals
AI, Machine Learning and Big Data for Finance and Management

*It is possible to take up to 5 courses from IMBA Elective Core Courses or Elective Courses.

Overview
Video



Student Testimonial



Experiencing the Spirit of Waseda Through Finance and Community

With three years of experience in FP&A, I value learning that connects theory with real-world application. Hence, I really appreciated my time at Waseda Business School, especially in the MSc in Finance program. The curriculum is rigorous yet practical, and many lectures reflect insights that I can relate to from my professional experience. In addition, interactions with classmates from diverse backgrounds have broadened my perspective beyond finance itself and challenged my original way of thinking. Besides, I cannot stress enough how much I enjoy the beautiful campus, from the seasonal scenery to the quiet atmosphere of the library, which creates a tranquil space where I naturally spend more time studying and reflecting. In summary, this open and international experience truly represents Waseda's spirit for me, and it continues to shape both my academic growth and personal development.

HOANG, Viet Hoa From: Vietnam

Student Testimonial



A Transformative Journey

I chose WBS because I wanted to deepen my understanding of finance in an international environment while experiencing life in Japan. After graduating in economics in Italy, I felt the need to challenge myself further and gain a more practical, global perspective. Studying Japanese on my own sparked my interest in the country, and WBS felt like the perfect place to combine my academic and personal goals. Since enrolling, my perspective on finance has become more practical and dynamic. I value the wide range of courses, which lets me tailor my studies to my interests and career goals while building a solid foundation. WBS also supports students in finding internships and jobs, while lectures develop critical thinking and confidence in a multicultural environment.

TOMBOLINI, Mattia From: Italy

Global Initiative Prestigious academic partners leverage a worldwide network

In addition to learning in a global environment where people from all over the world gather, students can also enjoy opportunities to study abroad through WBS's extensive network, which connects them with 41 leading institutions around the world (see list below).

Various study abroad opportunities include:

Partner institutions

- Semester-exchanges
- Summer/Spring intensive programs

Asia / Oceania

Antai College of Economics & Management, Shanghai Jiao Tong University
 China Europe International Business School (CEIBS)
 College of Commerce, National Chengchi University
 College of Management, National Taiwan University
 Edith Cowan University, School of Business and Law
 Faculty of Business and Economics, Monash University
 Guanghua School of Management, Peking University
 Indian Institute of Management, Ahmedabad (IIMA)
 Indian Institute of Management Bangalore (IIMB)
 Korea University Business School
 Nanyang Business School, Nanyang Technological University
 National Taiwan University of Science and Technology
 Sasin Graduate Institute of Business Administration of Chulalongkorn University
 School of Business, Woxsen University
 School of Business, Yonsei University
 School of Economics and Management, Tsinghua University
 School of Economics, Zhejiang University
 School of Management, Zhejiang University
 Singapore Management University
 Thammasat Business School, Thammasat University
 The Chinese University of Hong Kong Business School

Europe

Copenhagen Business School
 EDHEC (École des hautes études commerciales du Nord) Business School
 EMLYON Business School
 ESCP (École Supérieure de Commerce de Paris) Europe Business School
 ESSEC Business School
 HEC-School of Management, University of Lieges
 Mannheim Business School, University of Mannheim
 Rotterdam School of Management, Erasmus University
 SKEMA Business School
 Solvay Brussels School of Economics and Management (SBS-EM), Université Libre de Bruxelles
 University of St. Gallen

North America

College of Business Administration, University of Missouri, St. Louis
 International Business School, Brandeis University
 John E. Anderson Graduate School of Management, University of California, Los Angeles
 Kelley School of Business, Indiana University
 Peter F. Drucker and Masatoshi Ito Graduate School of Management, Claremont Graduate University
 Shilder College of Business, The University of Hawaii at Manoa
 Stephen J.R. Smith School of Business, Queen's University
 University of Southern California, Marshall School of Business

Middle East

Coller School of Management, Tel Aviv University

Executive Education Executive Education Programs on Offer for Senior Leaders

The Institute for Business and Finance (WBF), in close collaboration with Waseda Business School (WBS), delivers executive education.

Hosting tailor-made courses with world-renowned companies and business schools

A growing number of major companies and leading universities are choosing to partner with Waseda Business School to deliver their own executive programs and develop the next generation of global business leaders.



If you would like to learn more, please visit: <https://www.waseda.jp/fcom/wbf/en/education>

Executive courses for Japan's business leaders

A variety of courses are offered for top executives, middle managers, and young business leaders as modules and/or customized staff development programs for individual companies.



Career Development The WBS experience maximizes talent and potential

The Waseda Business School Career Management Center offers comprehensive career support services exclusive to WBS students. Its service covers providing internship/job opportunity information, career guidance seminars, career development & job-hunting preparation workshops, as well as individual career counseling.

In addition, WBS students have opportunities to obtain corporate briefing & career opening updates directly from corporate representatives during WBS on-campus seminars. WBS supports international students in realizing their vision.

On-Campus Career Seminars & Networking Events

- Career guidance for fresh graduates & mid-career recruitment (recruitment process, job search, resume & entry sheets writing, interviews and networking, etc.)
- International students and alumni networking
- Japanese business culture & etiquette seminar

Recent On-Campus Corporate Seminars

Accenture	Gyoseki Co., Ltd.	NTT DATA INSTITUTE OF MANAGEMENT CONSULTING
Amazon Japan G.K.	J Will Corporation	NYC Inc.
Ardian Japan	JERA	Point 72
Bloomberg L.P.	KPMG Consulting	Renova
Borderless Japan	MITSUI & CO., LTD.	Richemont Japan Limited
Dai-ichi Life International Holdings	Monitor Deloitte	SBI Investment
Ecolab G.K.	MSCI	Tata International Ltd.
Fever	Nissan Motor Co., Ltd.	Uber Japan
Google LLC	Nomura Securities	Vector Renewables Japan K.K.

Companies from which WBS graduates have received job offers in recent years

Audit, Advisory & Consulting

Accenture Japan Ltd	KPMG Consulting Co., Ltd.	Revamp Corporation
Deloitte Tohmatsu akt Co., Ltd.	KPMG FAS	Simplex Holdings, Inc.
Deloitte Tohmatsu Consulting LLC	L.E.K. Consulting	Skylight Consulting Inc.
Deloitte Tohmatsu Financial Advisory LLC	Mars & Co	Tata Consultancy Services
DIR Information Systems Ltd.	Mercer Japan Ltd.	Tecnos Japan
DKSH Japan K.K.	Monitor Deloitte (Indonesia)	
EY Strategy and Consulting Co., Ltd.	NRI Consulting & Solutions (Thailand) Co., Ltd.	
KPMG AZSA LLC.	PwC Consulting LLC	

FMCG

British American Tobacco Japan, Ltd.
 Monster Energy Japan
 Philip Morris Japan

Automotive

Mitsubishi Fuso Truck and Bus Corporation
 Woven By Toyota

Energy

JERA Co., Inc.
 New Energy Development
 Shizen Energy Inc.

Media & Entertainment

Bloomberg L.P.
 ByteDance Ltd.
 COVER
 Imagica Group
 Konami Holdings Corporation
 SEGA Corporation

Finance

Allianz Investment Management SE (Germany)
 Ardian Japan
 BlackRock Japan Co., Ltd.
 Bloomberg L.P.
 BofA Securities Japan Co., Ltd.
 China Resources Bank Of Zhuhai Co.,Ltd
 Citigroup Global Markets Japan Inc.
 E.SUN Bank (Japan)
 Goldman Sachs
 Haitong Securities Co., Ltd. (China)

IT

Amazon
 Apple (China)
 China Electronics Technology Group Corporation
 HENNGE K.K.
 Infosys Japan
 Lenovo Japan Ltd.
 Mercari Inc.
 Nextremer Co., Ltd.
 NSD Co., Ltd.
 NTT DATA, Inc.
 Rakuten
 Siemens K.K.
 Softbank Corp.

Diversity, Equity & Inclusion at WBS

“Respect each other, respect equality and diversity” is the core philosophy of the Waseda University Promotion of Diversity Declaration. At WBS (Waseda University Business School), we actively promote an environment where everyone’s individuality and abilities are respected and utilized, regardless of gender, disability, sexual orientation/ gender identity, nationality, ethnicity, religious beliefs, age, social background, or any other attribute. Accepting diversity and transforming differences into strengths is an essential quality for business leaders in a global society. WBS aims to enable students to acquire this attitude and become agents of diversity in the society of the future.

Four pillars of Waseda University’s diversity promotion

Waseda University is systematically promoting diversity through the following four organizations.

- **Office for Promotion of Equality and Diversity:** This is the core organization responsible for university-wide strategies, institutional design, and awareness-raising initiatives.
- **GS Center (Gender and Sexuality Center):** This center provides support, information, and counseling related to gender and sexuality, and is a pioneer among universities nationwide.
- **Accessibility Resource Center · ICC (Intercultural Communication Center):** These centers promote respect for diversity across the campus by providing reasonable accommodations for students with disabilities and supporting international students and exchange programs.

Support for Balancing Learning and Childcare

Waseda University Nursery Center for Children of Students, Faculty, and Staff has been providing temporary childcare services on campus since 2011 to support students in balancing childcare with their studies and research. This system, which supports both family and career or academic pursuits, embodies a flexible approach to learning that can be adapted to different stages of life.

Comprehensive Support for Students with Disabilities

To create an environment where no one has to give up on learning, the entire campus promotes universal design and provides barrier-free information, accessible restrooms, and universal design maps. WBS collaborates with the Accessibility Resource Center from the admission stage to provide individualized accommodations and support for exams and classes.

A Campus of Global Harmony



As an international MBA student from Taiwan at Waseda University, I have truly appreciated the diversity and inclusiveness of the WBS community. Studying at WBS has allowed me to connect with classmates from all over the world, each bringing unique cultural and professional backgrounds to the classroom. Through group discussions, team projects, and global case studies, I have gained not only academic knowledge but also a deeper understanding of cross-cultural collaboration.

One unique feature of WBS is the wide variety of “zemi” classes. Each student joins a small group led by a professor, and zemi members come from diverse countries and backgrounds, making it a great opportunity to build deeper international connections through weekly discussions and collaborative work—something quite different from typical courses in Taiwan.

Understanding and Consideration for Diverse Genders

Waseda University is working to eliminate “invisible exclusion” by abolishing gender columns in student directories and informing faculty and staff not to judge gender based on appearance. The GS Center also provides consultation support for students who are sexual minorities, creating an environment where they can study and work with peace of mind.

WBS’s Unique DEI Actions

- **Cultivating diverse management talent is a societal imperative**

The realization of a society where people from diverse backgrounds can thrive is a major challenge for the 21st century. In particular, the diversification of human resources working on the front lines of business is considered essential for revitalizing industry and promoting innovation. WBS recognizes this social demand and considers it an important mission to provide advanced MBA education to women, foreign nationals, and people with disabilities. Currently, nearly 40% of our students are women, and the proportion of international students and faculty members is higher than that of other business schools in Japan, reflecting our commitment to fostering a globally open environment. We are also actively working to diversify the backgrounds of our faculty members.

■ ERS Award

In 2017, WBS established the ERS (Ethics, Responsibility, Sustainability) Student Award to support practical research and activities aimed at creating a sustainable society. Diversity and inclusion initiatives are at the core of ERS, and the activities of students and alumni are evaluated based on the outcomes of learning that embraces diverse values.

Even outside the classroom, I have had opportunities to participate in international networking events, language exchange sessions, and cultural activities that further enrich my experience. Events such as I-Night bring together IMBA and evening MBA students in a relaxed atmosphere, helping students bond across programs.

In addition, WBS offers a wide range of student clubs covering academics, hobbies, and cultural communities. Through these activities, I have been able to explore Japanese culture, meet new friends, and enjoy a more well-rounded student life.

WBS has created an environment where students from different countries can learn from one another and grow together. I am grateful to be part of such a vibrant and globally minded community.

My Experience Studying in Japan with WBS



My first trip to Japan nearly ten years ago only deepened my desire to study and live abroad. That dream came true when I had the opportunity to continue my education at WBS. Coming from a major U.S. city, I thought I was familiar with international communities—but Japan is truly something special.

This international exchange with WBS, in the biggest city in the world, allowed me to meet incredible people and immerse myself in rich cultural experiences. From fierce debates in WBS classes to hiking Mt. Fuji together and strolling through Tokyo in beautiful yukatas, my peers and I have become lifelong friends. I hadn’t realized how much I had been living in a bubble until I began learning alongside such a diverse group of international students, each with unique perspectives and life stories.

Living—not just experiencing—a different culture firsthand, while interacting with both locals and fellow foreigners, helped me grow immensely, both personally and professionally. I now feel more confident and comfortable with myself, and my worldview has expanded in ways I never expected.

I have absolutely no regrets about taking the leap to move to a foreign country alone to study a new subject. It has been the best experience of my life so far.

I am hearing impaired



WBS does not close the door to learning because of disabilities, and provides opportunities for those who are willing to learn.

In the lectures, we were able to express our opinions and participate in discussions just like other students thanks to the care taken to guarantee information, such as the dispatch of sign language interpreters and transcribers and the use of voice recognition applications.

WBS provides an environment where everyone, regardless of disability, can learn equally, speak independently, and grow.

International Experiences at WBS



Before I came to the Waseda, I always wanted to come to Japan to establish my second life here; I had studied Japanese and had a JLPT N1 certificate already. But even so, I was a little bit concerned about how much I could adapt to the Japanese culture and school environment, especially during the COVID-19 period.

However, it turned out that I did not have to worry about it at all. Waseda is one of the most internationalized higher education institutions in Japan; there are many international students from a variety of countries with different cultural backgrounds.

You can encounter many opportunities to mingle with Japanese students from other Japanese-oriented MBA programs. You can communicate with them in Zemi (where you can make your life-long friends) and even in lectures conducted in Japanese to hone your Japanese skills further.

Thus, if you consider WBS a candidate school for your next educational journey, I highly recommend the school to those who want to study in Japan because the school can truly embrace the international environments while it provides many different opportunities for you to grown even after graduation.

Faculty

- Faculty in charge of IMBA
 - Faculty in charge of other programs
 - Area(s) of Specialization,
 - Educational Pedigree (School, Degree),
 - Previous Experience & External Positions
- *Faculty on Sabbatical in 2025 may continue into 2026

■ Prof.
Shigeru ASABA

- 1 Corporate Strategy, Business Strategy
- 2 Ph.D. (UCLA), Ph.D./MA/BA (University of Tokyo)
- 3 Gakushuin University, President at the Academic Association for Organizational Science, Board Member of Nippon Beet Sugar Manufacturing, and Oki Electric Industry



■ Prof.
Akie IRIYAMA

- 1 Strategic Management, International Business
- 2 Ph.D. (University of Pittsburgh), MA/BA (Keio University)
- 3 Asst. Prof. at State University of NY (SUNY) Buffalo, Business Consultant at Mitsubishi Research Institute, Board Member of Macromill, Inc.



■ Assoc. Prof.
Ming Yan William CHEUNG

- 1 Market Liquidity, Real Estate Investment Trusts, Behavioral Economics, Corporate Finance
- 2 B.Sc. & M.Phil. in Mathematics (University of Hong Kong), Ph.D. in Finance (University of Hong Kong)
- 3 Member of European Corporate Governance Institute, University of Vienna, University of Macau



■ Prof.
Hideshi ITOH

- 1 Organizational Economics, Contract Theory
- 2 BA/MA (Hitotsubashi University), Ph.D. in Decision Sciences (Graduate School of Business, Stanford University)
- 3 Kyoto University, Osaka University, Hitotsubashi University, A former President of the Japanese Economic Association(2022-2023)



■ Prof.
Alex COAD

- 1 Firm Growth, Firm Performance, Innovation, Entrepreneurship
- 2 Ph.D., M.Sc., Economics, (Paris 1, France). B.A., Economics, (HEC Lausanne, Switzerland)
- 3 Previously at the European Commission. External consultant at the OECD and World Bank. Editor: Research Policy. Editor: Small Business Economics



■ Prof.
Hiroshi KANNO

- 1 General Management, Strategy in Practice
- 2 MA in Engineering (Tokyo Institute of Technology), MA in Industrial Administration (Carnegie Mellon University)
- 3 Partner at the Boston Consulting Group until 2008. Now serving as a Board Member/Auditor for several companies



■ Prof.
Hironori HIGASHIDE

- 1 Entrepreneurship, Creative Process, Humanity-Centered Management
- 2 Ph.D./MBA/DIC (Imperial College, London), BA in Economics (Keio University)
- 3 WERU Investment Co., Ltd. (Director), CIESF (Councilor: Cambodia International Education Support Foundation)



■ Prof.
Tomoko KAWAKAMI

- 1 Marketing
- 2 Ph.D. (Kobe University), MA/BA (Osaka University)
- 3 Kansai University, Affiliate Professor of University at the Washington, Editorial Review Board of Journal of Product Innovation Management, Outsider Director of Takara Holdings Inc.



■ Assoc. Prof.
David LAU

- 1 Voluntary Disclosure, Auditing, Corporate Governance
- 2 BCom, BCom (Hons, 1st Class) & PhD in Accounting (University of Auckland Business School)
- 3 Full member of Chartered Accountants Australia and New Zealand



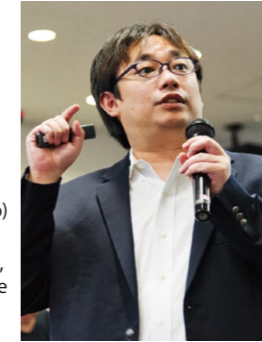
■ Prof.
Katsuhiro SATO

- 1 Corporate Strategy, Global Management, Corporate Finance, Value Creation Management
- 2 Ph.D. in Management Science from Kyoto University, M.Sc. from Stanford University, and L.L.B. from Keio University
- 3 Development bank of Japan Partner at McKinsey & Company Consulting Fellow at Research Institute of Economy, Trade, and Industry



■ Assoc. Prof.
Kanetaka MAKI

- 1 Technology Management, Innovation & Entrepreneurship, Science Policy
- 2 BA (Keio University), Master of Media and Governance (Keio University), Ph.D. in Management (University of California San Diego)
- 3 Visiting Assistant Professor, University of California San Diego, Affiliated Fellow, National Institute of Science and Technology Policy (NISTEP)



■ Prof.
Satoru SHIBAZAKI

- 1 Civil Law (Commercial Law, Banking Law)
- 2 Ph.D. in Law (Waseda University)
- 3 Associate Professor (Yamagata University, Dokkyo University, Waseda University), Professor (Waseda University, 2008-)



■ Assoc. Prof.
Chikae NAITO

- 1 Diversity and Inclusion, Diversity Faultlines
- 2 Doctor of Commerce (Waseda University) MS & BA (Waseda University)
- 3 NHK, Reitaku University, Musashi University



■ Prof.
Nobumasa SHIMIZU

- 1 Management Accounting, Cost Management
- 2 MA in Commerce (Waseda University)
- 3 Professor (Hosei University, Momoyama Gakuen University)



■ Prof.
Shigeru NISHIYAMA

- 1 Accounting & Corporate Finance
- 2 Ph.D. (Waseda University), MBA (University of Pennsylvania), BA (Waseda University), CPA
- 3 Deloitte Touche Tohmatsu LLC, Director or Audit & Supervisory Board Member of several companies, others



■ Prof.
Akira USUI

- 1 Accounting
- 2 Doctor of Commerce/MA/BA (Waseda University)
- 3 President of the Business Analysis Association, Councilor of Japan Accounting Association, Director of Japanese Association for International Accounting Studies, and Honorary President of the Japanese Association for Research in Disclosure



■ Prof.
Kenji SAITO

- 1 FinTech, Decentralized Finance
- 2 M.Eng in Computer Science (Cornell University), Ph.D. in Media and Governance (Keio University)
- 3 Senior Researcher, Keio Research Institute at SFC, Keio University Representative Director of Academy Camp, Vice Representative Director of Distributed Autonomous Society Forum, and Director of Shinrai Capital Foundation



■ Assoc. Prof.
Yasuhiro ARIKAWA

- 1 Economics of the Firm, Corporate Governance
- 2 MA/BA (Waseda University)



- Prof.
Hirokazu HASEGAWA
- 1 New Business Development, Venture Business, Family Business
 - 2 Ph.D. (Waseda University), BA (Chuo University)
 - 3 Global Venture Capital (Co-Founder), Nomura Research Institute, JAFCO, others



- Prof.
Akiko Ryu INNES-TAYLOR
- 1 Human Resources & Organization
 - 2 Shibaura Institute of Technology (Ph.D.), Tokushima University (BA)
 - 3 Otsuka Pharmaceutical as Senior Vice President, Mars Japan and Bluebell Japan as marketing director, President and Representative Director of Sisley Japan and Senior Vice President of Otsuka Holdings Co., Ltd.



- Prof.
Atsushi OSANAI
- 1 Technology & Innovation Management, Strategic Management
 - 2 Ph.D. (Kyoto University), MBA (University of Tsukuba), BA (Kyoto University)
 - 3 Product Strategist of Sony Corporation, Associate Professor of Kobe University, Visiting Fellow at Harvard University (2016-2017), Visiting Professor at Tunghai University (Taiwan) (2017-2018)



- Prof.
Hitoshi TAKEHARA
- 1 Asset Pricing, Portfolio Management
 - 2 Ph.D. in Management Science and Engineering (University of Tsukuba)
 - 3 Board Member of the Nippon Finance Association and the Japan Finance Association



- Assoc. Prof.
Nobuhiko HIBARA
- 1 Financial Intermediation (VC, Banking), Financing of Innovation
 - 2 Ph.D./MA (Columbia University), BA (University of Tokyo)
 - 3 Bank of Tokyo, World Bank, University of Saskatchewan (Canada), others



- Prof.
Keisuke ITO
- 1 Securities Investment
 - 2 Ph.D. (Institute of Science Tokyo), MBA (Stanford University), ME (Waseda University)
 - 3 Governor of the Government Pension Investment Fund, Director at Mizuho-DL Financial Technology, President of CFA Society of Japan, Executive Director at Nippon Finance Association, Co-Editor of Gendai Finance, Editorial Board Member of the Securities Analysts Journal.



- Prof.
Satoru SHIBUYA
- 1 Marketing, Consumer Behavior
 - 2 Faculty of Law, The University of Tokyo, MBA/ Ph.D., Keio University
 - 3 Tokyo Electric Power Company, Professor at Tohoku University, Visiting professor at the University of Rennes I, President of the Japan Association for Consumer Studies



- Prof.
Norihiko TAKEUCHI
- 1 Organizational Behavior, HR Management, Career Development
 - 2 Ph.D./MA. (Nagoya University)
 - 3 Associate Professor at Aoyama Gakuin University, President at the Association of Japanese Business Studies, others



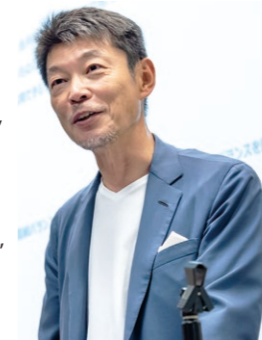
- Prof.
Keiko HONDA
- 1 Corporate Governance, Corporate Finance, Sustainable Investing
 - 2 MBA (The Wharton School, University of Pennsylvania)
 - 3 CEO of the Multilateral Investment Guarantee Agency (MIGA) of World Bank Group Senior Partner at McKinsey & Company Adjunct Professor at Columbia University's School of International and Public Affairs Adjunct Professor at Hitotsubashi University



- Prof.
Daisuke NAKAZATO
- 1 Financial Engineering, Computational Finance
 - 2 Ph.D. in Operations Research (MIT Electrical Engineering and Computer Science Dept.)
 - 3 Senior Executive Scientist, Mizuho-DL Financial Technology Co., Ltd.



- Prof.
Hiroaki SUGITA
- 1 General Management, Corporate Transformation, Market Creation
 - 2 BA (Tokyo Institute of Technology), MBA (Keio University)
 - 3 Currently Managing Director & Senior Partner of Boston Consulting Group, outside Board Member of Unicharm Corporation, and director of the Japan Association for the World Food Programme



- Assoc. Prof.
Yasukazu TAMURA
- 1 Entrepreneurship, Management Strategy
 - 2 MA (Tokyo Medical & Dental University), MA (University of Tokyo), BA (Waseda University)
 - 3 MEXT, Ministry of Economy, Trade and Industry, others



- Prof.
Tetsu HORIE
- 1 People and Organization, Global Leadership
 - 2 MBA from Nanyang Technological University (NTU), Singapore, Bachelor degree from Waseda University
 - 3 Partner at EY Japan, President of Aon Hewitt Japan, and overseeing Japanese corporate projects globally at Hay Group and Mercer



- Prof.
Naoko NEMOTO
- 1 Financial Institutions Management, Financial Markets
 - 2 Bachelor's degree in Law from Waseda University, MBA from the University of Chicago, PhD in Finance from Hitotsubashi University
 - 3 Former Managing Director at S&P Global. Economist at the Asian Development Bank Institute. Board Member of Mizuho Bank and Government Pension Investment Fund Japan



- Prof.
Masakazu SUGIURA
- 1 Management of Human Resources & Organizations
 - 2 MBA (Stanford University), BA (Kyoto University)
 - 3 Nissan Motor, Bain and Co., Mercer, Citibank, Schroders, Director of JAHRD, Head of Waseda GSL Research Institute, Director of Kunitachi College of Music



- Prof.
Konari UCHIDA
- 1 Corporate Finance and Governance
 - 2 Ph.D. in Economics from Kyushu University
 - 3 University of Kitakyushu, Kyushu University, President of Nippon Finance Association, Vice President of Asian Finance Association, Vice President of Japan Finance Association



- Prof.
Jusuke IKEGAMI
- 1 Global Management, Business Strategy, Global Leadership
 - 2 DBA (Hitotsubashi University), MBA (Judge Business School, University of Cambridge) BA (Waseda University)
 - 3 Boston Consulting Group (BCG) Tokyo office, Mars Japan, Softbank EC Holdings as a Director of New Business Development, Nissay Capital Co., Ltd.



- Prof.
Katsumasa NISHIDE
- 1 Market Microstructure, Investment Decisions
 - 2 Ph.D. in Economics from Kyoto University
 - 3 Yokohama National University, Hitotsubashi University, editorial committee of Security Analysts Journal



- Prof.
Kazunori SUZUKI
- 1 Corporate Finance, Mergers and Acquisitions
 - 2 Ph.D. in Finance (London Business School), MBA (INSEAD), LLB (University of Tokyo)
 - 3 Editorial Board Member of Security Analysts Journal, Valuation Advisor of Mizuho Bank



Admissions Information for September 2027 Enrollment

International MBA and MSc in Finance Programs, Waseda Business School

Application Schedules

1) Application with GMAT or GRE

A rolling admissions process operates for these application channels with the four key deadlines below.

Application Round	Application Deadline	Screening Result Announcement	Enrollment Procedure Deadline
1st Round	Wed., Oct. 21, 2026	Thu., Dec. 10, 2026	Fri., Jan. 8, 2027
2nd Round	Wed., Jan. 20, 2027	Thu., Mar. 4, 2027	Tue., Mar. 23, 2027
3rd Round	Wed., Mar. 31, 2027	Thu., May 13, 2027	Fri., May 28, 2027

2) Application for Family Business Successors (Only for IMBA)

This category is for applicants whose family members run their own business* and who are scheduled to succeed it in the future.

Application Round	Application Deadline	Examination Date (Interview)	Screening Result Announcement	Enrollment Procedure Deadline
Spring Round	Wed., Mar. 31, 2027	Sun., May 9, 2027	Thu., May 13, 2027	Fri., May 28, 2027

*Must be a listed company on the stock exchange or of similar standing and scale.

[Notes]

*Applicants may not apply to different programs (IMBA/MSc in Finance) within the same application round.

*Applicants may not apply to both the 3rd round of "Application with GMAT or GRE" and the spring round of "Application for Family Business Successors."

*Repeated applications are acceptable for those who were unsuccessful in an earlier round.

However, applicants who wish to apply again need to substantially improve the quality of their applications, such as GMAT (or GRE) score, TOEFL/TOEIC/IELTS, or other significant academic/professional achievements.

Screening Fee

Type of Application	Applicant's Domicile	Screening Fee
Application with GMAT or GRE	Those who live outside of Japan	15,000 JPY
	Those who live in Japan	35,000 JPY
Application for Family Business Successors	-	35,000 JPY

Tuition & Other Fees «Fees for 2027 enrollment for international MBA & MSc in Finance»

		Registration	Tuition	Student Health Promotion Mutual Aid Association Fee	Alumni Association Membership Fee	Total
1 st Year	Fall Semester (At the time of Entrance)	300,000 JPY	882,500 JPY	1,500 JPY	-	1,184,000 JPY
	Spring Semester	-	882,500 JPY	1,500 JPY	-	884,000 JPY
2 nd Year	Fall Semester	-	1,032,500 JPY	1,500 JPY	-	1,034,000 JPY
	Spring Semester	-	1,032,500 JPY	1,500 JPY	40,000 JPY	1,074,000 JPY
Total		300,000 JPY	3,830,000 JPY	6,000 JPY	40,000 JPY	4,176,000 JPY approx. 26,900 USD (Exchange rate: 1USD:155JPY)

*The Registration Fee is waived for those who are currently enrolled in, or have graduated from, completed, or withdrawn from, an undergraduate or specialized program at Waseda University. Enrollment in a non-degree program does not qualify for this waiver.

Financial Aid and Scholarships

1. Scholarship Prior to Enrollment

(Data for AY2026)

Type of Award	Name of Scholarship	Grants	Eligibility**
Waseda University Scholarships	Waseda University Partial Tuition-Waiver Scholarship	50% reduction in one-year tuition	-Privately-funded international students*
	Reserved Scholarship for Successful International Applicants	500,000 JPY per year (For 1 or 2 years)	-Privately-funded international students* who live outside Japan -Applications with GMAT or GRE are eligible

2. Scholarship After Enrollment

(Data for AY2026)

Type of Award	Name of Scholarship	Award Amount (Value)	Eligibility**
Government-sponsored Scholarships	Monbukagakusho Honors Scholarship	48,000 JPY/month	-Privately funded international students*
Waseda University Scholarships	Azusa Ono Memorial Scholarship (for international students)	Annual grant of 400,000 JPY	-Privately funded international students* -Students who are in their master's program within the standard years for a degree
	Waseda University Partial Tuition-Waiver Scholarship	50% reduction in one-year tuition	-Privately-funded international students*

**"International students" refers to those students who hold or expect to hold "Student Visa" status.

**Limits (such as income limit) may differ depending on scholarship.

We offer various scholarships after enrollment other than the above. Further information will be announced after enrollment.

Application Procedure Summary

1. Create an account on the Online Application System and log in.
TAO (<https://admissions-office.net/en/portal>)
2. Pay the screening fee.
3. Enter all necessary information and write essays.
4. Upload the required documents, including the receipt of the screening fee.

For more information

- Please visit the WBS website.
- Please visit the NTU website for information regarding the Waseda-Nanyang Double MBA.





Waseda Business School
(Graduate School of Business and Finance)



3rd Floor, Building 11, Waseda Campus
1-6-1 Nishi-Waseda, Shinjuku-ku, Tokyo, 169-8050, Japan
E-mail: wbs-admissions@list.waseda.jp

<https://www.waseda.jp/fcom/wbs/en>

