

2023

WASEDA BUSINESS SCHOOL

Graduate School of Business and Finance,
Waseda University

English-based Programs



Waseda University Graduate School of Business and Finance
早稲田大学 大学院経営管理研究科



Actionable Knowledge Unlocks Your Potential.

Mission Statement

WBS creates a dynamic learning community for all stakeholders as a catalyst for developing insightful and responsible global leaders with actionable management knowledge.

Contents

Dean's Message	4
Why Waseda Business School?	6
Coordinator's Message	8
WBS Programs	10
International MBA (IMBA)	12
IMBA Course List in 2022	14
Waseda-Nanyang Double MBA	16
Waseda-Nanyang Double MBA Course List in 2022	17
MSc in Finance	18
MSc in Finance Course List in 2022	19
Global Initiative	20
Executive Education	20
Career Development	21
Faculty	22
Admissions Information	26



Waseda Business School

Dean

Prof.
Hitoshi TAKEHARA



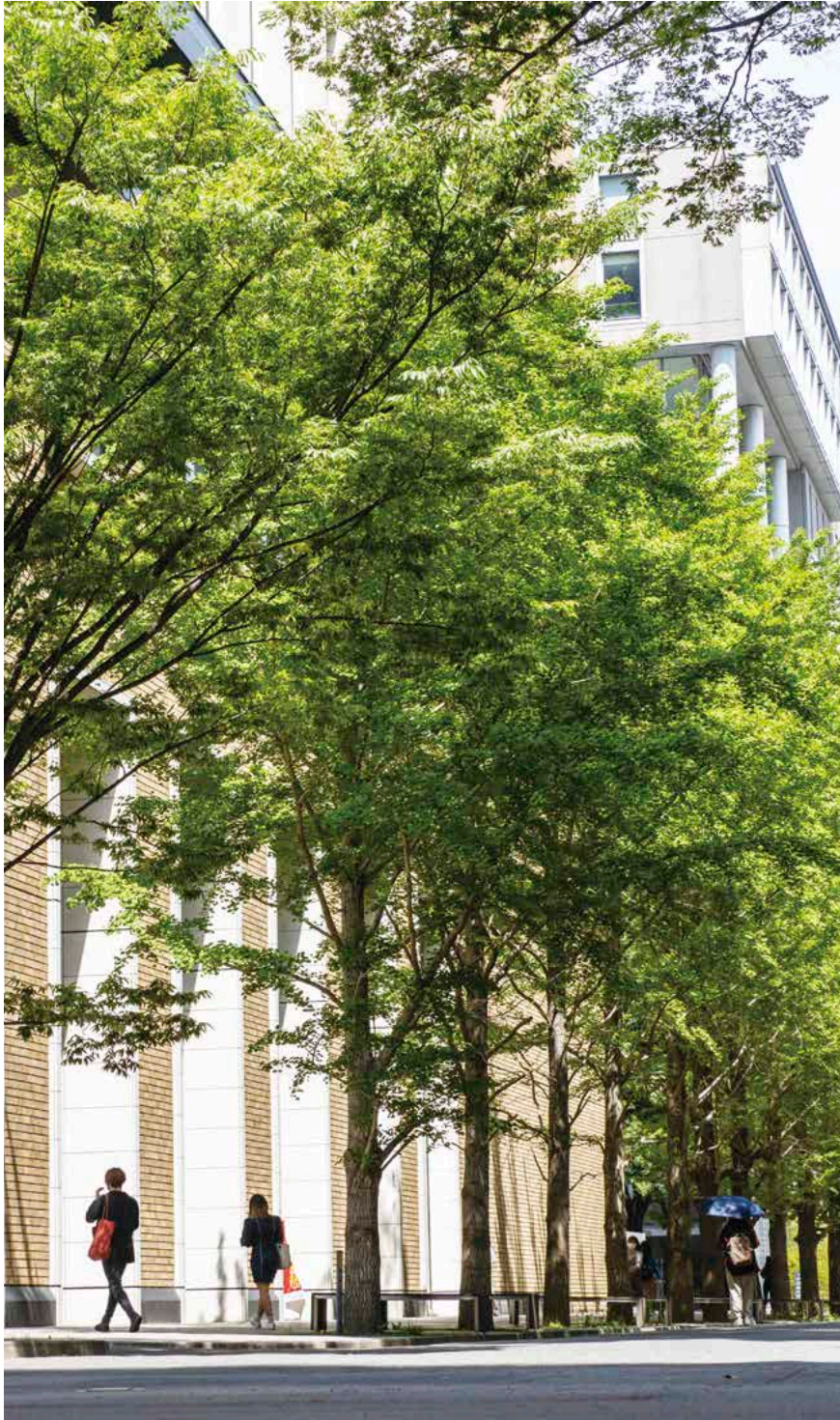
On behalf of all the faculty and staff, current students and alumni, welcome to the Waseda Business School (WBS) learning community! WBS is both uniquely Japanese and highly international. We draw students, ideas and challenges from around the world and, together, through our teaching and learning, our research and our consulting, we discover new knowledge that can be shared and applied globally. Academic as well as practical knowledge (in other words, actionable management knowledge) can be created through interactions in a learning community of diverse experiences and perspectives. Therefore, all of you are expected to create actionable knowledge.

When you join any program at WBS, in addition to your experiences on campus, you also have access to our alumni network which is well over 6,400 alumni strong, and which is joined by around 300 new graduates every year. Additionally, the global WASEDA University alumni network includes over 670,000 current members.

At WBS, we strongly believe that we have an obligation to develop the next generation of global leaders and financial professionals. Thanks to its people, facilities, and location in the heart of central Tokyo, WBS is a place with numerous opportunities for insightful and personal development. Interact with International MBA students from around the globe and Evening MBA students who are working as business managers in Japan, or study abroad at our partner schools if you like. All these options are what make your campus life rich and exciting.

We look forward to helping you take advantage of the opportunities that await you at WBS.

Actionable knowledge unlocks your potential.



Why JAPAN? Why Tokyo?

■ No. 1 Global City in Asia

Tokyo has global influence rivaling that of New York, London, or Paris, so you can experience many cutting-edge international trends (AT Kearney Global Cities Index 2021)

■ Most Hospitable City in the World

Tokyo has been ranked first for “Helpful Locals” in a TripAdvisor survey

■ A Top Student City in Asia

Tokyo has been ranked third in the Best Student Cities Ranking, in terms of education, diverse student body, student life, job-seeking opportunities and tuition expenses (QS Best Student Cities Ranking 2022)

■ From Pop and Subculture to Ancient Tradition

Japan’s literature, theater, music and cinema are the focus of attention from around the world

Why Waseda?

■ Established in 1882

Waseda is one of the oldest institutions of higher education in Japan

■ Worldwide Network of Students/Alumni

Waseda is well-known for its diversity of students (approximately 50,000 enrolled) and wide network of outstanding alumni (over 670,000) built up over 140 years of school history

■ No. 1 for Global Initiative

Waseda admits the highest number of international students (6,579 from 109 countries and territories so far) among Japanese universities and has the most students participating in study abroad programs

■ Extensive Scholarship Programs

Waseda provides over 250 different scholarships valued at more than 9.1 billion yen for 18,959 students

Why Waseda Business School?

■ One of the best Business Schools in Japan

Waseda has been ranked as the No. 1 business school in Japan by Eduniversal Best Masters Ranking 2021 (MBA full time) and as the No.2 business school in Japan by QS Global MBA Ranking 2021

■ EQUIS and AACSB-accredited School

WBS is one of only two business schools in Japan that have been accredited by both EQUIS and AACSB

■ Dynamic Student Diversity

Students experience culturally diverse discussions and networking with future international business leaders

■ Top-class Faculty

You are promised well-rounded learning from faculty members with both high academic standards and extensive practical experience

■ Rich Variety of Programs

To meet the needs of today’s business and finance sectors around the world, WBS offers a total of seven programs; three of which are conducted in English



International MBA Program

Coordinator

Prof.
Norihiko TAKEUCHI

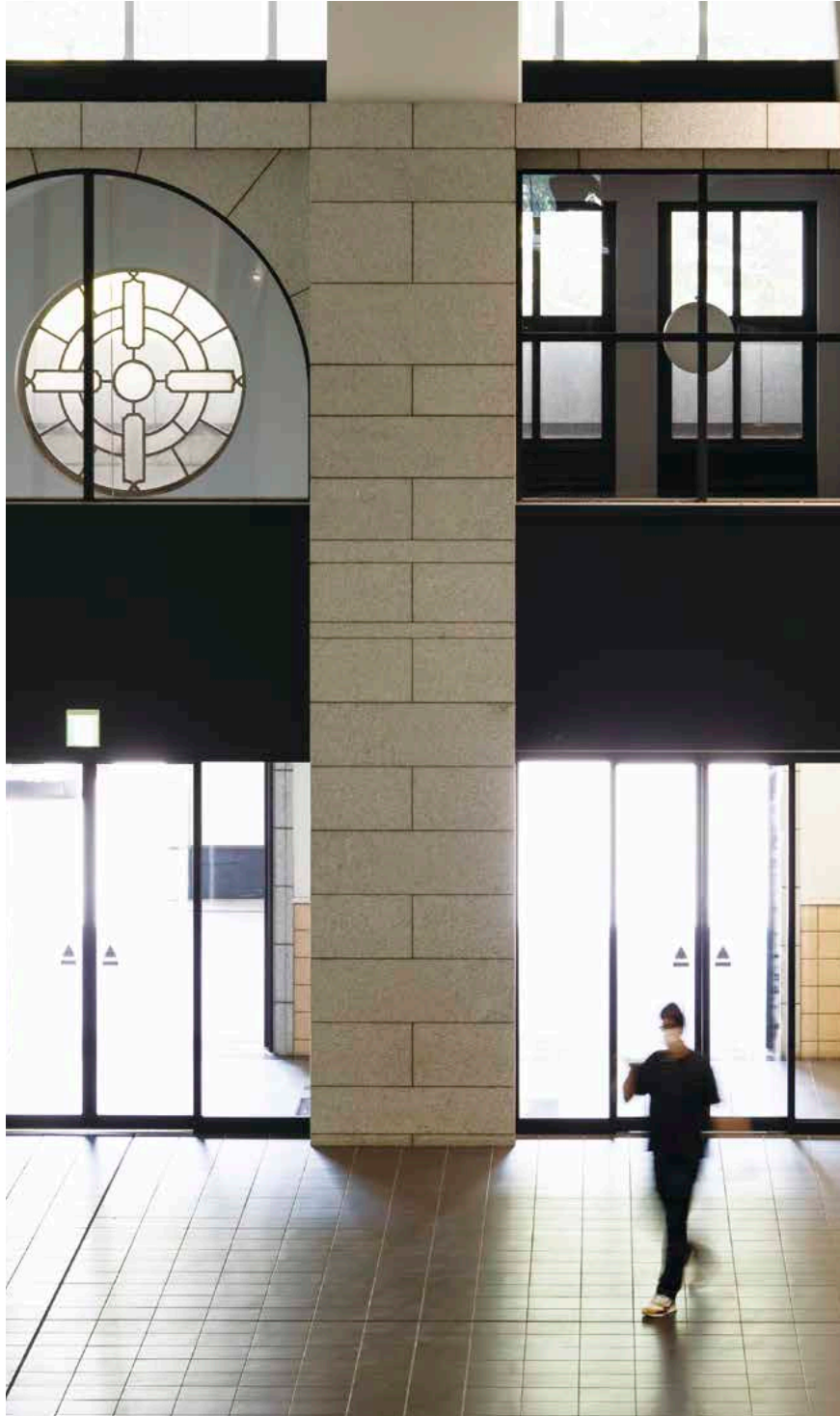


Thank you for considering applying to the International MBA program at Waseda Business School! Our school is one of the top emerging business schools globally, which is reflected in our 2021 ranking (WBS is ranked No. 1 in Japan by Eduniversal Best Masters Ranking). The International MBA program is our flagship program. We annually welcome about 50-60 talented students from around 25 countries.

Our program offers great and unique opportunities for you, all of which follow our three core visions. First, we emphasize “Actionable Knowledge.” We believe knowledge must be acted upon in practice. For this reason, we have many faculty members who have an amazing wealth of practical experience. Second, we foster “Community-Based Learning.” We have a unique “Zemi” system, in which you have deep one-on-one communication with professors.

Third, we seek to develop “Global Leaders.” As mentioned above, we have a highly diversified body of students, and you will have many opportunities to mingle with them and even with Japanese Evening MBA students (many of whom are currently working for leading Japanese companies).

Finally, WBS will do its very best to support your smooth transition to MBA life, both physically and virtually. Overall, our International MBA program offers an amazing set of opportunities for you to develop and inspire yourself. I hope I can see you on the WBS campus quite soon!



WBS Programs

WBS offers seven programs that cater to the needs of today's business and finance sectors in Japan and across the globe.

English-based programs

■ International MBA

Degree:	Master of Business Administration
Admission Method:	Application with GMAT or GRE Application for Family Business Successors
Duration:	2 years
Annual Intake:	45
Enrollment	September

■ Waseda-Nanyang Double MBA

Degree:	Master of Business Administration, Waseda University Master of Business Administration, Nanyang Technological University
Admission Method:	Application with GMAT or GRE
Duration:	14 months
Annual Intake:	Approx. 10
Enrollment	July

■ MSc in Finance

Degree:	Master of Science in Finance
Admission Method:	Application with GMAT or GRE Application for Company Sponsored Applicants
Duration:	2 years
Annual Intake:	20
Enrollment	September

Japanese-based programs (April Enrollment)

■ International MBA

Duration:	2 years
Annual Intake:	25

■ Evening MBA (General)

Duration:	2 years
Annual Intake:	70

■ One-year MBA

Duration:	1 year
Annual Intake:	20

■ Evening MBA (Specialized)

Duration:	2 years
Annual Intake:	70

WBS has received high acclaim from international university evaluation institutions, and will continue to develop as a high-ranking business school, both domestically and globally.



Eduniversal Best Masters Ranking 2021 (MBA full time): No. 1 in Japan, No. 4 in Far East Asia
QS Global MBA Rankings 2021: No. 2 in Japan, No.19 in Asia

Schedule for Lectures

- International MBA (English, Japanese)
- Waseda-Nanyang Double MBA
- MSc in Finance
- One-year MBA

Period		Time
1st	(100 mins)	8:50–10:30
2nd	(100 mins)	10:40–12:20
3rd	(100 mins)	13:10–14:50
4th	(100 mins)	15:05–16:45
5th	(100 mins)	17:00–18:40
6th	(100 mins)	18:55–20:35
7th	(50 mins)	20:45–21:35

■ Evening MBA (General, Specialized)

Period		Time
Evening 7th	(100 mins)	18:30–20:10
Evening 8th	(100 mins)	20:20–22:00

*Class hours will change starting in 2023.

Evening 7th and Evening 8th periods are offered on Monday - Friday.

English based courses are not available in Evening 7th and Evening 8th periods.



Molding business leaders who can thrive in the global era

International MBA (IMBA)

- Full-time, 2-year program
- Bilingual courses conducted in English and Japanese
Language acquisition courses also offered
- Faculty-coordinated in-class interaction between
Japanese-based and English-based students
- Abundant study-abroad opportunities

The IMBA has designed a flexible curriculum that provides students with a solid foundation in business fundamentals while allowing them the freedom to pursue courses that align with their career strategies in global business fields.



Zemi (Seminar)

Unique to the WBS Program is the system of Zemi (seminars). Supervised by a professor, students remain in the Zemi groups throughout their enrollment, bonding with peers possessing similar research interests through interactive, discussion-based classwork. In addition to class endeavors, this small unit goes out for fieldwork and extracurricular activities, interacting with other Zemi and alumni. In their Zemi, students gain the skills and methodology to conduct research, deepen their academic professional insights, and improve rational problem-solving techniques. An MBA Degree Thesis is the capstone of academic work in the program.

Seminars scheduled to be open in the 2023 academic year (Subject to change)

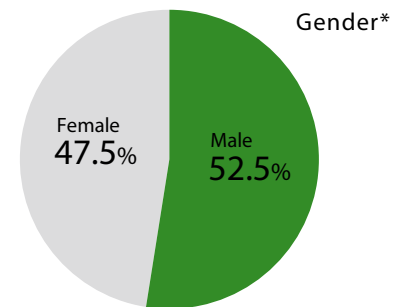
Seminar Title	Faculty in Charge
Management Strategy and Industry Evolution	Shigeru ASABA
Risk Management	Ming Yan William CHEUNG
Firm growth, innovation and industry dynamics	Alex COAD
Entrepreneurship and Entrepreneurial Leadership	Hironori HIGASHIDE
Designing Incentives in Markets and Organizations	Hideshi ITOH
Strategic Marketing and Management	Tatsuya KIMURA
Power of Financial Numbers	David LAU
Innovation and Entrepreneurship	Kanetaka MAKI
Luxury Branding	Shinya NAGASAWA
Enterprise Value	Shigeru NISHIYAMA
Innovation Strategy in Japan	Atsushi OSANAI
Financial Law and Practice	Satoru SHIBAZAKI
Consumer Behavior in the Digital Environment	Satoru SHIBUYA
Business Strategy and Management Accounting	Nobumasa SHIMIZU
Organizational Behavior	Norihiko TAKEUCHI
Economic Analysis of Accounting Institutions	Akira USUI

Overview
Video

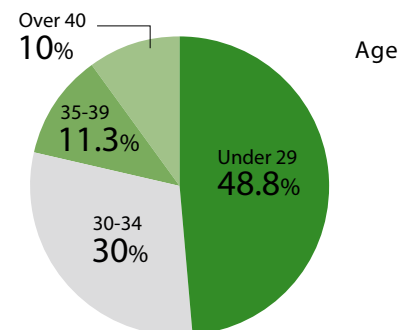


Student Demographics

As of May 2022



*Data based on family registers



Country/Region

Brunei	Philippines
Canada	Republic of Korea
China	Singapore
Cote d'Ivoire	Sri Lanka
Hong Kong	Taiwan
India	Thailand
Indonesia	Tunisia
Japan	Uganda
Morocco	United States
Peru	Vietnam

Waseda-ESCP Double Degree Agreement for IMBA Students

- Students study at both WBS and ESCP (Paris)
- Students obtain two degrees: Master of Business Administration, Waseda University and Master in Management Grande Ecole, ESCP Europe
- Application is made through the home school followed by joint screening by the two institutions during enrollment



IMBA Course List in 2022

As of July 2022

Compulsory Core Courses

Marketing
Financial Accounting
Finance
Management of People and Organizations
Corporate and Business Strategy
General Management
Global Management

Elective Core Courses

Business Data Analysis
Managerial Accounting
Economics for Business Administration
Entrepreneurship
Technology & Operations Management

Elective Courses (As an example)

■ General Management & Strategy

Strategic Service Management
Strategy of eBusiness
Turnaround Management
Japanese Management
Growth Strategy & Creation of Sustainable Business
Management Game
Problem Solving from General Management Perspective
Business Law
Strategy & Design Thinking
GOTO Bilingual Workshop (offered in collaboration with
Saïd Business School, Oxford University) (Bilingual)
Management Dilemma: Case Discussions in
English and Japanese (Bilingual)
ICT Driven Business Strategy in the US and Japan (Bilingual)
Dialogue with Top Entrepreneurs in Japan
Corporate Strategy in Practice
DATA SCIENCE FOR MANAGEMENT

■ Accounting

Management Control System for the Global Companies in
the Era of Asia: Strategic Perspectives

■ Marketing

Consumer Behavior
Marketing and Social Innovation

■ Global Business

Cross-Cultural Management

■ MOT

Technology Strategy and Management
Strategic IT Management
Operation Management
Venture Capital Formation

Student Testimonial



WBS Teaches You How to Be Bold

I chose WBS because of Waseda University's sterling reputation and the desire to learn business from the perspective of the Japanese market. My first six months in the program have brought me new insights in fields like finance, accounting, and management, all things I had encountered in the workplace but never properly studied. More importantly, however, WBS teaches its students to have the courage to experiment and take risks, providing them the tools to analyze results and leverage them in the future. Thanks to my courses and seminars, I find myself making more confident decisions based on logical reasoning and real-world knowledge. I know that with a WBS degree I am well on my way to a successful career in Japan.

Brendon Ross Pritchard From: United States

■ Finance

Corporate Valuation
Securities Market
Derivatives Modeling
Market Microstructure
Real Estate Finance
Management of Financial Institutions
Corporate Finance
Corporate Governance
Mathematical Finance
Mathematics of Finance
Equity Investments
Asset Allocation
Asset Pricing
Microeconomics
Advanced Microeconomics
Risk Management
Derivatives, Exotic Options and Insurance
Statistics
Sports Finance: An Introduction
Time Series Analysis
Financial Econometrics
Financial Instruments
Fixed Income Investments
Fin Tech-Financial Innovation and the Internet
Theory of Accounting Choice
Risk Analysis
ECONOMETRICS
Applied Corporate Finance
Business Ethics for Financial Professionals
Behavioral Finance for Individuals

■ HR Management and Organizational Behavior

Leadership in Business Settings
Strategic Human Resource Management
Transnational Leader in the Era of Transformation
Human Behavior in Organizations
Organizational Strategy of Japanese Companies in Asia
Organizational Psychology

■ Entrepreneurship

How to Globalize Family Businesses (Bilingual)
Family Business Management A: Theory and
Family Business Plan Development (Bilingual)

■ Research Methods and Logical Thinking

Creative Process and Ethics for Business (Bilingual)

(Bilingual Courses)

■ Research Methods and Logical Thinking

Creative Process and Ethics for Business

■ Entrepreneurship

How to Globalize Family Businesses
Family Business Management A: Theory and
Family Business Plan Development

■ General Management and Strategy

GOTO Bilingual Workshop (offered in collaboration with
Saïd Business School, Oxford University)
Management Dilemma: Case Discussions in
English and Japanese
ICT Driven Business Strategy in the United States and Japan

Student Testimonial



Why Japan? & What Is Exciting about Having an MBA at Waseda Business School

I grew up at a time when 'Made in Japan' products such as televisions, phones, and motor vehicles, among other things brands like Toyota, Sony, Panasonic, Toshiba, and Sharp were household names in Uganda. This ignited my interest in Japan as a country; I wanted to understand further the reasons behind Japanese brands' success on the global business stage. At Waseda Business School, I have learned about the development of new technology and experimentation, which has helped me expand my way of thinking. Associate Professor Kenetaka MAKI organized a research tour to Kyotango City. We visited several start-ups and other innovative companies, such as Xcom Global at Shibuya and King Skyfront at Kawasaki, which deepened my understanding of my specialized Zemi(seminar) under "Entrepreneurship and Innovation". The trip to Kyotango City was a memorable experience.

Immaculate Kobutetsi From: Uganda

Fostering dynamic global leaders through combined studies in Singapore and Tokyo

Waseda-Nanyang Double MBA

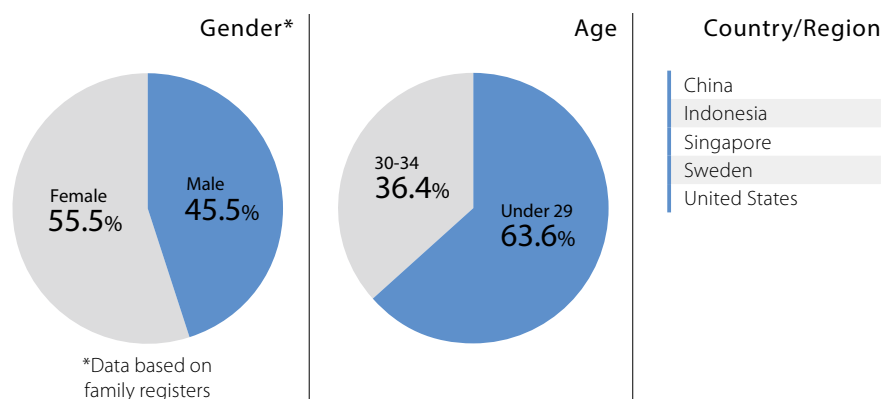
- Students obtain two MBA degrees in an intensive program of study
- Full-time, 14-month program
- Conducted in Singapore and Japan to combine the strengths of two top business schools in Asia
- In addition to earning two MBA degrees, students will belong to two growing global alumni networks of distinguished leaders



Trimester 1 (Late July – October)	Trimester 2 (November – February)	Trimester 3 (April – August)
Mainly core courses and “Leading People Globally” module at Nanyang Technological University		Specialized courses, seminar, research and dissertation at Waseda University

Student Demographics

As of May 2022



Waseda-Nanyang Double MBA Course List in 2022 As of May 2022

WBS Courses

■ Core Courses

General Management

■ Specialized Courses

Organizational Strategies of Japanese Companies in Asia
Life Sciences: A Business Perspective
Operations Management
Technology Strategy and Management
Technology & Operations Management
Problem Solving from General Management Perspective
Securities Market
Japanese Management
Strategic Service Management
Human Resource Development of Global Business Leader
Innovation Management
Entertainment Business Strategy
Strategic IT Management

■ Specialized Research & Paper

Japan Industry Studies

NBS Courses

■ Core Courses

Finance
Accounting
Marketing
Technology & e-Business
Economics and Markets
Strategic Management
Analytics for Decision Making
Corporate Governance and Ethics

■ Specialized Courses

Entrepreneurship
Supply Chain Management (half course)

■ Leadership Development module

Leading People Globally

Tuition

	Entrance fee	Tuition	Other fees	Total
Cost	10,000	56,340. ^{SG}	522. ^{SG}	66,862. ^{SG}

*Singapore dollars

*Includes GST. Residential and living expenses in Singapore and Japan are not included.

(Ref: NBS dorm S\$400 and up)

Overview
Video



Website



Student Testimonial



A Self-Discovery Journey During Uncertain Times

I joined DMBA program because I want to know my true self and my inner motivation. Discovering who I am is important to me because it decides who I will be tomorrow. Thanks to the MBA professors, career coach and career services support, I know better about my aspiration. With practice, passion, and curiosity, I achieved a complete career switch with the help from DMBA and my classmates. Although the Waseda courses were conducted online, I learned to cope with uncertainties and make use of online resources. In DMBA, I found passion, career and friendship, which will support me throughout my life.

Liuyi Xue From: Singapore

*Online classes are temporary measure for those who can not enter Japan due to COVID-19.

Cultivating global financial professionals in Japan

MSc in Finance

- The only program of its kind offered in Japan
- Full-time, 2-year program
- International learning environment

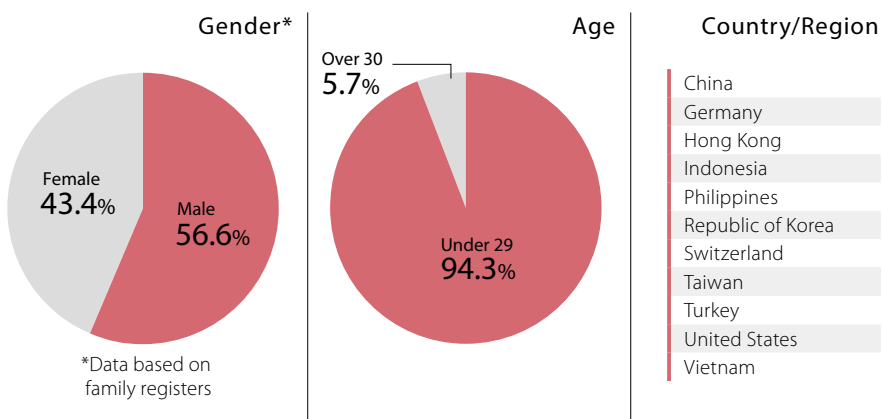
The Master of Science in Finance program is an English-based program to develop successful financial professionals. Responding to modern needs, specialist fields on offer include: Corporate Finance, Investment and Personal Finance, Wealth Management, Internet Finance, and Real Estate and Infrastructure. The curriculum is designed to offer flexible study supporting students in becoming either highly specialized professionals or research academics in their respective fields.

*Work experience is not required for application.



Student Demographics

As of May 2022



MSc in Finance Course List in 2022

As of July 2022

Compulsory Core Courses

Microeconomics
Equity Investments
Corporate Finance
Fixed Income Investments
Mathematics for Finance
Statistics
Financial Econometrics
Econometrics

Seminars

Economics
Risk Management
Hot Papers in Finance
Financial Economics
Real Estate/Finance/Data Science
Accounting and Finance
Applied Mathematical Finance
Topics in Financial Markets/ESG/SDGs
Portfolio Management
Behavioral Finance
Financing of Innovation

Elective Core Courses

Derivatives Modeling
Market Microstructure
Financial Econometrics
Real Estate Finance
Management of Financial Institutions
Corporate Governance
Mathematical Finance
Asset Allocation
Asset Pricing
Advanced Microeconomics
Theory of Accounting Choice
Advanced Risk Management
Derivatives, Exotic Options and Insurance
Risk Analysis

Elective Courses

Sports Finance: An Introduction
Behavioral Finance for Individuals
Applied Corporate Finance

*It is possible to take up to 5 courses from
IMBA Elective Core Courses or Elective Courses.

Overview
Video



Student Testimonial



A Global Program for Global Thinkers

Growing up in the 90s, the word "global" was once an abstract concept, too difficult to grasp. However, today's society has transformed the word global into a tangible concept that has effects on our daily lives. The continued shift towards global awareness in my lifetime was a key consideration when selecting the MSc in Finance program at Waseda Business School. A technical education in finance is already a unique path for a business student to take, focusing on the mechanical and mathematical workings of commerce and markets. Additionally, the instruction, which provides a global and Asian markets perspective challenges students to think about the unique factors that construct a global network of trade. WBS provides more than learning, it provides academic mastery by weaving a tapestry of students with diverse backgrounds and allowing them to collaborate by exploring novel themes and unique ideas.

Richard Reynolds From: United States

Global Initiative

Prestigious academic partners leverage a worldwide network

In addition to learning in a global environment where people from all over the world gather, students can also enjoy opportunities to study abroad through WBS's extensive network, which connects them with 37 leading institutions around the world (see list below).

Various study abroad opportunities include:

Partner institutions

- Semester-exchanges
- Summer/Spring intensive programs

Europe

EMLYON Business School
 ESCP (École Supérieure de Commerce de Paris) Europe Business School
 EDHEC (École des hautes études commerciales du Nord) Business School
 Copenhagen Business School
 Solvay Brussels School of Economics and Management (SBS-EM), Université Libre de Bruxelles
 University of St. Gallen
 Mannheim Business School, University of Mannheim
 Rotterdam School of Management, Erasmus University
 ESSEC Business School
 Collier School of Management, Tel Aviv University

Asia / Oceania

College of Management, National Taiwan University
 College of Commerce, National Chengchi University
 School of Economics and Management, Tsinghua University
 China Europe International Business School (CEIBS)
 Guanghua School of Management, Peking University
 Antai College of Economics & Management, Shanghai Jiao Tong University
 School of Management, Zhejiang University
 School of Economics, Zhejiang University
 The Chinese University of Hong Kong Business School
 Korea University Business School
 School of Business, Yonsei University
 Indian Institute of Management, Ahmedabad (IIMA)
 Indian Institute of Management Bangalore (IIMB)
 Nanyang Business School, Nanyang Technological University
 Faculty of Business and Economics, Monash University
 Singapore Management University
 Sasin Graduate Institute of Business Administration of Chulalongkorn University
 National Taiwan University of Science and Technology
 Thammasat Business School, Thammasat University

North America

Peter F. Drucker and Masatoshi Ito Graduate School of Management, Claremont Graduate University
 John E. Anderson Graduate School of Management, University of California, Los Angeles
 International Business School, Brandeis University
 Stephen J.R. Smith School of Business, Queen's University
 Shilder College of Business, The University of Hawaii at Manoa
 College of Business Administration, University of Missouri, St. Louis
 University of Southern California, Marshall School of Business
 Kelley School of Business, Indiana University

Executive Education

Programs on offer for top management to junior leaders

Executive education is conducted by the Institute for Business and Finance, in close connection with WBS.

Hosting tailor-made courses with world-renowned companies and business schools

A growing number of major companies and leading universities are choosing to partner with Waseda Business School to deliver their own executive programs and develop the next generation of global business leaders.



Executive courses for Japan's business leaders

A variety of courses are offered for top executives, middle managers, and young business leaders as modules and/or customized staff development programs for individual companies.



Please contact the Institute for Business and Finance for more information: wibf@list.waseda.jp

Career Development

The WBS experience maximizes talent and potential

The Waseda Business School Career Management Center offers comprehensive career support services exclusive to WBS students. Its service covers providing internship/job opportunity information, career guidance seminars, career development & job-hunting preparation workshops, as well as individual career counseling.

In addition, WBS students have opportunities to obtain corporate briefing & career opening updates directly from corporate representatives during WBS on-campus seminars.

WBS supports international students in realizing their vision.



On-Campus Career Seminars & Networking Events

- Career guidance for fresh graduates & mid career recruitment
(recruitment process, job search, resume & entry sheets writing, interviews and networking, etc.)
- International students and alumni networking
- Japanese business culture & etiquette seminar
- Japanese conversation lounge (International students and Japanese students networking)

Recent On-Campus Corporate Seminars:

Amazon Japan G.K.	Lenovo	Nomura Securities
British American Tobacco	Linkedin	Richemont Japan Limited
Chiba Bank	Microsoft	Wipro
Google LLC	Monitor Deloitte	World Bank & International Finance Corporation
IQVIA	Nomura Asset Management	The Yokohama Rubber

Companies from which WBS graduates have received job offers in recent years

Audit, Advisory & Consulting

Accenture Japan Ltd	Monitor Deloitte (Indonesia)
Deloitte Tohmatsu Consulting LLC	Nomura Research Institute, Ltd.
DKSH Japan K.K.	Mazars Audit LLC
EY Strategy and Consulting Co., Ltd.	PricewaterhouseCoopers Aarata LLC
KPMG Consulting Co., Ltd.	PwC Consulting LLC
Mars & Co	Revamp Corporation
Mercer Japan Ltd.	

Finance

Asset Management One Co., Ltd.	Nomura Securities Co., Ltd
BlackRock Japan Co., Ltd.	SBI Holdings, Inc.
Citic Securities Co., Ltd.	Standard Chartered Bank (China) Limited
Mizuho Financial Group, Inc.	Sumitomo Mitsui Trust Bank, Limited
Morgan Stanley MUFG Securities Co., Ltd.	The Tokyo Star Bank, Limited
Nippon Life Insurance Company	UBS Securities Japan Co., Ltd.
Nomura Asset Management Co., Ltd.	Zurich Insurance Company Ltd

IT

Amazon	HENNGE K.K.	Nextremer Co., Ltd.
ARM Ltd	Lenovo Japan Ltd.	Softbank Corp.

FMCG

British American Tobacco Japan, Ltd.
Danone Japan Co., Ltd.
Johnson Company, Limited
Kikkoman Corporation
Nichirei Foods Inc.
NIHON L'ORÉAL K.K.

Automotive

Mitsubishi Fuso Truck and Bus Corporation
PABCO Co., Ltd.

Media & Entertainment

Bloomberg L.P.
ByteDance Ltd.
Konami Holdings Corporation
SEGA Corporation
Sony Interactive Entertainment Inc.

Faculty

■ Faculty in charge of IMBA

■ Faculty in charge of other programs

1 Area(s) of Specialization,

2 Educational Pedigree (School, Degree),

3 Previous Experience & External Positions

*Faculty on Sabbatical in 2022 may continue in 2023

■ Prof.
Koji AIBA

- 1 Management Strategy and General Management
- 2 MBA (Harvard University); LLB (University of Tokyo)
- 3 Experienced Boston Consulting Group Partner, Director of Board Seiyu Corp, Dream Incubator, Japan Association for CEOs



■ Prof.
Shigeru ASABA

- 1 Corporate Strategy, Business Strategy
- 2 Ph.D. (UCLA); Ph.D./MA/BA (University of Tokyo)
- 3 Gakushuin University, President at the Academic Association for Organizational Science, Board Member of Nippon Beet Sugar Manufacturing, and Oki Electric Industry.



■ Assoc. Prof.
Ming Yan William CHEUNG

- 1 Market Liquidity, Real Estate Investment Trusts, Behavioral Economics Corporate Finance
- 2 B.Sc. & M.Phil. in Mathematics (University of Hong Kong), Ph.D. in Finance (University of Hong Kong)
- 3 Member of European Corporate Governance Institute, University of Vienna, University of Macau



■ Prof.
Alex COAD

- 1 Firm growth, firm performance, innovation, entrepreneurship
- 2 Ph.D., M.Sc., Economics, (Paris 1, France). B.A., Economics, (HEC Lausanne, Switzerland)
- 3 Previously at the European Commission. External consultant at the OECD and World Bank. Editor: Research Policy. Editor: Small Business Economics.



■ Prof.
Hironori HIGASHIDE

- 1 Entrepreneurship, Creative Process, Humanity-Centred Management
- 2 Ph.D./MBA/DIC (Imperial College, London); BA in Economics (Keio University)
- 3 WERU Investment Co Ltd. (Director), CIESF (Councilor: Cambodia International Education Support Foundation)



■ Prof. (Sabbatical year in 2022)
Akie IRIYAMA

- 1 Strategic Management, International Business
- 2 Ph.D. (University of Pittsburgh); MA/BA (Keio University)
- 3 Asst. Prof. at State University of NY (SUNY) Buffalo, Business Consultant at Mitsubishi Research Institute, Board Member of Macromill, Inc.



■ Prof.
Hideshi ITOH

- 1 Organizational Economics, Contract Theory
- 2 BA/MA (Hitotsubashi University), Ph.D. in Decision Sciences (Graduate School of Business, Stanford University)
- 3 Kyoto University, Osaka University, Hitotsubashi University. President of the Japanese Economic Association (2022-2023)



■ Prof. (Sabbatical year in 2023)
Hiroshi KANNO

- 1 General Management, Strategy in Practice
- 2 MA in Engineering (Tokyo Institute of Technology); MA in Industrial Administration (Carnegie Mellon University)
- 3 Partner at the Boston Consulting Group until 2008. Now serving as a Board Member/Auditor for several companies.



■ Prof. (Sabbatical year in 2023)
Tomoko KAWAKAMI

- 1 Marketing
- 2 Ph.D. (Kobe University); MA/BA (Osaka University)
- 3 Kansai University, Affiliate Professor of University of Washington, Editorial Review Board of Journal of Product Innovation Management, Outsider Director of Takara Holdings Inc.



■ Prof.
Tatsuya KIMURA

- 1 Marketing Management
- 2 Ph.D. (Waseda University); MBA (Lancaster University, UK); BA (Waseda University)
- 3 Brand Management & Marketing Management experience in various Japanese, American and British companies, Board member of Septeni Holdings



- Assoc. Prof.
David LAU
- 1 Voluntary Disclosure, Auditing, Corporate Governance
 - 2 BCom, BCom (Hons, 1st Class) & PhD in Accounting (University of Auckland Business School)
 - 3 Full member of Chartered Accountants Australia and New Zealand



- Prof.
Satoru SHIBAZAKI
- 1 Civil Law
(Commercial Law, Banking Law)
 - 2 Ph.D. in Law (Waseda University)
 - 3 Associate Professor (Yamagata University, Dokkyo University, Waseda University); Professor (Waseda University, 2008-)



- Assoc. Prof.
Kanetaka MAKI
- 1 Technology Management, Innovation & Entrepreneurship, Science Policy
 - 2 BA (Keio University), Master of Media and Governance (Keio University), Ph.D. in Management (University of California San Diego)
 - 3 Visiting Assistant Professor, University of California San Diego, Affiliated Fellow, National Institute of Science and Technology Policy (NISTEP)



- Prof.
Satoru SHIBUYA
- 1 Marketing, Consumer Behavior
 - 2 Faculty of Law, The University of Tokyo, MBA/ Ph.D., Keio University.
 - 3 Tokyo Electric Power Company, Professor at Tohoku University, Visiting professor at the University of Rennes I, President of the Japan Association for Consumer Studies



- Prof.
Shinya NAGASAWA
- 1 Design and Brand Innovation Management
 - 2 D.Eng / M.Eng / B.Eng. (Waseda University)
 - 3 Visiting Professor at ESSEC Business School, SciencesPo. Paris, Ritsumeikan APU, President of the Association of Product Development & Management, former Vice President of the Japan Society of Kansei Engineering



- Prof.
Nobumasa SHIMIZU
- 1 Management Accounting, Cost Management
 - 2 MA in Commerce (Waseda University)
 - 3 Professor (Hosei University, Momoyama Gakuen University)



- Prof.
Shigeru NISHIYAMA
- 1 Accounting & Corporate Finance
 - 2 Ph.D. (Waseda University); MBA (University of Pennsylvania); BA (Waseda University); CPA
 - 3 Deloitte Touche Tohmatsu LLC, Director or Audit & Supervisory Board Member of several companies, others.



- Prof.
Norihiko TAKEUCHI
- 1 Organizational Behavior, HR Management, Career Development
 - 2 Ph.D./MA. (Nagoya University)
 - 3 Associate Professor at Aoyama Gakuin University, President at the Association of Japanese Business Studies, others.



- Prof.
Reiji OHTAKI
- 1 Global Leadership, Global Organization & Human Capital Management
 - 2 Ph.D./MS (UC San Diego); BS (Tohoku University)
 - 3 Toshiba, Head of Asia Region at Hay Group and Mercer, Singapore EDB External Board Director, President and Chief Executive Officer at AON Hewitt



- Prof.
Akira USUI
- 1 Accounting
 - 2 Doctor of Commerce/MA/BA (Waseda University)
 - 3 President of the Business Analysis Association, Councilor of Japan Accounting Association, Director of Japanese Association for International Accounting Studies, and Honorary President of the Japanese Association for Research in Disclosure



- Prof.
Atsushi OSANAI
- 1 Technology & Innovation Management, Strategic Management
 - 2 Ph.D. (Kyoto University); MBA (University of Tsukuba); BA (Kyoto University)
 - 3 Product Strategist of Sony Corporation, Associate Professor of Kobe University, Visiting Fellow at Harvard University (2016-2017), Visiting Professor at Tunghai University (Taiwan)(2017-2018)



Faculty

■ Faculty in charge of IMBA

■ Faculty in charge of other Programs

1 Area(s) of Specialization,

2 Educational Pedigree (School, Degree),

3 Previous Experience & External Positions

■ Assoc. Prof.
Yasuhiro ARIKAWA

1 Economics of the Firm,
Corporate Governance

2 MA/BA (Waseda University)



■ Prof.
Jusuke IKEGAMI

1 Global Management, Business
Strategy, Global Leadership

2 DBA (Hitotsubashi University);
MBA (Judge Business School,
University of Cambridge)

3 Boston Consulting Group (BCG)
Tokyo office, MARS Japan, Softbank EC
Holdings as a Director of New Business
Development, Nissay Capital Co. Ltd.



■ Prof.
Hirokazu HASEGAWA

1 New Business Development,
Venture Business, Family Business

2 Ph.D. (Waseda University);
BA (Chuo University)

3 Global Venture Capital (Co-Founder),
Nomura Research Institute, JAFCO,
others.



■ Prof.
Yuichiro KAWAGUCHI

1 Real Estate (Business & Finance),
Real Option

2 National Defense Academy;
Dr. in Engineering (University of Tokyo)

3 Asian Real Estate Society, a Board
Member
The Japanese Association of
Real Estate Financial Engineering,
Director



■ Assoc. Prof.
Nobuhiko HIBARA

1 Financial Intermediation (VC, Banking),
Financing of Innovation

2 Ph.D./MA (Columbia University);
BA (University of Tokyo)

3 Bank of Tokyo, World Bank,
University of Saskatchewan (Canada),
others.



■ Prof.
Satoshi KOMIYAMA

1 Financial Accounting,
International Accounting

2 BBA (Hitotsubashi University)

3 Audit Partner of KPMG AZSA LLC,
Deputy President of the Japanese
Institute of CPAs



■ Prof.
Masao HIRANO

1 Globalization,
Corporate Strategy, M&A

2 Ph.D./MSE (University of Tokyo);
MSE (Stanford University)

3 McKinsey & Co., Carlyle Group, others.



■ Prof.
Daisuke NAKAZATO

1 Financial Engineering,
Computational Finance

2 Ph.D. in Operations Research
(MIT Electrical Engineering
and Computer Science Dept.)

3 Senior Executive Scientist, Mizuho-
DL Financial Technology Co.Ltd.



■ Prof.
Masayuki IKEDA

1 Financial Economics, Asset Pricing

2 Ph.D. (Tokyo Institute of Technology);
BA (University of Tokyo)

3 Professor at Aoyama Gakuin
University and Hitotsubashi University



■ Prof.
Naoko NEMOTO

1 Financial Institutions Management,
Financial Markets

2 Bachelor's degree in Law from Waseda
University. MBA from the University of Chicago.
PhD in Finance from Hitotsubashi University.

3 Former Managing Director at S&P Global.
Economist at the Asian Development Bank
Institute. Board Member of Mizuho Bank and
Government Pension Investment Fund Japan.



Prof.

Kenji SAITO

- 1 FinTech, Decentralized Finance
- 2 M.Eng in Computer Science (Cornell University), Ph.D. in Media and Governance (Keio University)
- 3 Senior Researcher, Keio Research Institute at SFC, Keio University, Representative Director, Beyond Blockchain, Representative Director, Academy Camp



Prof.

Jun UNO

- 1 Market Microstructure, Market Liquidity
- 2 BA (Waseda University)
- 3 Ca'Foscari University of Venice Visiting Researcher (2013-2016), Research Fellow of the Center for Financial Studies (CFS), Germany, Visiting Researcher, Institute for Monetary and Economic Studies, Bank of Japan



Prof.

Hiroaki SUGITA

- 1 General Management, Corporate Transformation, Market Creation
- 2 BA (Tokyo Institute of Technology) MBA (Keio University)
- 3 Currently Managing Director & Senior Partner of Boston Consulting Group, outside Board Member of Unicharm Corporation and director of the Japan Association for the World Food Programme.



Prof.

Hideo YAMADA

- 1 Competitive Strategy, Business Models
- 2 Ph.D. (Waseda University); MBA (Keio University)
- 3 Management Consultant at Mitsubishi Research Institute, Audit & Supervisory Board Member of Astellas Pharma, NEC, Fukuoka Financial Group and Suntory Holdings



Prof.

Masakazu SUGIURA

- 1 Management of Human Resources & Organizations
- 2 MBA (Stanford University); BA (Kyoto University)
- 3 Nissan Motor, Bain and Co., Mercer, Citibank, Schroders, Director of JAHRD, Head of Waseda GSL Research Institute, Director of Kunitachi College of Music



Prof.

Katsunari YAMAGUCHI

- 1 Investment, Behavioral Finance
- 2 B.A.(Hitotsubashi Univ.), MPPM(Yale School of Management), Ph.D (Senshu Univ. Graduate School of Economics)
- 3 Director and Chairman, Ibbotson Associates Japan, Inc., He served over years as board or committee member for Nippon Finance Association, CFA Society of Japan, Security Analysts Association of Japan.



Prof.

Kazunori SUZUKI

- (Sabbatical year in 2023)
- 1 Corporate Finance, Mergers and Acquisitions
 - 2 Ph.D. in Finance (London Business School); MBA (INSEAD); LLB (University of Tokyo)
 - 3 Editorial Board Member of Security Analysts Journal, Valuation Advisor of Mizuho Bank



Prof.

Hitoshi TAKEHARA

- 1 Asset Pricing, Portfolio Management
- 2 Ph.D. in Management Science and Engineering (University of Tsukuba)
- 3 Board Member of the Nippon Finance Association and the Japan Finance Association



Assoc. Prof.

Yasukazu TAMURA

- 1 Entrepreneurship, Management Strategy
- 2 MA (Tokyo Medical & Dental University); MA (University of Tokyo); BA (Waseda University)
- 3 MEXT; Ministry of Economy, Trade and Industry, others.



Admissions Information for September 2023 Enrollment

International MBA and MSc in Finance Programs, Waseda Business School

Application Schedules

1) Application with GMAT or GRE

Application for Company-Sponsored Applicants (Only for MSc in Finance)

A rolling admissions process operates for these application channels with the four key deadlines below.

Application Round	Application Deadline	Screening Result Announcement	Enrollment Procedure Deadline
1 st Round	Oct. 31 (Mon), 2022	Dec. 8 (Thu), 2022	Jan. 13 (Fri), 2023
2 nd Round	Jan. 27 (Fri), 2023	Mar. 2 (Thu), 2023	Mar. 24 (Fri), 2023
3 rd Round	Mar. 27 (Mon), 2023	May 11 (Thu), 2023	May 26 (Fri), 2023
4 th Round	May 12 (Fri), 2023	Jun. 8 (Thu), 2023	Jun. 23 (Fri), 2023

2) Application for Family Business Successors (Only for IMBA)

This category is for applicants whose family members run their own business* and who are scheduled to succeed it in the future.

Application Round	Application Deadline	Examination Date	Screening Result Announcement	Enrollment Procedure Deadline
Spring Round	Mar. 27 (Mon), 2023	May 7 (Sun), 2023	May 11 (Thu), 2023	May 26 (Fri), 2023

*Must be a listed company on the stock exchange or of similar standing and scale

[Notes]

*Applicants may not apply to different programs (IMBA/MSc in Finance) within the same application round.

*Applicants may not apply to both the 3rd round of "Application with GMAT or GRE" and the spring round of "Application for Family Business Successors".

*Repeated applications are acceptable for those who were unsuccessful at an earlier round.

However, applicants who wish to apply again need to substantially improve the quality of their applications, such as GMAT (or GRE) score, TOEFL/TOEIC/IELTS, or other significant academic/professional achievements.

Screening Fee

Type of Application	Applicant's Domicile	Screening Fee
Application with GMAT or GRE Application for Company-Sponsored Applicant	Those who live outside of Japan	5,000 JPY
	Those who live in Japan	35,000 JPY
Application for Family Business Successors	-	35,000 JPY

Tuition & Other Fees «Fees for 2023 enrollment for international MBA & MSc in Finance»

	Entrance Fee	Tuition	Student Health Promotion Mutual Aid Association Fee	Alumni Association Membership Fee	Total
1 st Year	200,000 JPY	1,640,000 JPY	3,000 JPY	-	1,843,000 JPY
2 nd Year	-	1,840,000 JPY	3,000 JPY	40,000 JPY	1,883,000 JPY
Total					3,726,000 JPY

*The Entrance Fee is waived for those who are currently enrolled in or have graduated from, completed, or withdrawn from an undergraduate, or specialized program at Waseda University.

Financial Aid and Scholarships

1. Scholarship Prior to Matriculation

(Data for AY2022)

Type of Award	Name of Scholarship	Grants	Eligibility***
Waseda University Scholarships	Waseda University Partial Tuition-Waiver Scholarship	50% reduction in one-year tuition	-Privately-funded international students*
	Reserved Scholarship for Successful International Applicants	500,000 JPY per year (For 1 or 2 years)	-Privately-funded international students* who live outside Japan -Applications with GMAT or GRE are eligible

2. Scholarship After Matriculation

(Data for AY2022)

Type of Award	Name of Scholarship	Award Amount (Value)	Eligibility***
Government-sponsored Scholarships	Japanese Government (Monbukagakusho: MEXT) Scholarship	144,000 JPY/month and full-tuition coverage for two years of tuition	-Privately funded international students* -Students who are successful applicants in the 1st round and complete all necessary enrollment procedures by the deadline. Very few applicants passed. Not applicable for residents in Japan and there are several restrictions such as nationality, age. (Subject to change)
	Monbukagakusho Honors Scholarship	48,000 JPY/month	-Privately funded international students*
Waseda University Scholarships	Azusa Ono Memorial Scholarship (for international students)	Annual grant of 400,000 JPY	-Privately funded international students* -Students who are in their master's program within the standard years for a degree
	Okuma Memorial Scholarship	Annual grant of 400,000 JPY	-Privately-funded international students* or Japanese Students** -Students who are in their master's program within the standard years for a degree
	Waseda University Partial Tuition-Waiver Scholarship	50% reduction in one-year tuition	-Privately-funded international students*

*International students refers to those students who hold or expect to hold "Student Visa" status.

**Japanese students including those who have a Japanese "Permanent Resident, Long Term Resident, or Spouse or Child of a Japanese Citizen" visa

***Limits (such as income limit) may differ depending on scholarship.

Application Procedure Summary

1. Create a Login ID on the WBS Online Application System first, and enter all necessary information, including essays via the Online System at <https://e-apply.jp/e/wbs/>
2. Download the PDF file. Some forms will require additional information to be entered manually for completion.
3. Prepare and assemble all necessary documents, including any required certificates and recommendation letters.
4. Pay the screening fee.
5. Send all specified documents to the WBS Admissions Office by postal mail.

Your application will be considered complete when all required documents are received by the WBS Admissions Office no later than the deadline for each application round.

For more information

<https://www.waseda.jp/fcom/wbs/en>
E-mail: wbs-admissions@list.waseda.jp

Website
and
Application Guide





Waseda Business School
(Graduate School of Business and Finance)



3rd Floor, Building 11, Waseda Campus
1-6-1 Nishi-Waseda, Shinjuku-ku, Tokyo, 169-8050, Japan
E-mail: wbs-admissions@list.waseda.jp

<https://www.waseda.jp/fcom/wbs/en>