

SUMMARY

Strategic expressions: few

HLS: language switches

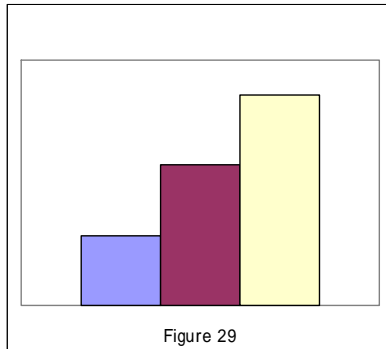
MLS: topic avoidance
other strategies

No significant
difference

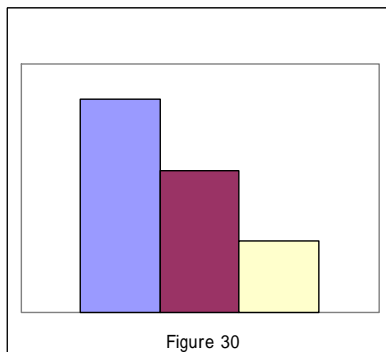
Substantial difference

NS: rarely use communication strategies

Conclusion (1)

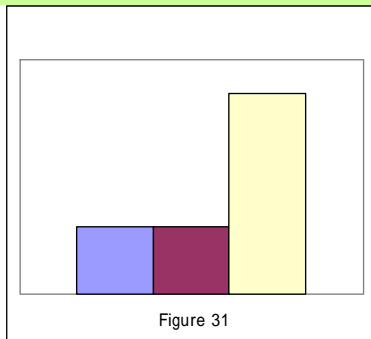


- 1) Total number of words
- 2) Number of words spoken for the subordinate topic
- 3) Number of words following the given topic

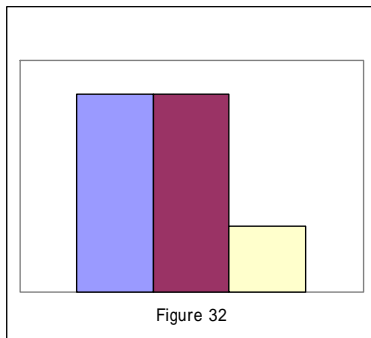


- 1) Turn-taking
- 2) Body language
- 3) Hesitation

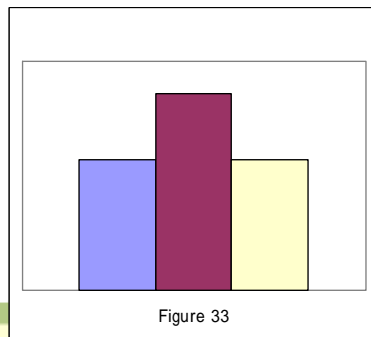
Conclusion (2)



- 1) Number of non-textbook words
- 2) Complex sentences



- 1) Sociolinguistic competence
- 2) Strategic competence



- 1) Shorter segments
- 2) Reactive tokens