

Wireless LAN (macOS 10.7-10.13)

Alumni (graduates) will not be able to connect to the intra-university networks.

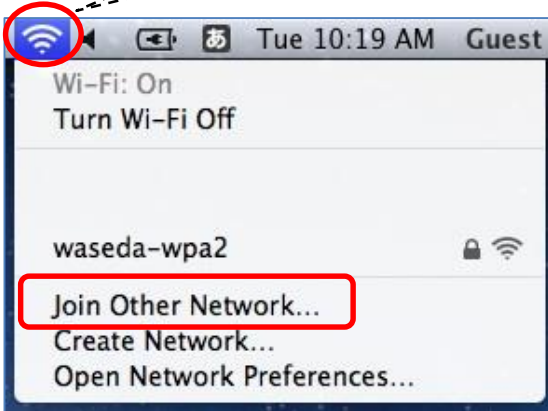
INDEX

- I. Network Settings **1~3**
- II. Daily Use **4**
- III. Delete Network Setting **5~7**
(User Name and Password)

I . Network Settings

1

- (1) Click Wi-Fi icon on menu bar.
- (2) Select Join Other Network.



- (1) Network Name is **waseda-wpa2**
- (2) Select WPA2 Enterprise in Security.
- (3) If Mode is here, select Auto.
- (4) Enter your Waseda ID or Waseda mail address and the password.
- (5) Click Join.

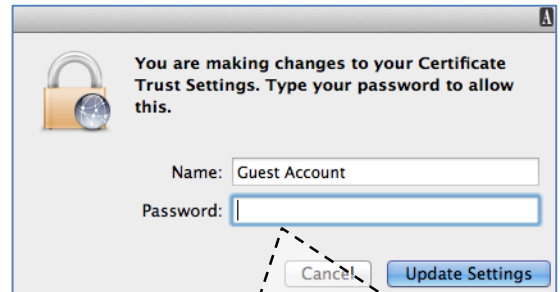
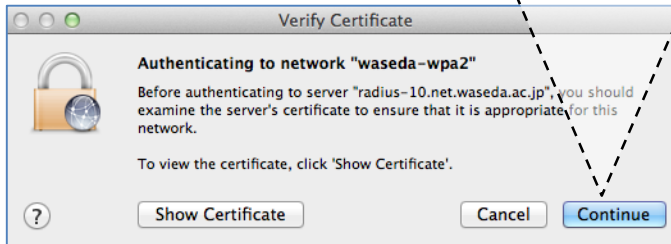
2



I . Network Settings

3

If Verify Certificate window appears, click Continue.



If this window appears, enter your username of Mac and the login password and click Update Settings.

- If cannot open web page, restart Safari or Mac.
- You can you check the location on IT service NAVI site.
http://www.waseda.jp/navi/e/network/wireless_new.html

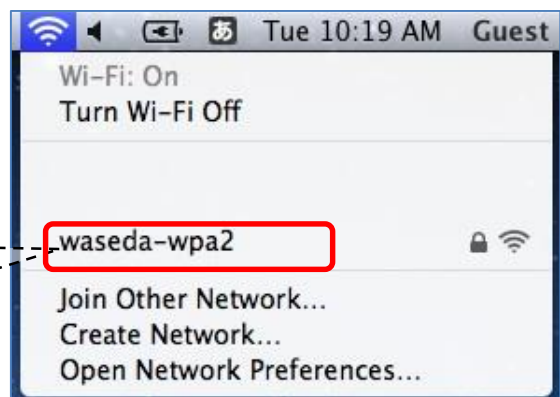
Tech Info

- Network connections are restricted to some ports for security reason. So you may not use some software like messenger, mail client. If you want to use it, you have to use general purpose proxy. See <http://www.waseda.jp/navi/e/network/general-proxy.html>

II . Daily Use

4

Next time you use Wi-Fi, click Wi-Fi icon and select waseda-wpa2.

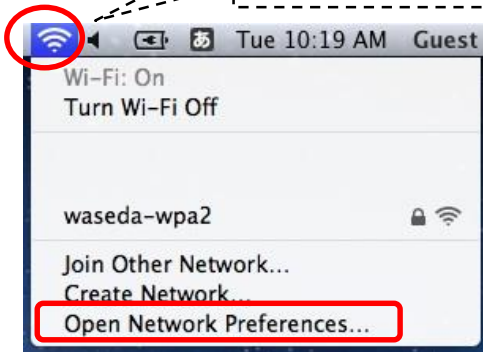


III. Delete Network Setting

Describes how to delete the wireless LAN network setting (User Name and Password) from your PC.

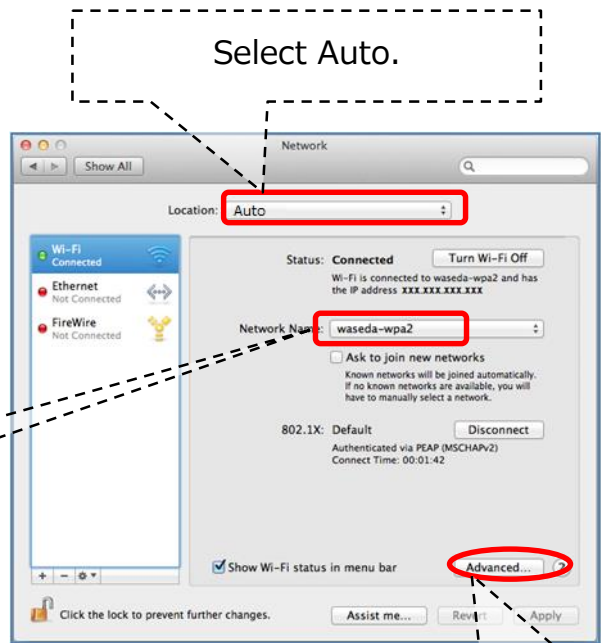
5

- (1) Click Wi-Fi icon on menu bar.
- (2) Select Open Network Preferences.



6

Select waseda-wpa2.

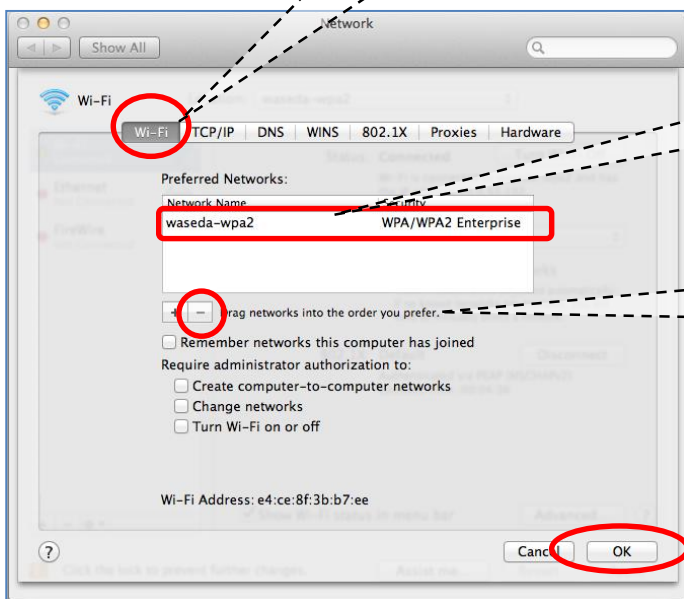


Select Auto.

Click Advanced.

7

Click Wi-Fi.



Select waseda-wpa2.

- (1) Click "-".
- (2) Click OK.

Waseda-wpa2 will be removed from the list.

How to use Wireless LAN (macOS 10.7-10.13)